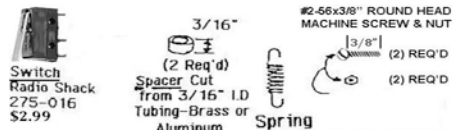


# SQUAREBIRD REPAIR TIPS

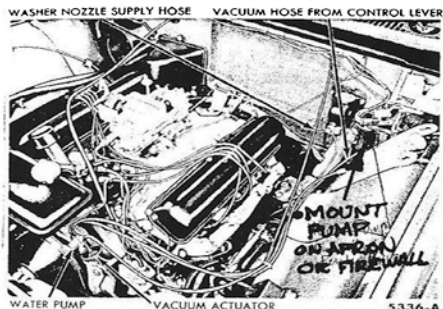
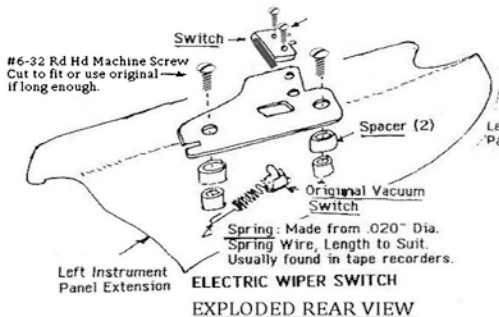
Submitted by Daniel J. Tyrpak



The windshield washer switch is mounted on the left end of the instrument panel. To replace the switch, a section of the panel is removed by taking out three screws. The switch is fastened to the panel by two screws.



## ITEMS NEEDED



## —Windshield Washer Installation

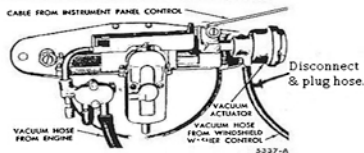
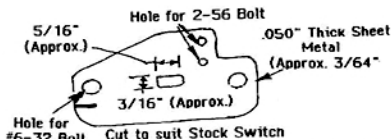
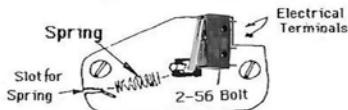


FIG. 26—Windshield Wiper Actuator

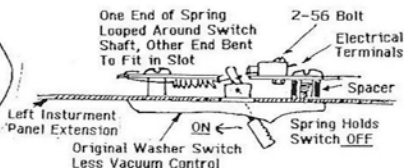
# CONVERSION OF WINDSHIELD WASHER FROM VACUUM TO ELECTRIC (without altering appearance of the original switch)



## SWITCH MOUNTING PLATE



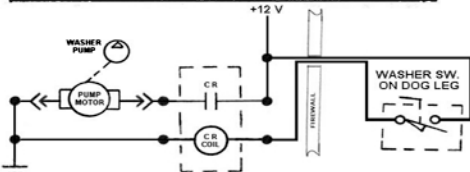
## ASSEMBLED VIEW—TOP



## ASSEMBLED VIEW—SECTION



## ELECTRIC WASHER PUMP INSTALLATION



MICRO SWITCHES DON'T CARRY MUCH CURRENT SO I ALWAYS INSTALL A RELAY (LIKE MODERN CARS USE). YOUR MICRO SWITCH CAN BE FROM A COMPUTER MOUSE OR FROM RADIO SHACK, OR IT COULD BE A PUSH-BUTTON. IF YOU INSTALL A RELAY, IT'S SAFE TO USE ANY SWITCH.

NOTICE THE PUMP MOTOR HAS A PLUG & RECEPTACLE. JUST ABOUT ANY RESERVOIR/PUMP ASSEMBLY WILL WORK JUST FINE, BUT TRY TO GET THE CONNECTORS WITH IT.

POWER CAN COME FROM THE BATTERY OR FROM ANY POWER SOURCE THAT IS ON WITH THE KEY. I LIKE USING THE SAME WIRE THE ELECTRIC WIPERS ARE FED WITH. THAT WAY THEY ARE ON THE SAME FUSE.

IF YOU ORIGINALLY HAD A VACUUM HOSE, USE IT TO PULL YOUR WIRES THROUGH THE FIREWALL.