

3/16" steel plate. (Fig. 2). Position the plate in a vise and file the hole to .722/.727" diameter. The mounting bolt should fit snugly in the plate hole.

11. Position the plate on the outboard side of the side rail and install the mounting bolt finger tight to position the plate on the side rail.

12. Weld the plate to the side rail on the top, rear, and bottom sides. Clean the welded areas.

13. Install the rear axle upper suspension arm using a hardened steel flat washer (372150-S) (Class S Merchandise Code 510) on each side of the arm forward bushing. Use lockwasher (34853-S7) under each forward bolt. Torque the forward mounting bolt to 100-120 ft. lbs. Torque the rear mounting bolt to 65-75 ft. lbs.

2. Stripped Threads on the Upper Suspension Arm Front Mounting Nut.

1. Remove the rear seat cushion and rear seat back assemblies, and then locate and drill a 1 1/2" diameter hole as shown in Fig. 3.

2. Raise the rear of the car and remove the rear tire and wheel assemblies. Then, remove the bolt from the forward upper arm bushing.

3. Drill through the existing nut with a 1/4" drill, split the nut with a chisel, and remove it from the underbody rail. The pieces of the nut can be removed from the spring pocket area with a magnet.

4. Assemble the front bushing and bolt assembly, discard the star-type lockwasher and substitute a spring-type 3/4" lockwasher.

5. Grind or file the weld flash from the inboard side of the underbody rail, and place a 5/8" - 18 nut in the access hole.

6. Tighten the bolt to secure the nut, and then arc weld the nut to the side rail.

7. Torque the bolt to 100-120 ft. lbs.

8. Install a grommet (352285-S) in the drilled access hole, and install the seat back and seat cushion assemblies.

9. Install the wheel and tire assembly.

3. Upper Suspension Arm Front Nut Loose.

1. Remove the rear seat cushion and rear seat back assemblies, and then locate and drill a 1 1/2" diameter hole as shown in Fig. 3.

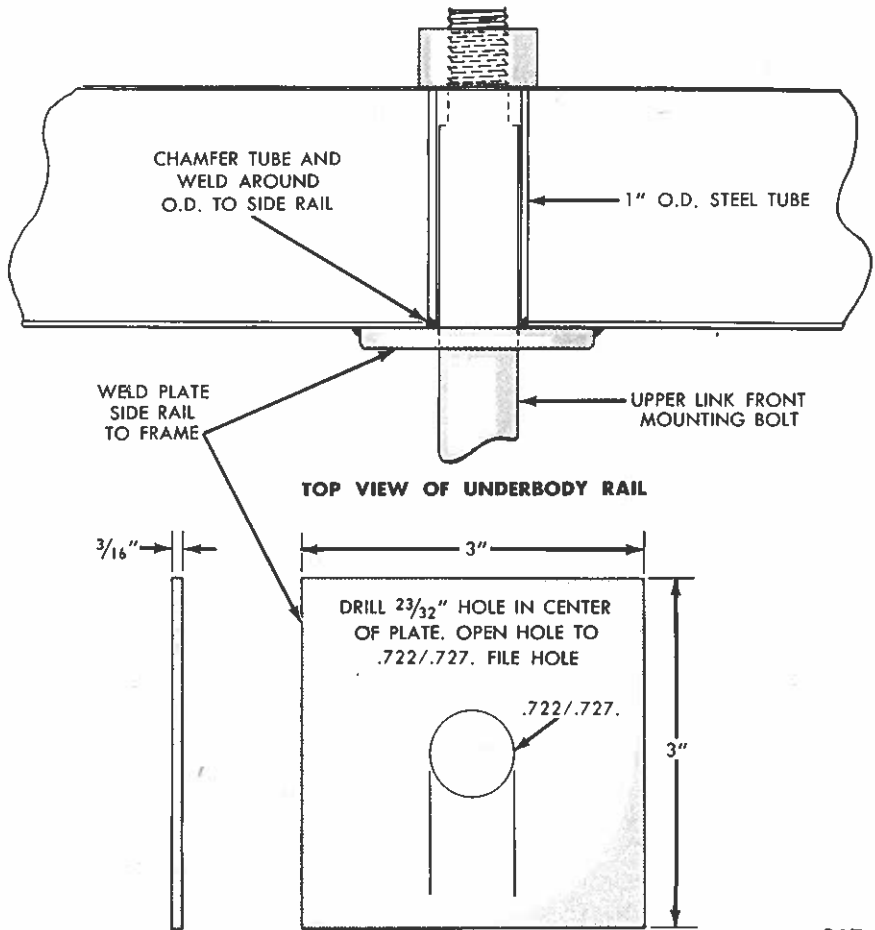
2. Raise the car and remove the rear tire and wheel assemblies.

3. Tighten the bolt to secure the nut, and then arc weld the nut to the side rail.

4. Torque the bolt to 100-120 ft. lbs.

5. Install a grommet (352285-S) in the drilled access hole, and install the seat back and seat cushion assemblies.

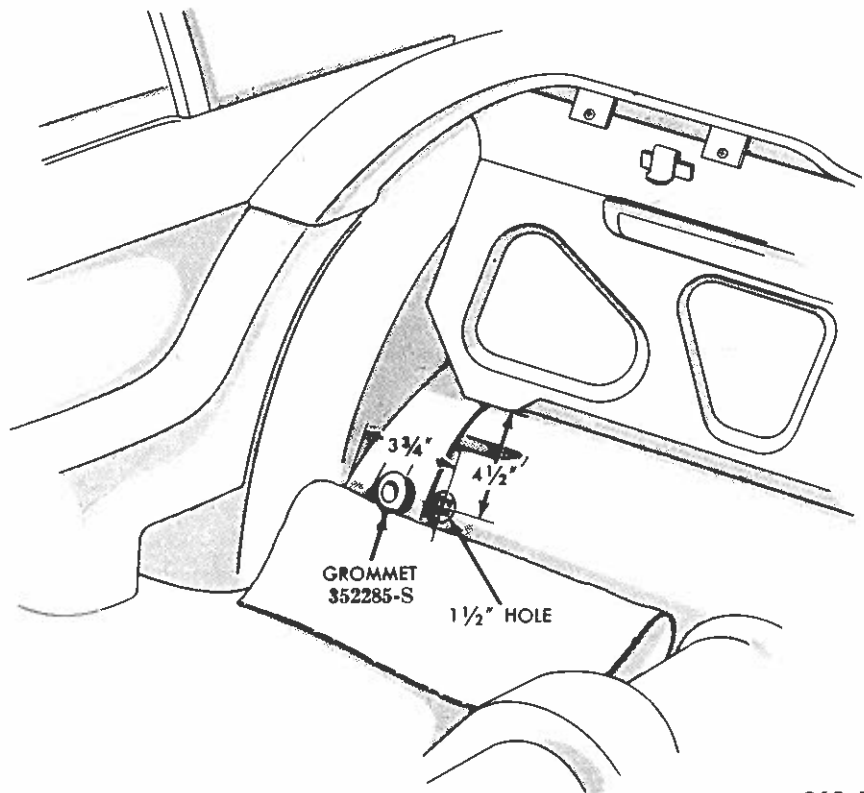
6. Install the wheel and tire assembly.



TOP VIEW OF UNDERBODY RAIL

267-A

Fig. 2 - Side Rail Plate



260-A

Fig. 3 - Fix For Stripped Threads or Loose Nut