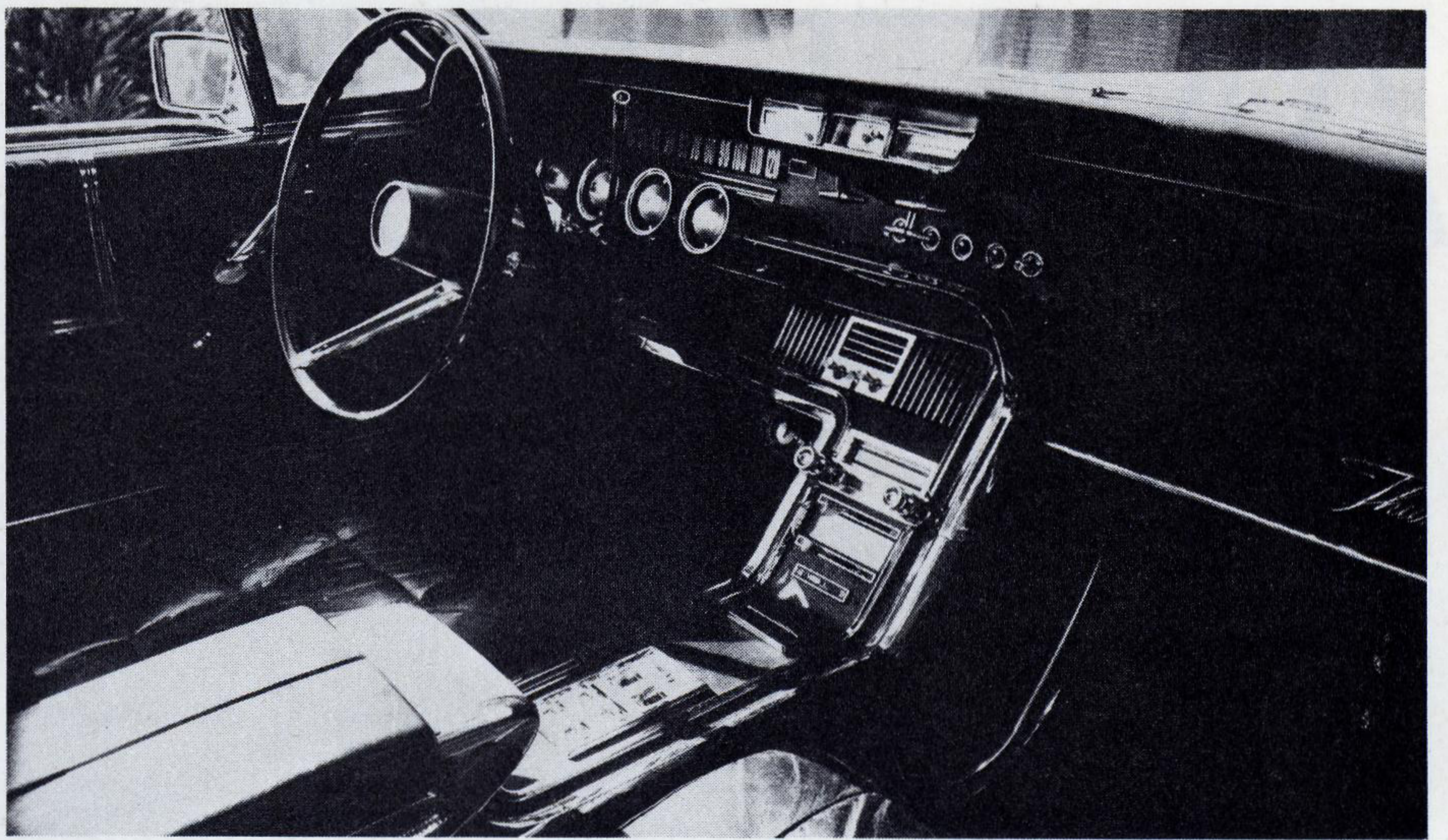
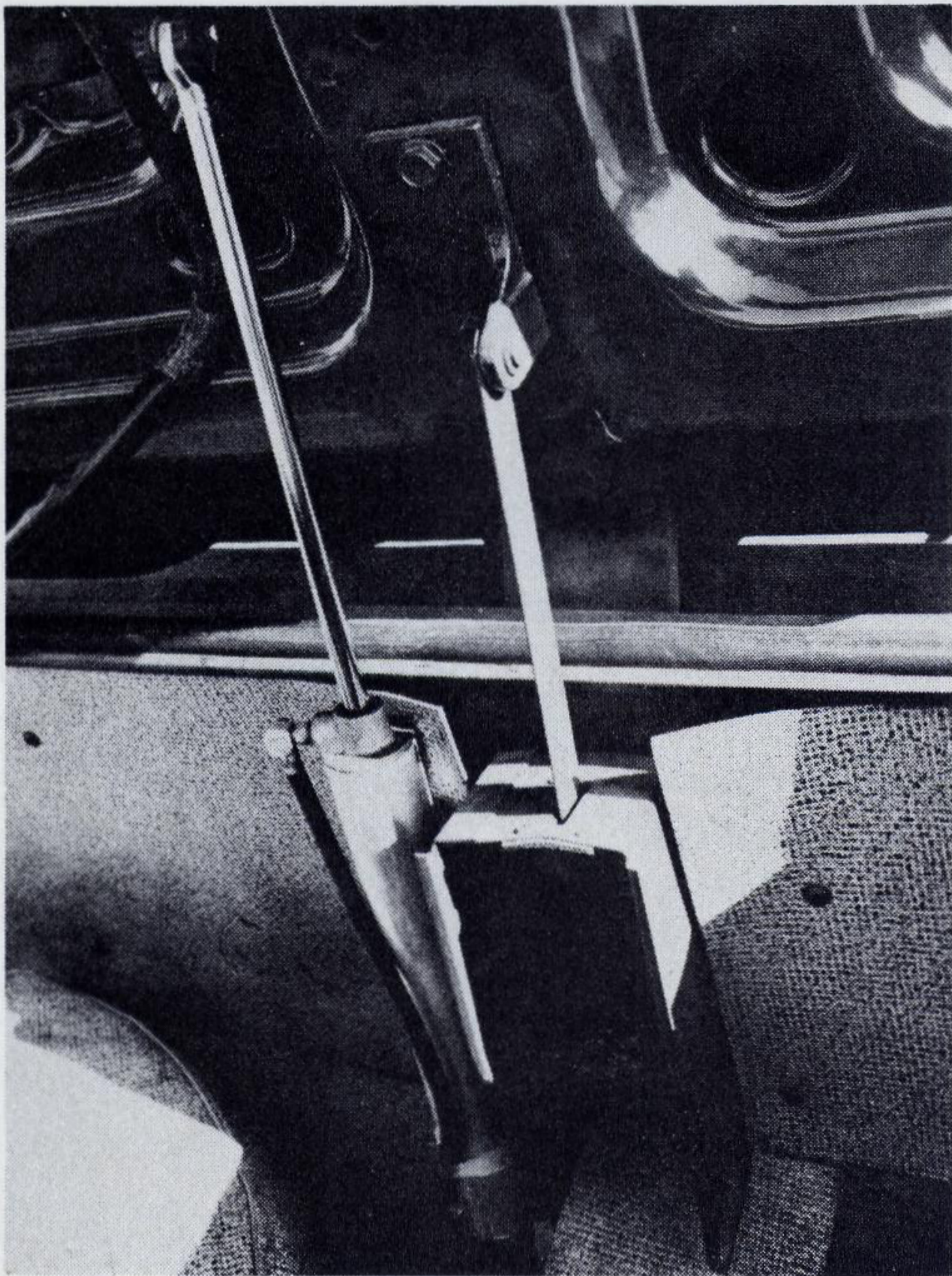


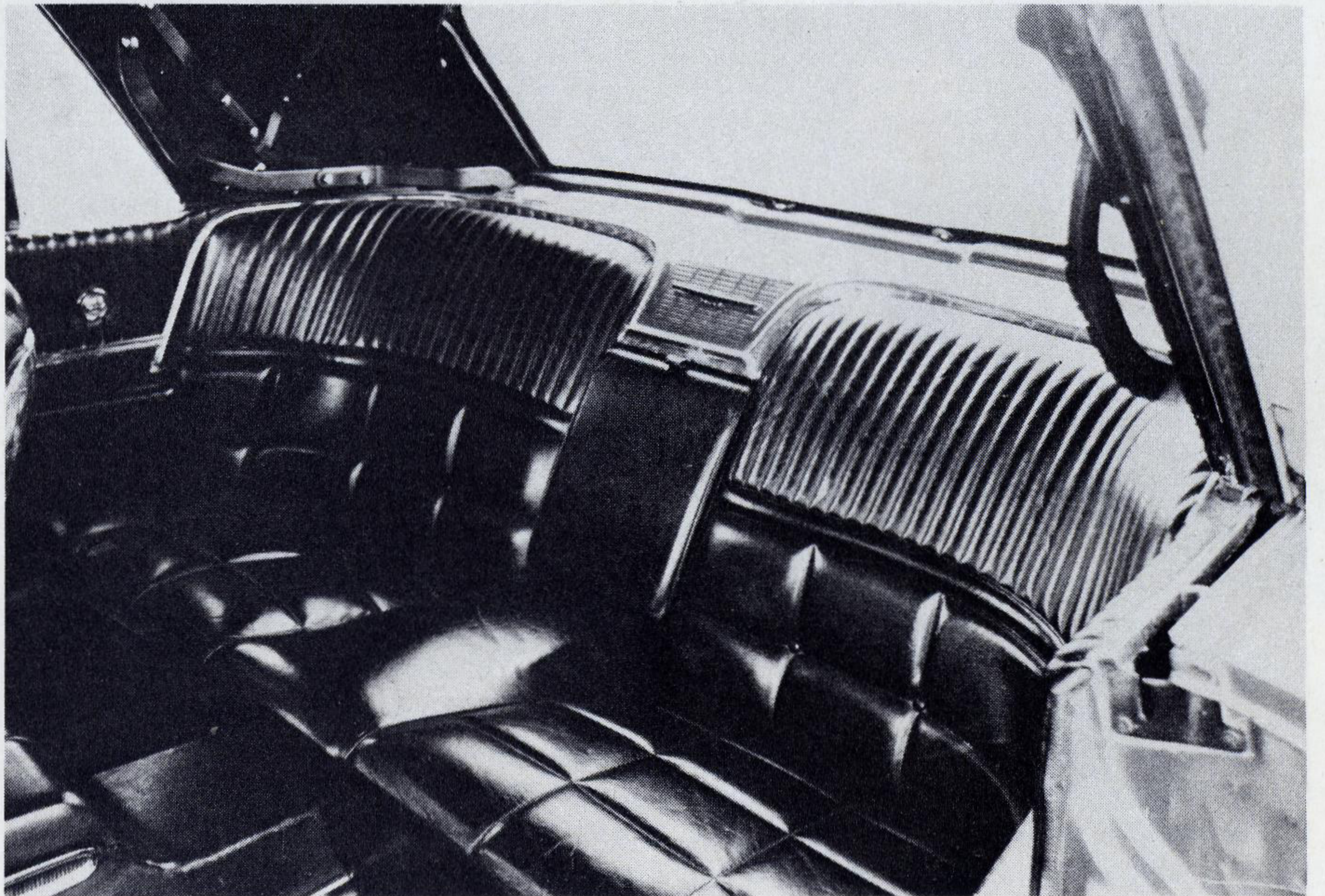
*THUNDERBIRD LOOK — The driver could look back on traffic with this special Thunderbird mirror.*



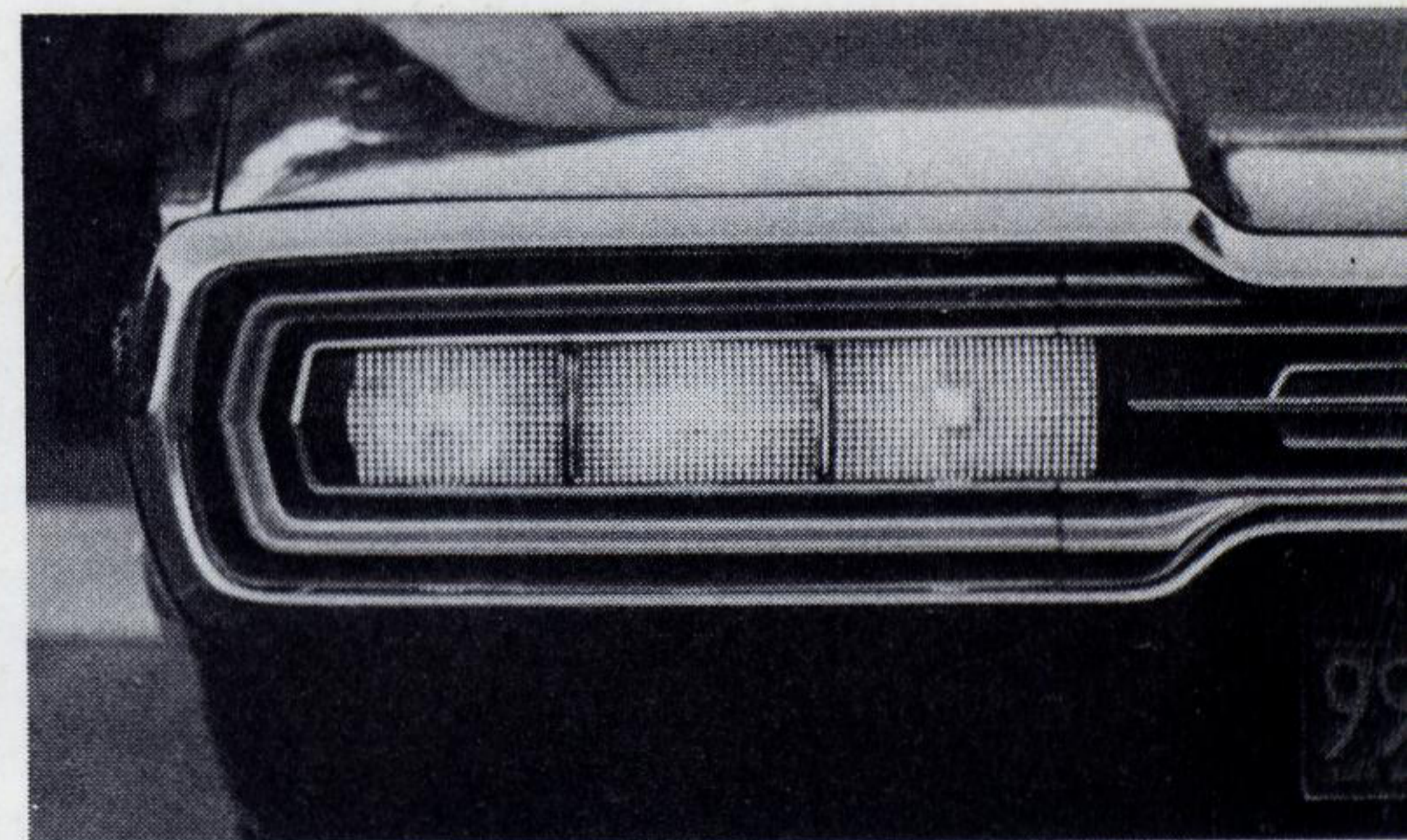
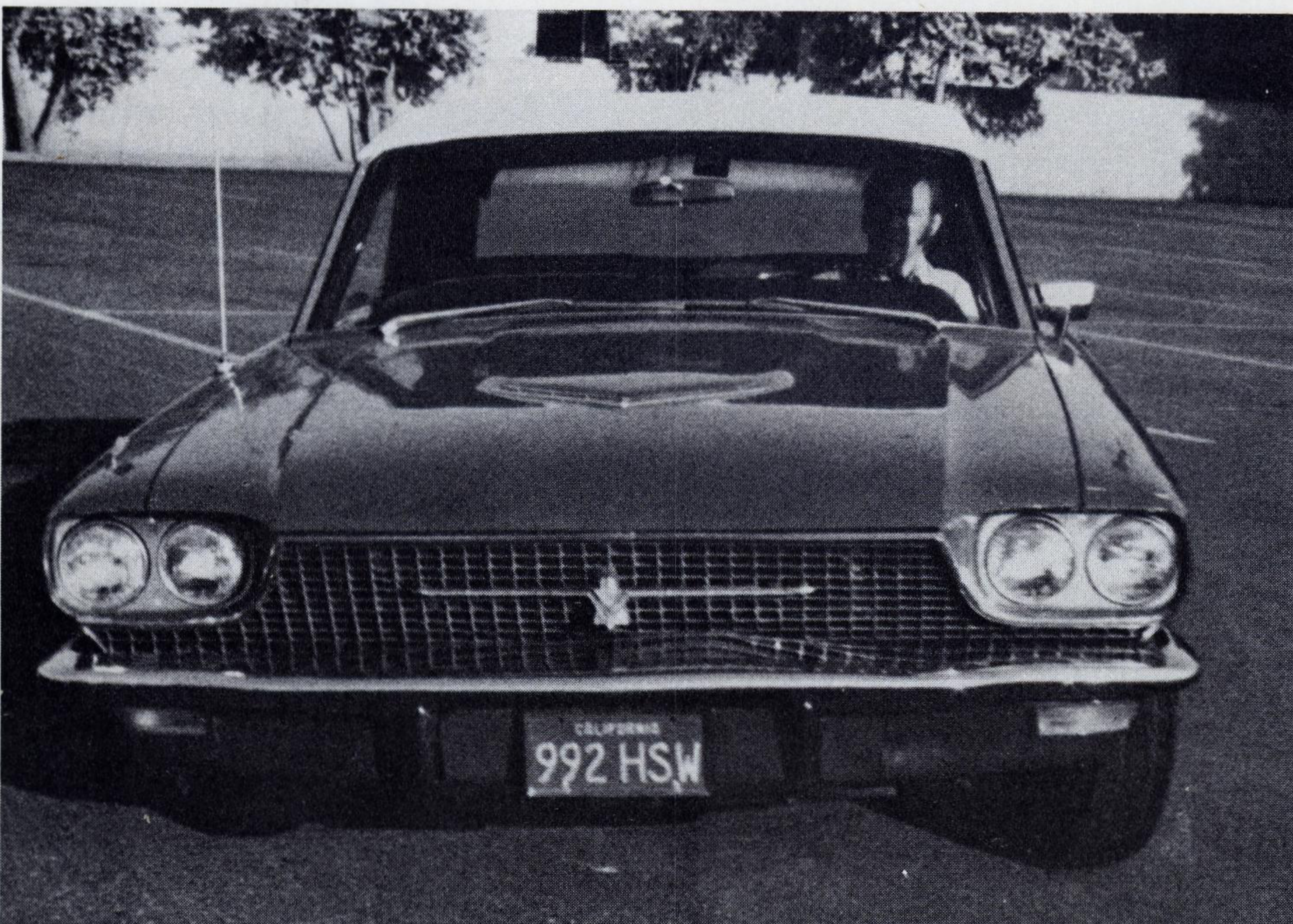
*PASSENGER VIEW — The cockpit of the 1966 car looks like this when viewed from the passenger side.*



*HYDRAULIC RAMS — The rear deck and parts of the top are operated by hydraulic rams such as these.*



*REAR SEAT — The pleated leather seats and chrome trim divider can be seen.*



*FAMOUS LIGHTS — As can be seen in this sequence of flashing tail light photos, the 1966 Thunderbird had one of the most distinctive turn signals ever devised for an automobile. This same bank of lights also doubled as brake and tail lights.*

*HARD CORNER — The Thunderbird Illustrated team tries the car out in a hard corner.*