

INDEX

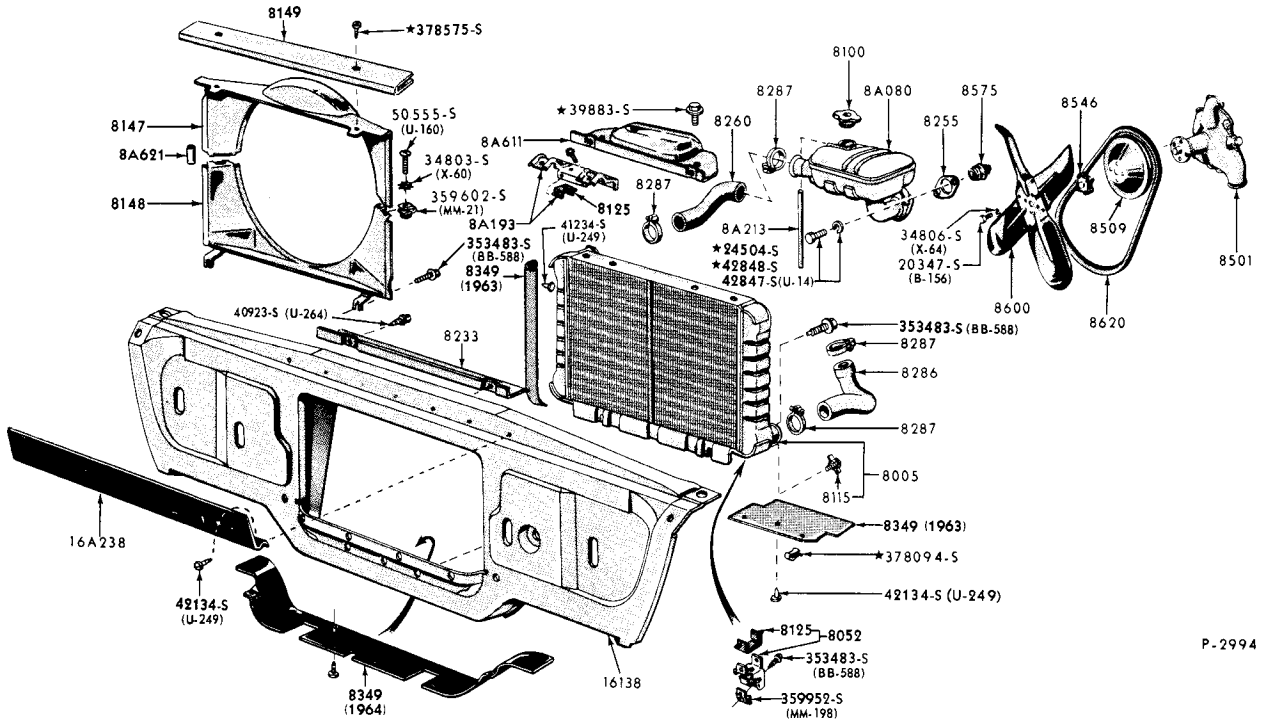
BELOW IS A LIST OF THE MAJOR GROUPS and THE ORDER IN WHICH THEY ARE LISTED IN THIS INDEX.

COOLING SYSTEMS

RADIATOR GRILLE AND RELATED PARTS

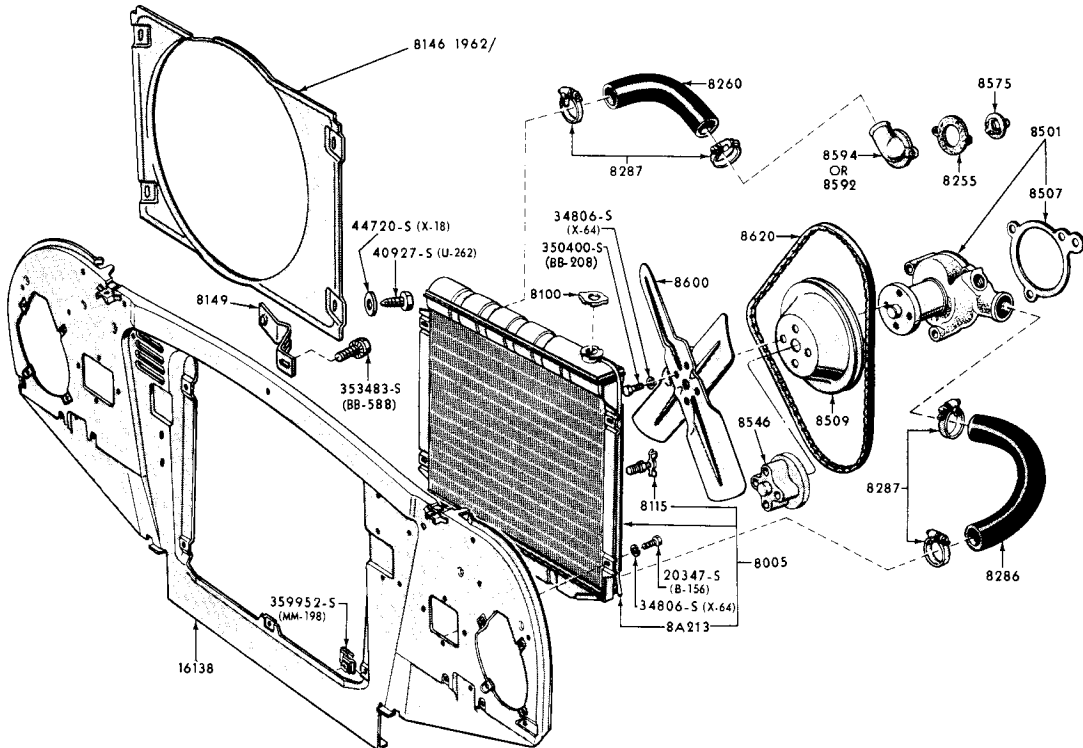
WATER PUMPS

YEAR	TITLE	ILLUS. NO.	SECTION	PAGE
COOLING SYSTEMS				
- A -				
1960/63	Cooling System (Ford-Custom & Galaxie)-6 cyl. 223	P-2993	80	268
1960/64	Cooling System (Ford-Custom & Galaxie)-8 cyl. 292, 352, 390, 406, 427 -Typical	P-2994	80	269
1963	Cooling System (Ford-Custom & Galaxie)-8 cyl. 260, 289	P-4159	80	271
1964	Cooling System (Ford-Custom & Galaxie)-6 cyl. 223 & 8 cyl. 289	P-4159	80	271
- B -				
1962/	Cooling System (Fairlane/Torino)-6 cyl. 170, 200 & 8 cyl. 221, 260, 289	P-3723	80	270
- S -				
1960	Cooling System (Thunderbird)-8 cyl. 352, 430	P-2657	80	268
1961/	Cooling System (Thunderbird) -8 cyl. 390	P-3400	80	271
- X -				
1960/	Cooling System (Falcon)-6 cyl. 144, 170, 200 & 8 cyl. 260, 289	P-3147	80	269
RADIATOR GRILLE and RELATED PARTS				
- A -				
1960	Ford	P-2952-2	82	272
1961/62	Ford	P-3220-2	82	275
1963	Ford	P-3934-2	82	280
1964	Ford	P-4221-2	82	282
- B -				
1962	Fairlane	P-3720-2	82	278
1963/64	Fairlane	P-3926-2	82	281
- S -				
1960	Thunderbird	P-2997-2	82	273
1961/63	Thunderbird	P-3249-2	82	276
1964/	Thunderbird	P-4212-2	82	283
- X -				
1960	Falcon	P-3105-2	82	274
1961	Falcon	P-3283-2	82	277
1962/63	Falcon	P-3648-2	82	279
1964	Falcon	P-4206-2	82	284
WATER PUMPS				
6 CYLINDER ENGINES				
1960/64	Water Pump (6 cyl. 223)-typical	P-2230	85	285
1960/	Water Pump (6 cyl. 144, 170, 200)	P-2962	85	285
8 CYLINDER ENGINES				
1960/62	Water Pump (8 cyl. 292)-typical	P-1611	85	286
1960	Water Pump (8 cyl. 430)	P-2833	85	286
1960/	Water Pump (8 cyl. 352, 390, 406, 427)	P-2491	85	287
1962/	Water Pump without cover (8 cyl. 221, 260, 289)	P-3772	85	287



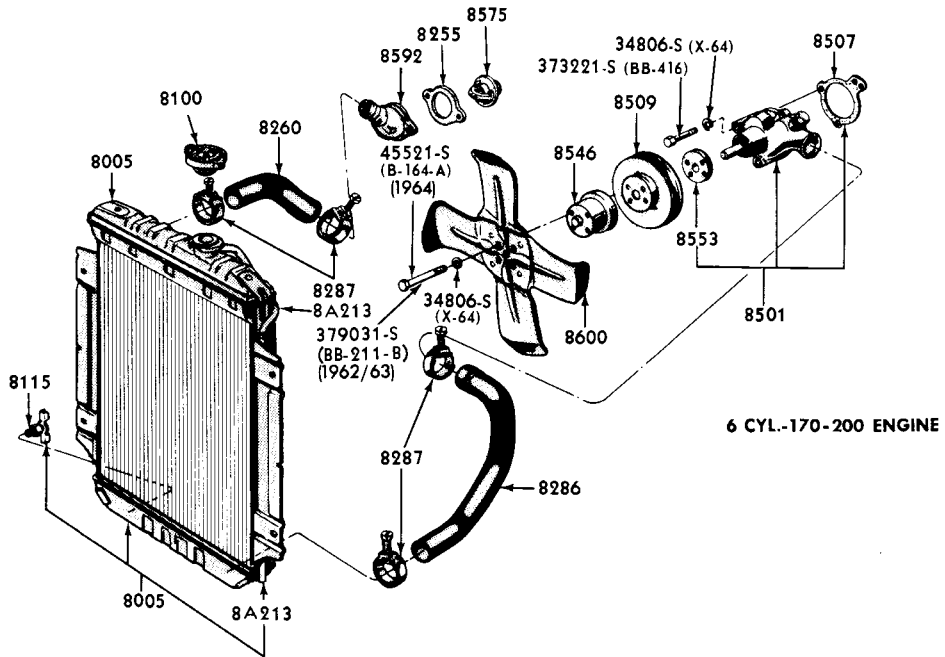
P-2994

1960/64 COOLING SYSTEM (FORD-CUSTOM & GALAXIE)-8 CYL. 292, 352, 390, 406, 427-TYPICAL

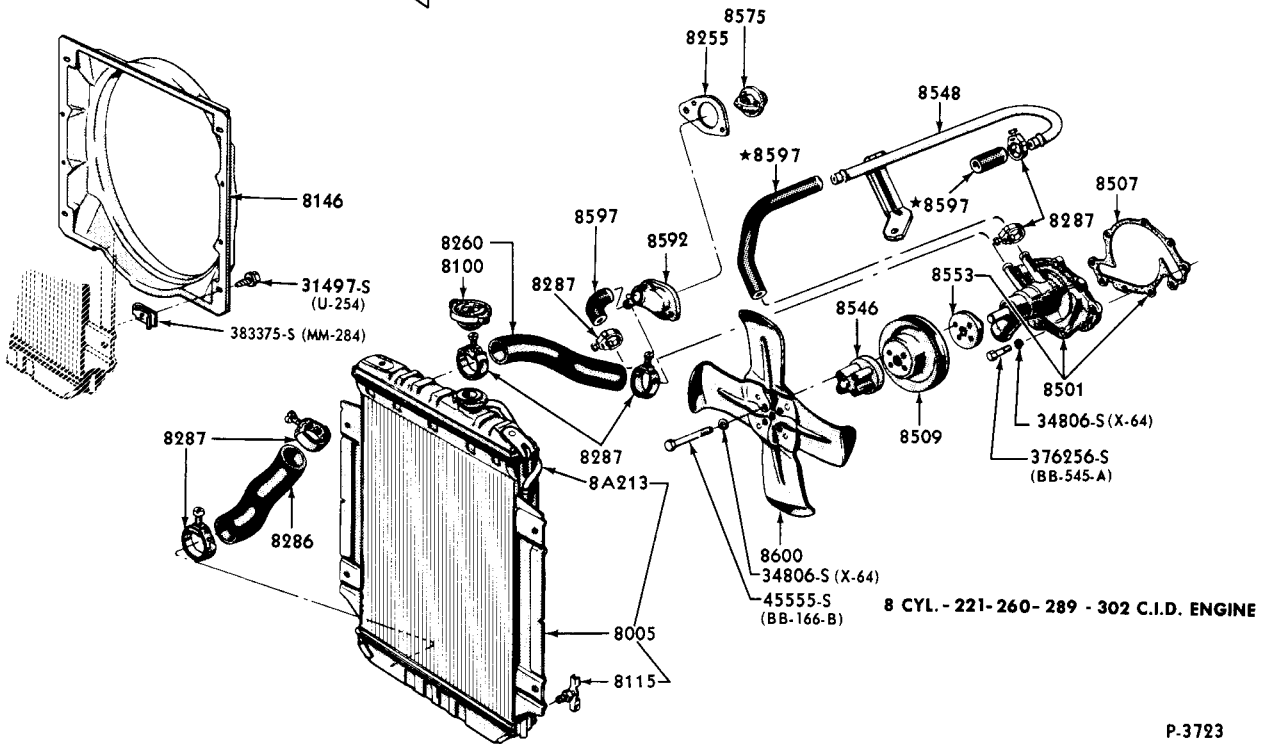


P-3147

1960/ COOLING SYSTEM (FALCON)-6 CYL. 144, 170, 200 & 8 CYL. 260, 289

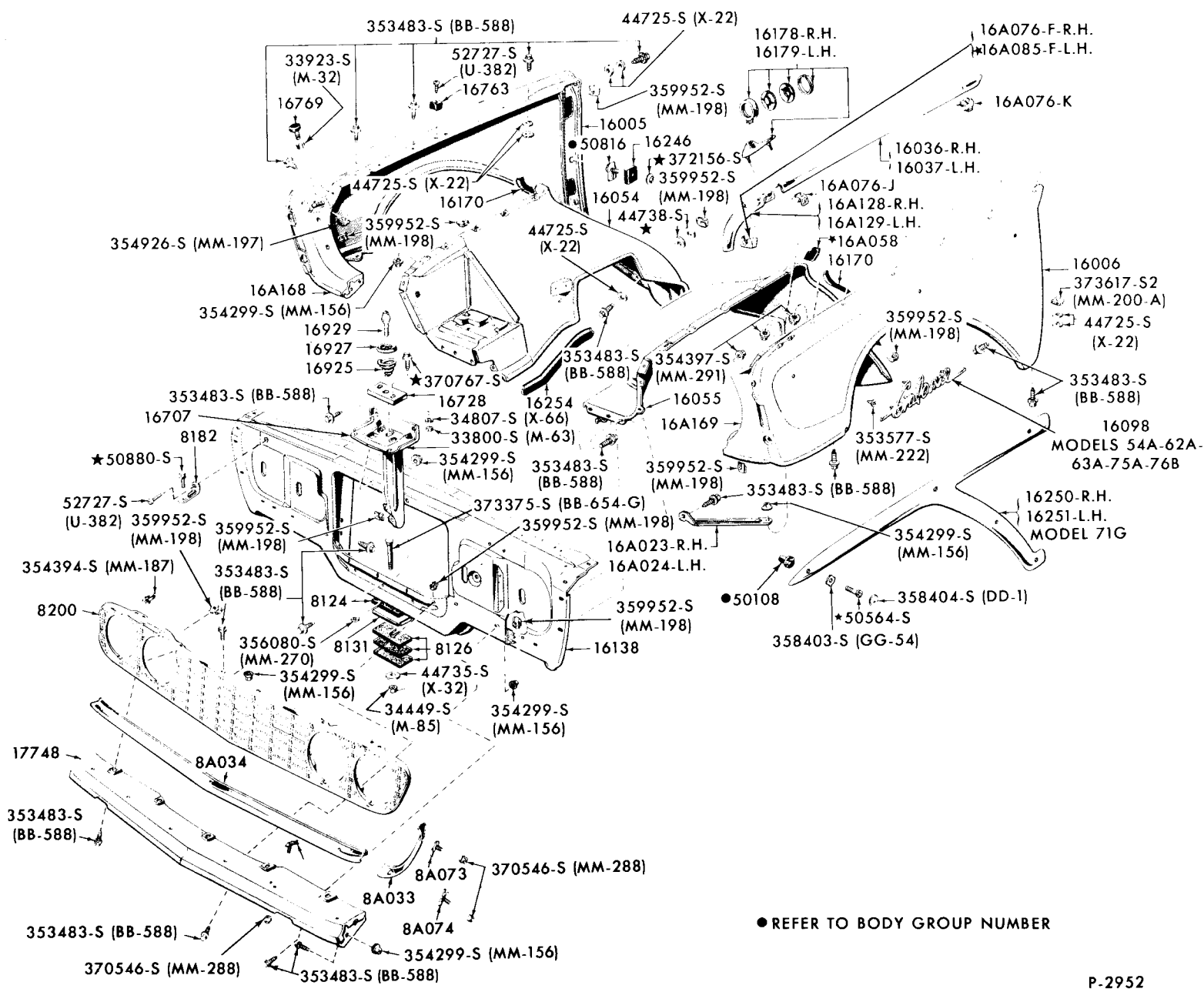


6 CYL.-170-200 ENGINE



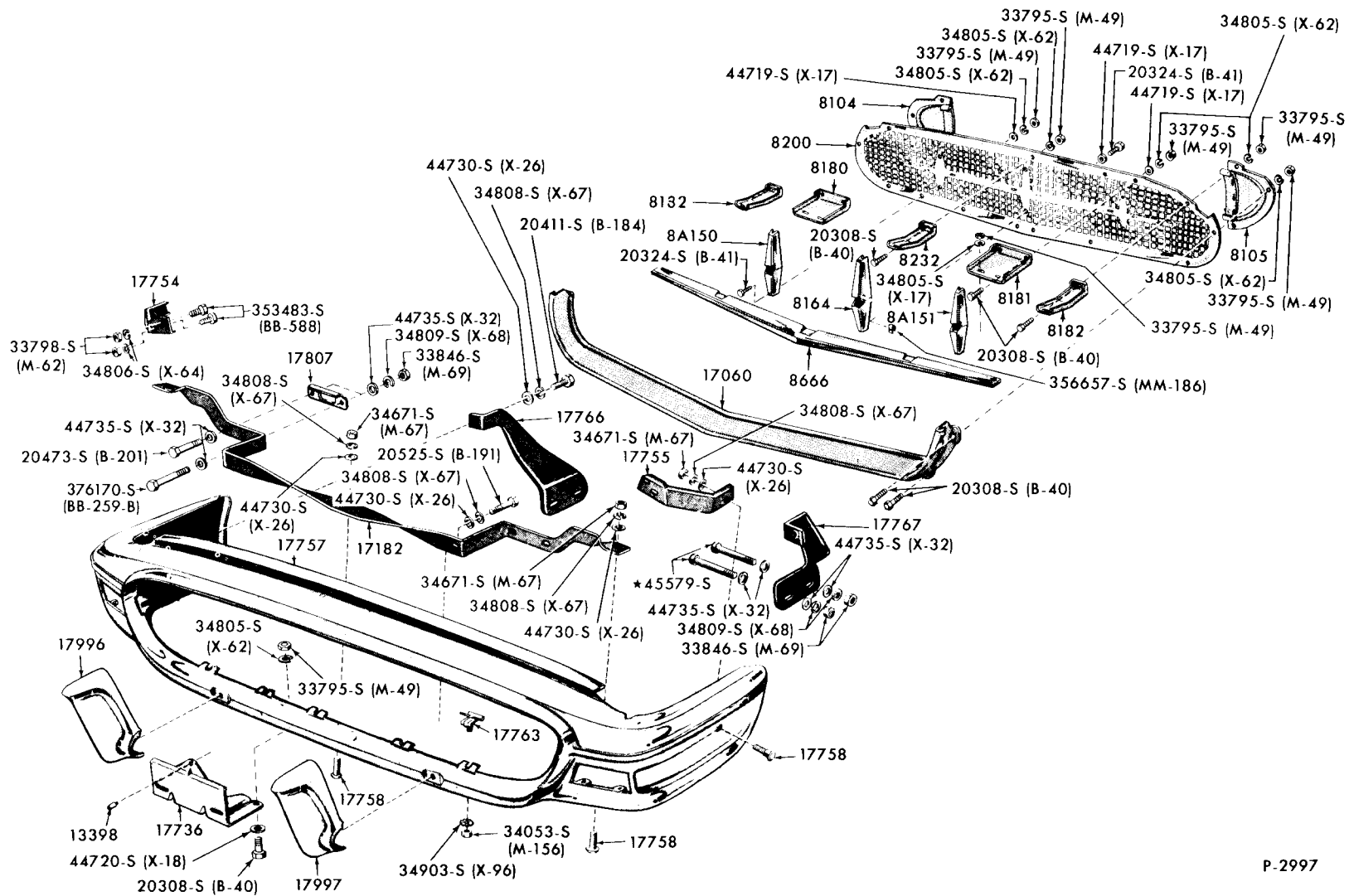
8 CYL. - 221-260-289 - 302 C.I.D. ENGINE

RADIATOR GRILLE, FENDERS, MOUNDINGS and RELATED PARTS
(1960 FORD)



● REFER TO BODY GROUP NUMBER

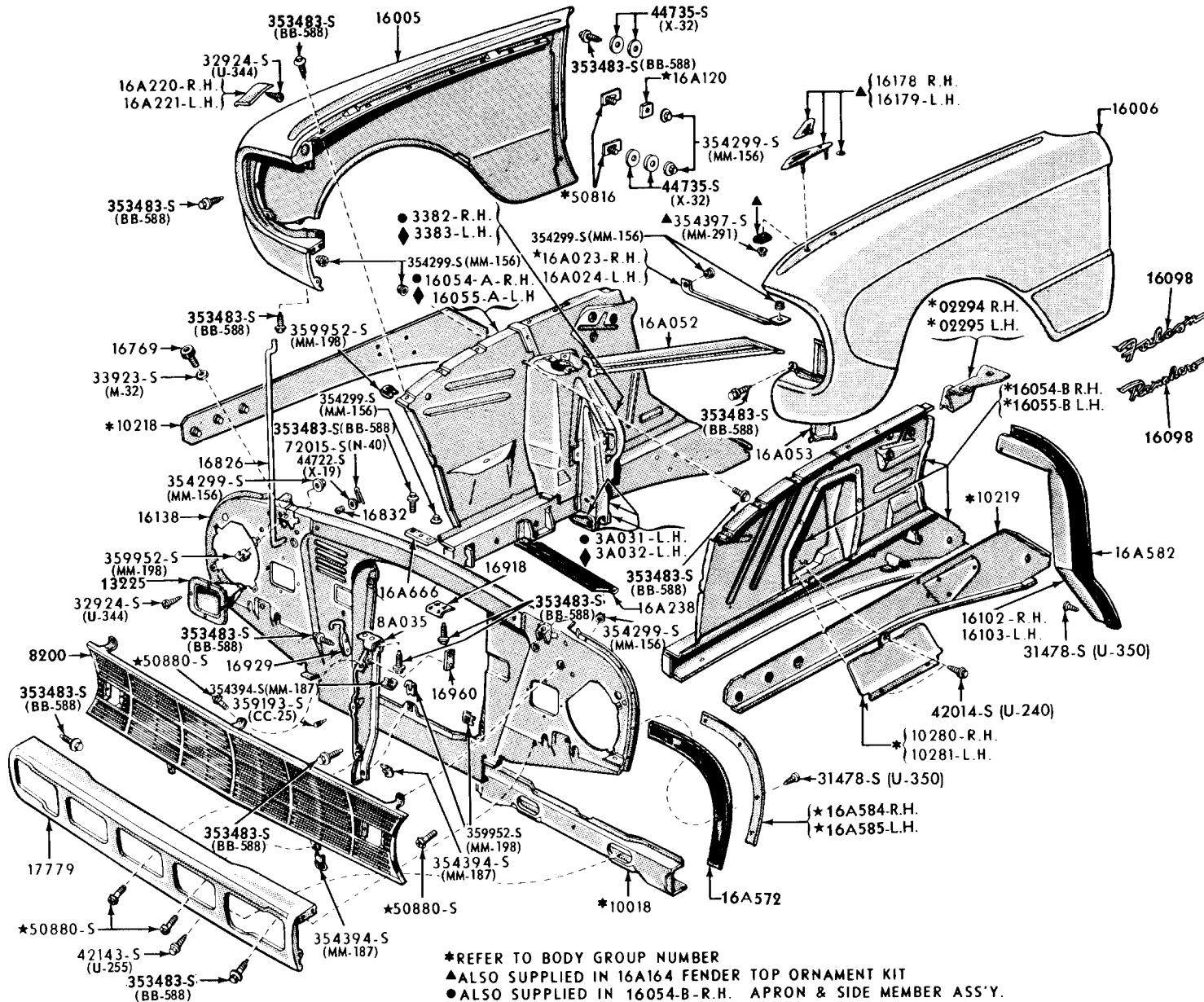
RADIATOR GRILLE, FRONT BUMPER and RELATED PARTS
(1960 THUNDERBIRD)



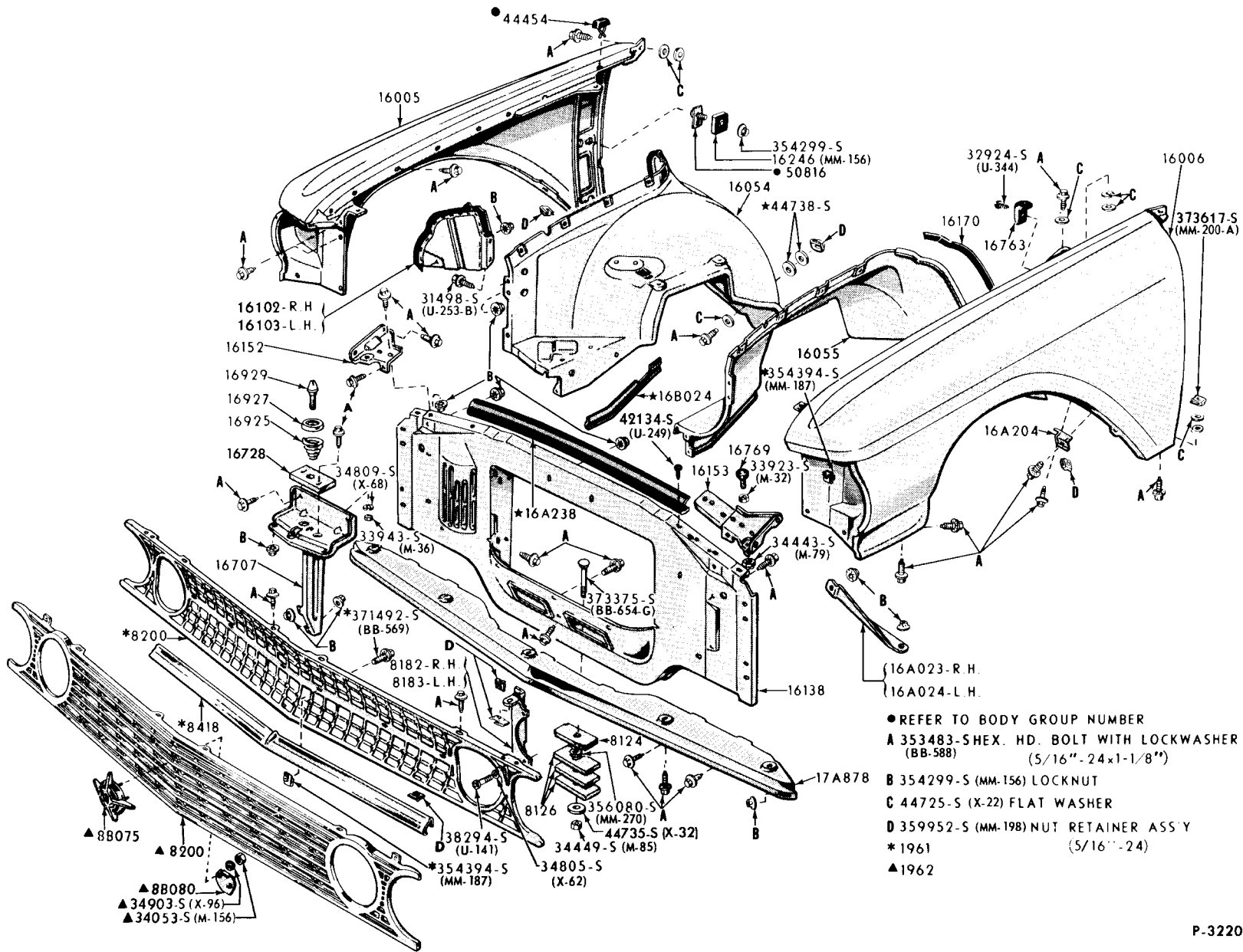
FORD CAR PARTS

ILLUSTRATION SECTION 82

P-2997

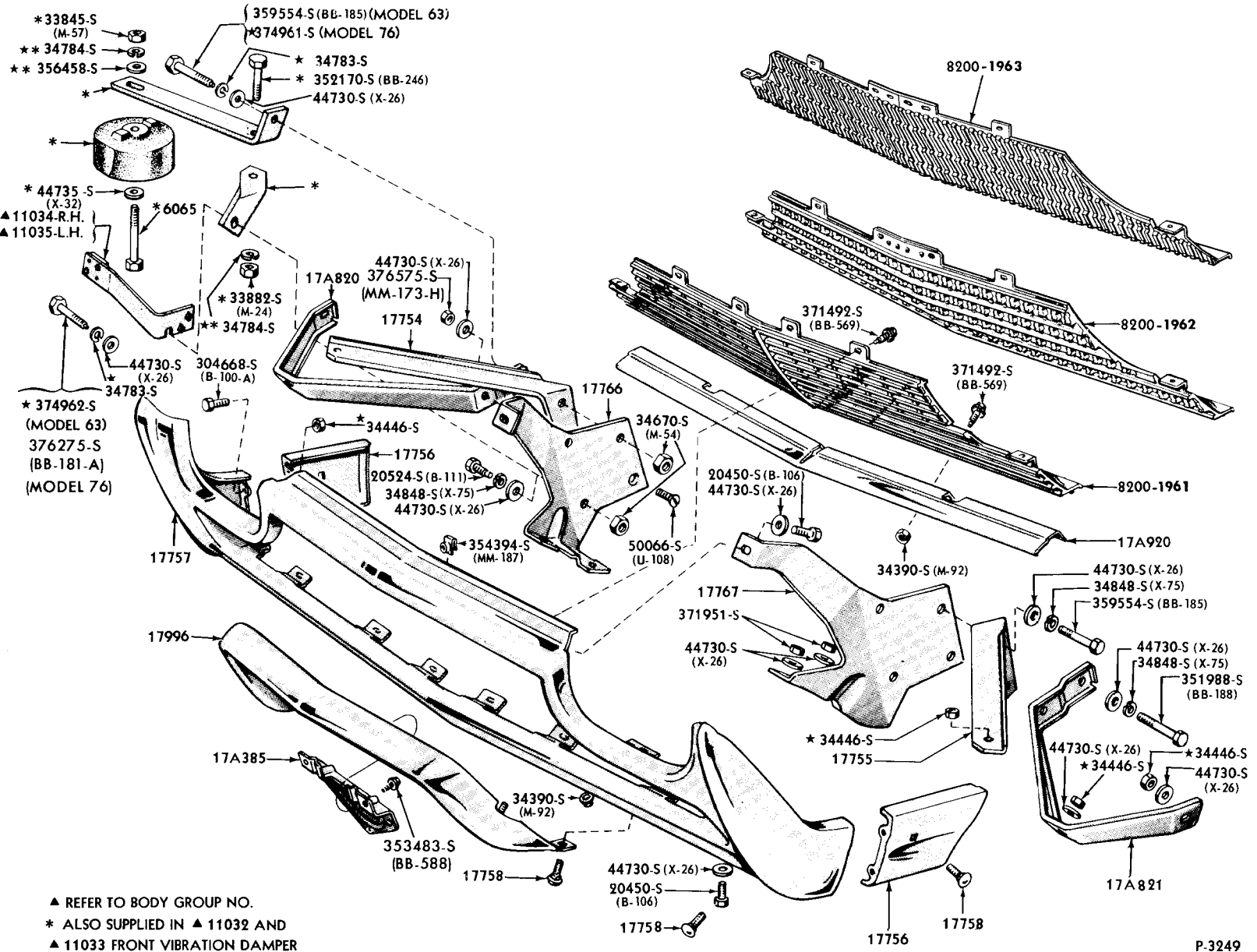
RADIATOR GRILLE, FENDERS and RELATED PARTS
(1960 FALCON)

RADIATOR GRILLE, FENDERS and RELATED PARTS
(1961/62 FORD)



- REFER TO BODY GROUP NUMBER
- A 353483-SHEX. HD. BOLT WITH LOCKWASHER (BB-588) (5/16" - 24x1-1/8")
- B 354299-S (MM-156) LOCKNUT
- C 44725-S (X-22) FLAT WASHER
- D 359952-S (MM-198) NUT RETAINER ASSY (5/16" - 24)
- * 1961
- ▲ 1962

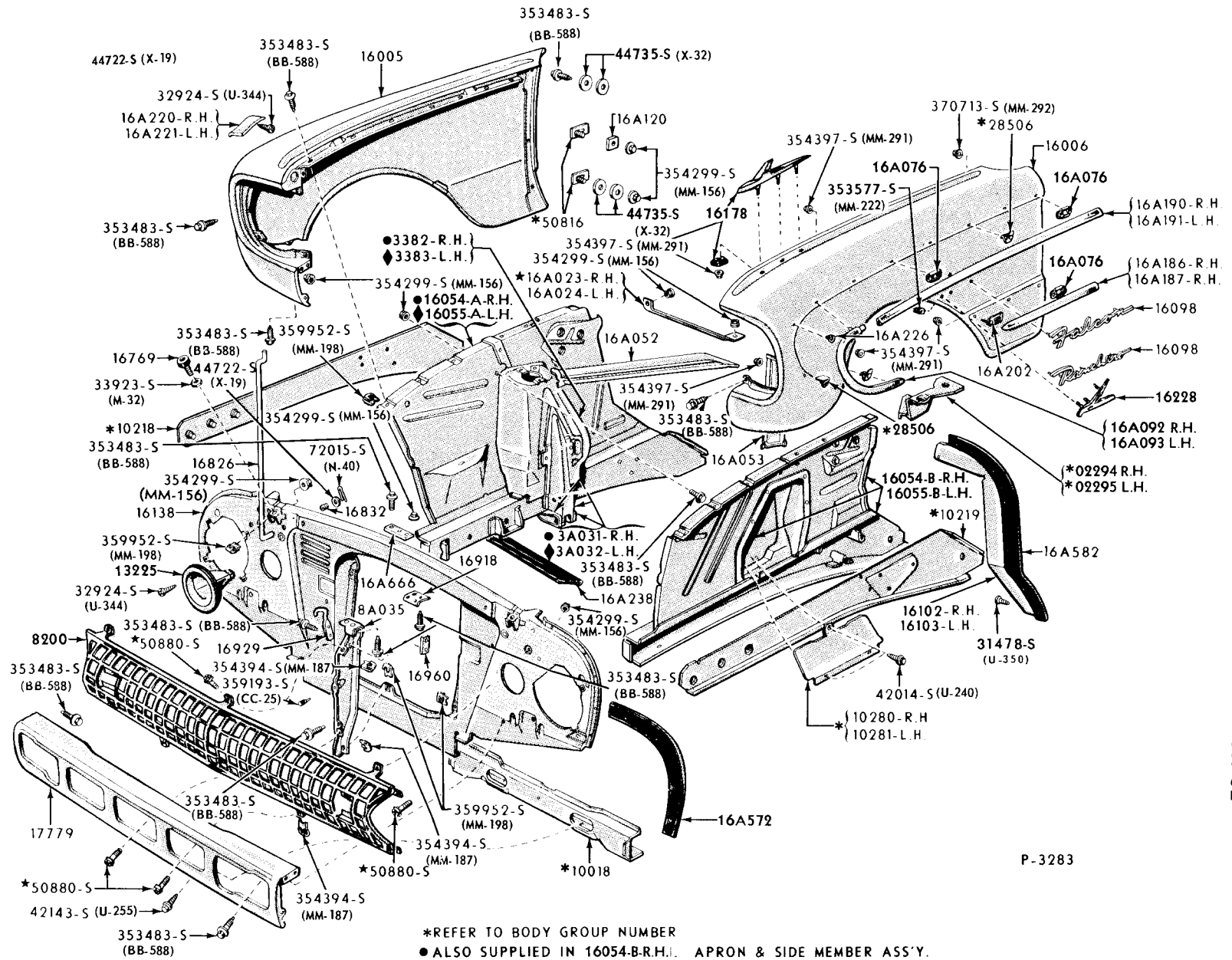
FORD CAR PARTS
ILLUSTRATION SECTION 82



RADIATOR GRILLE, FRONT BUMPER and RELATED PARTS (1961/63 THUNDERBIRD)

▲ REFER TO BODY GROUP NO.
 * ALSO SUPPLIED IN ▲ 11032 AND
 ▲ 11033 FRONT VIBRATION DAMPER
 AND ARM ASS'YS.

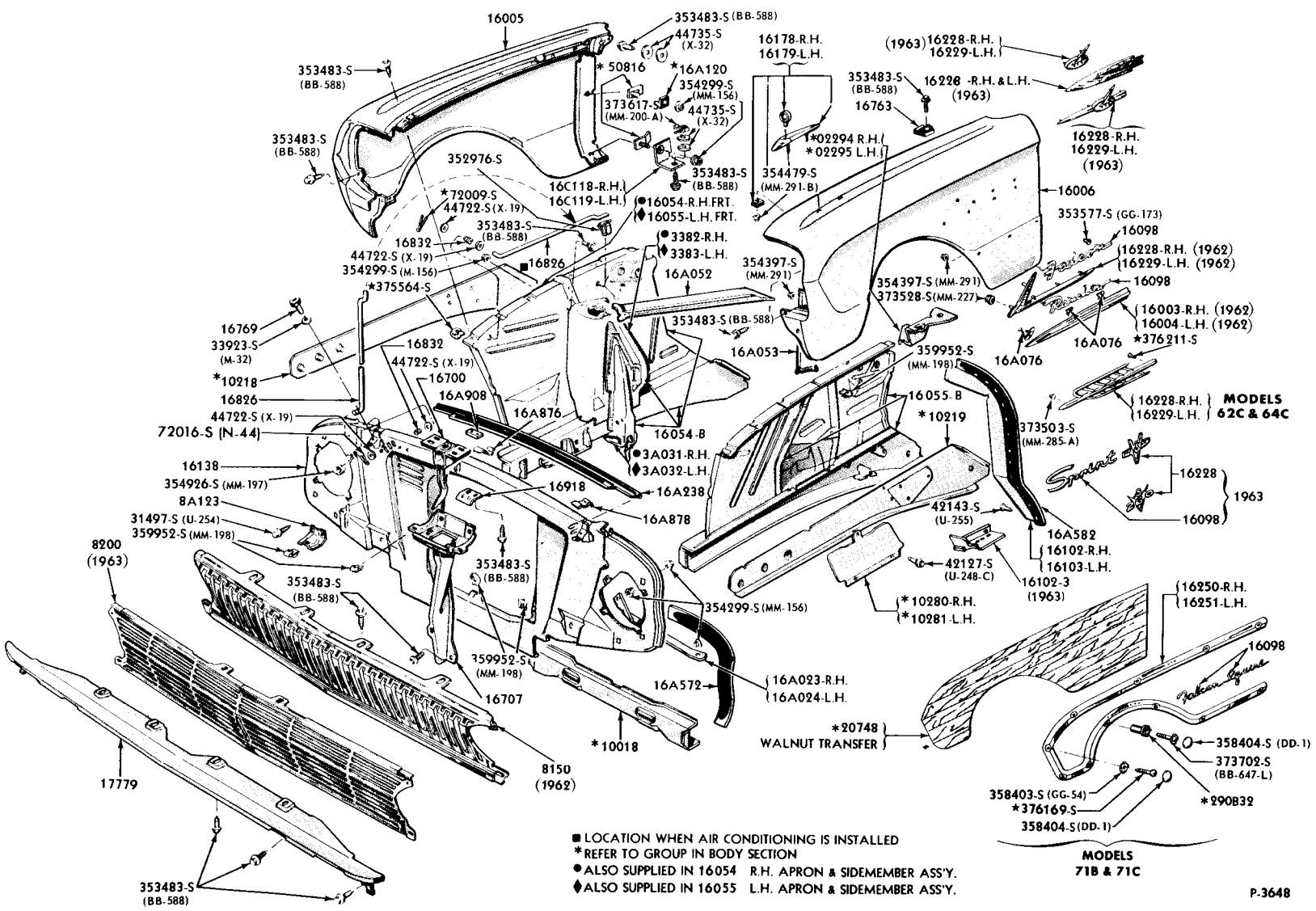
RADIATOR GRILLE, FENDERS, MOLDINGS and RELATED PARTS
(1961 FALCON)



*REFER TO BODY GROUP NUMBER
 ● ALSO SUPPLIED IN 16054-B-R.H. APRON & SIDE MEMBER ASS'Y.
 ◆ ALSO SUPPLIED IN 16055-B-L.H. APRON & SIDE MEMBER ASS'Y.

P-3283

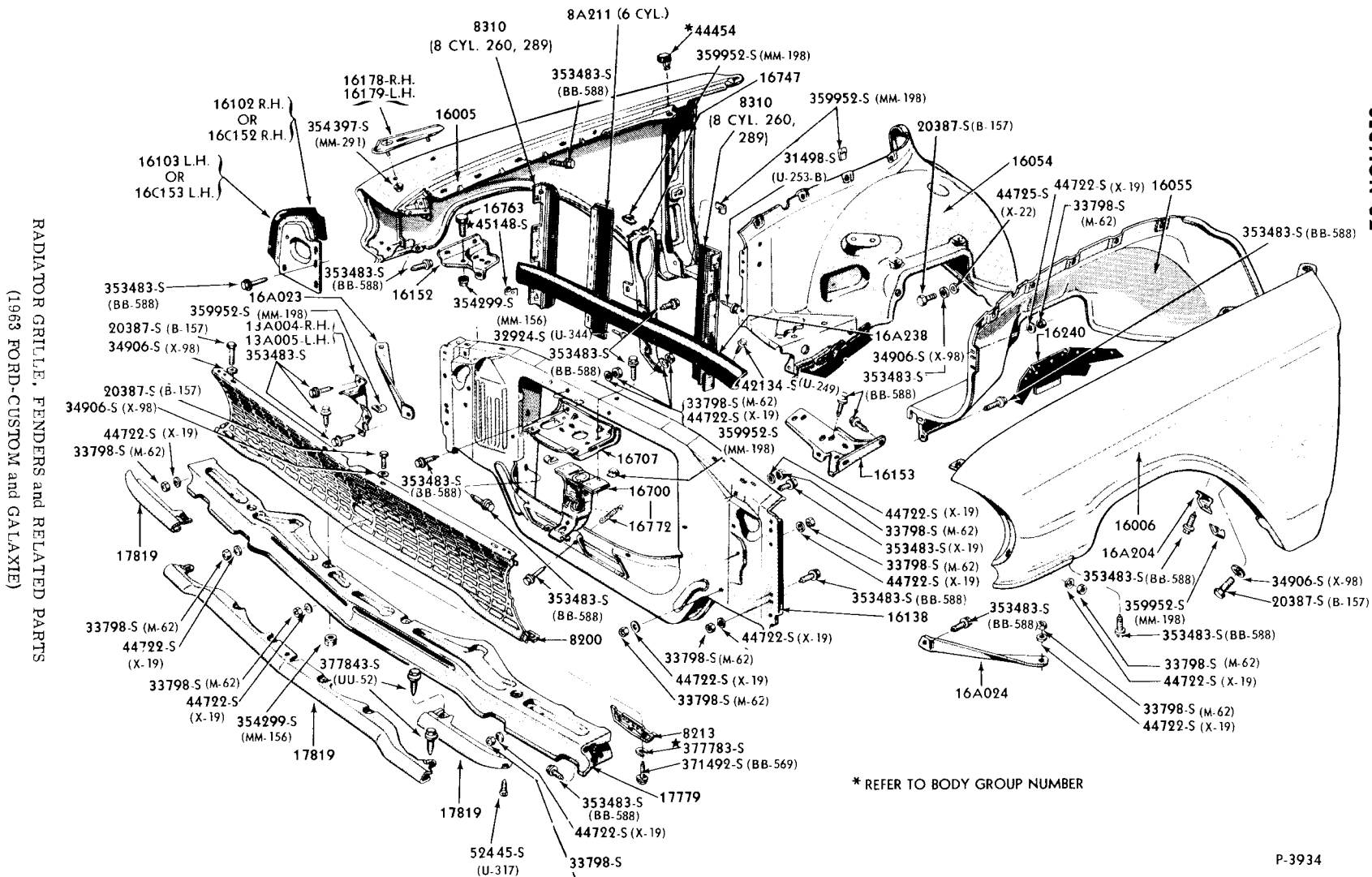
FORD CAR PARTS
ILLUSTRATION 82



■ LOCATION WHEN AIR CONDITIONING IS INSTALLED
 * REFER TO GROUP IN BODY SECTION
 ● ALSO SUPPLIED IN 16054 R.H. APRON & SIDEMEMBER ASSY.
 ◆ ALSO SUPPLIED IN 16055 L.H. APRON & SIDEMEMBER ASSY.

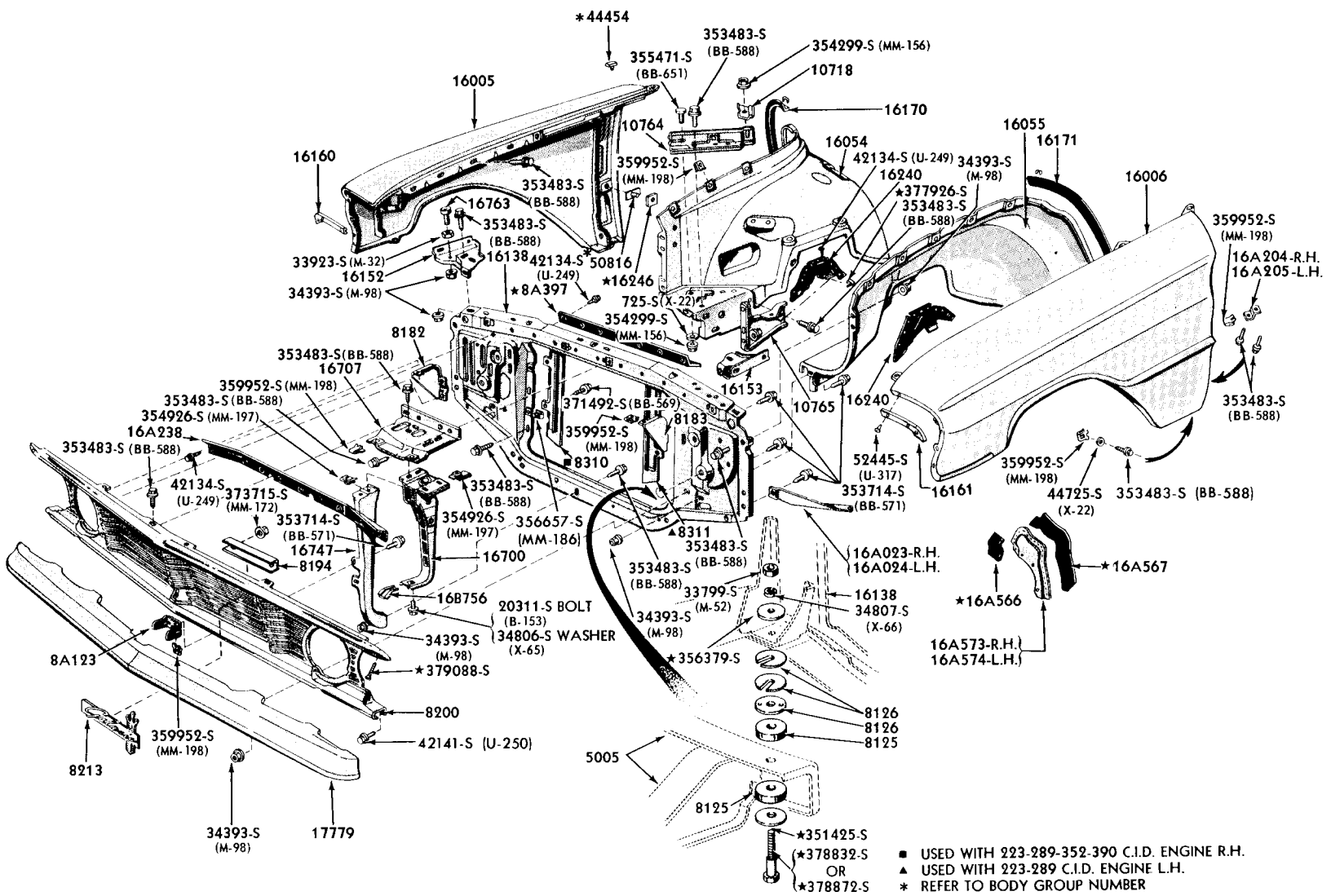
P-3648

RADIATOR GRILLE, FENDERS, MOLDINGS and RELATED PARTS
 (1962/63 FALCON)



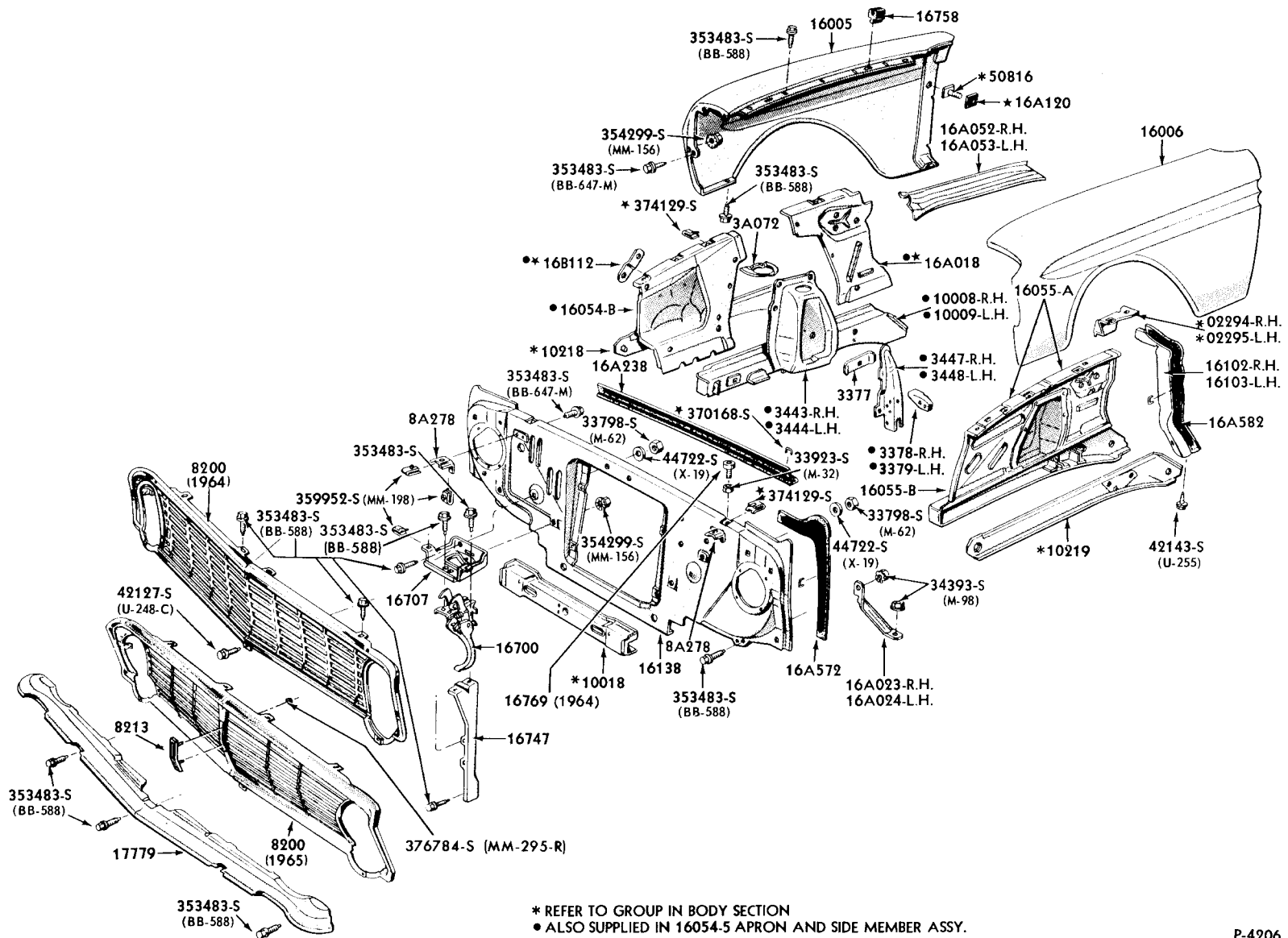
RADIATOR GRILLE, FENDERS and RELATED PARTS (1968 FORD-CUSTOM and GALAXIE)

RADIATOR GRILLE, FENDERS and RELATED PARTS
(1964 FORD-CUSTOM and GALAXIE)

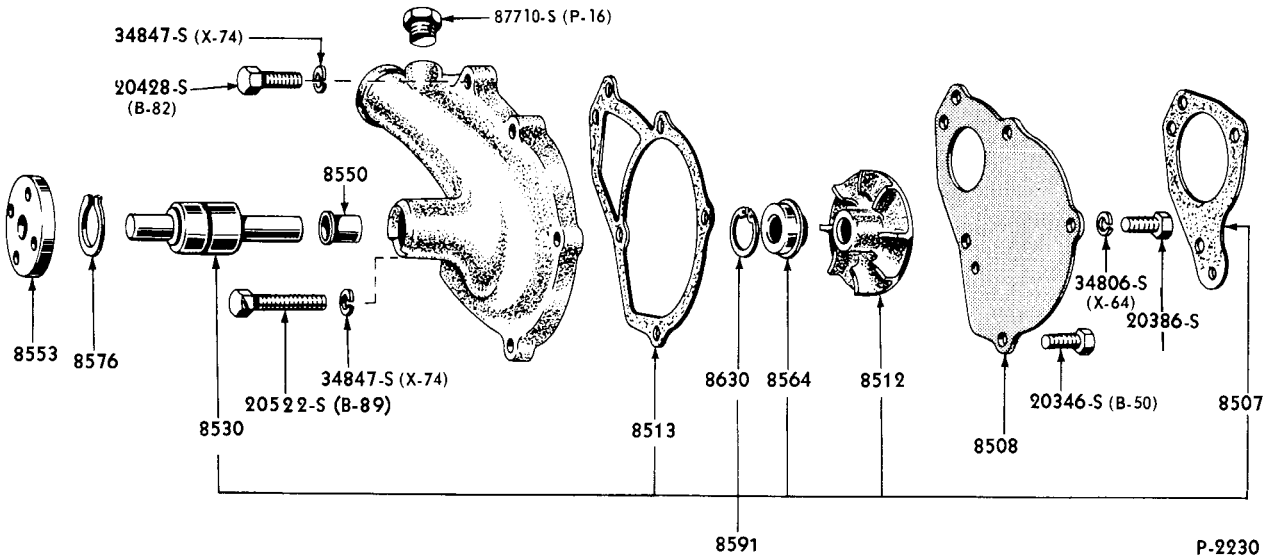


- USED WITH 223-289-352-390 C.I.D. ENGINE R.H.
- ▲ USED WITH 223-289 C.I.D. ENGINE L.H.
- * REFER TO BODY GROUP NUMBER

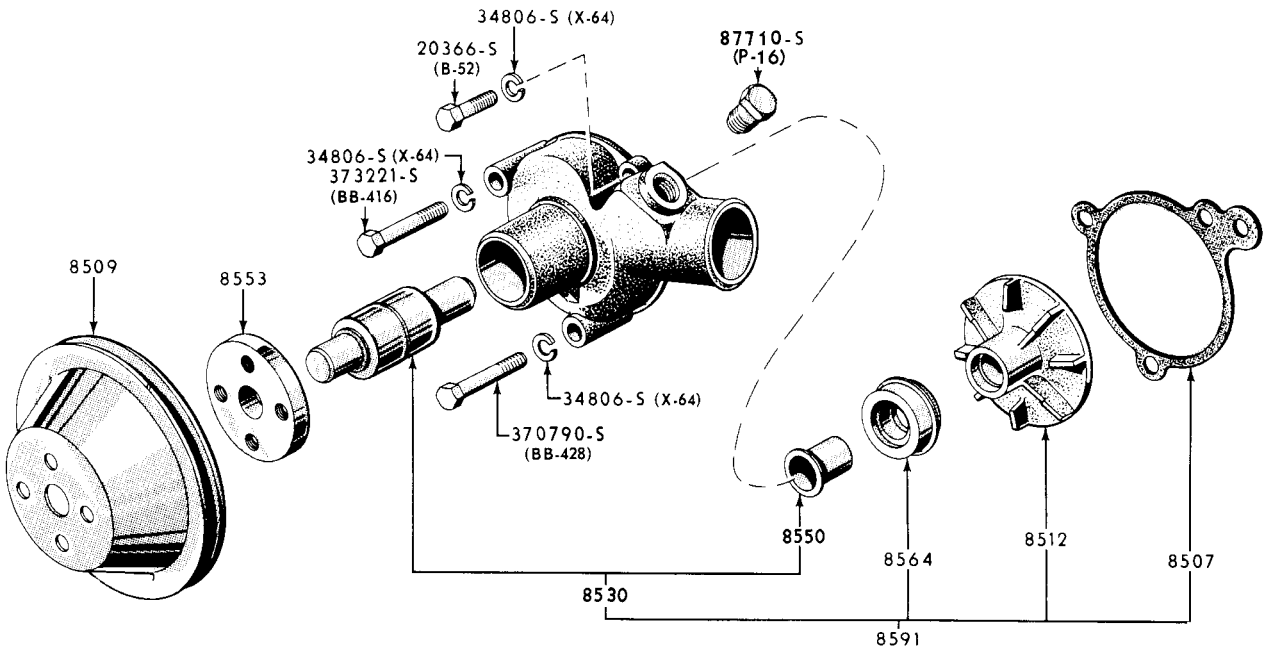
RADIATOR GRILLE, FENDERS and RELATED PARTS
(1964/ FALCON)



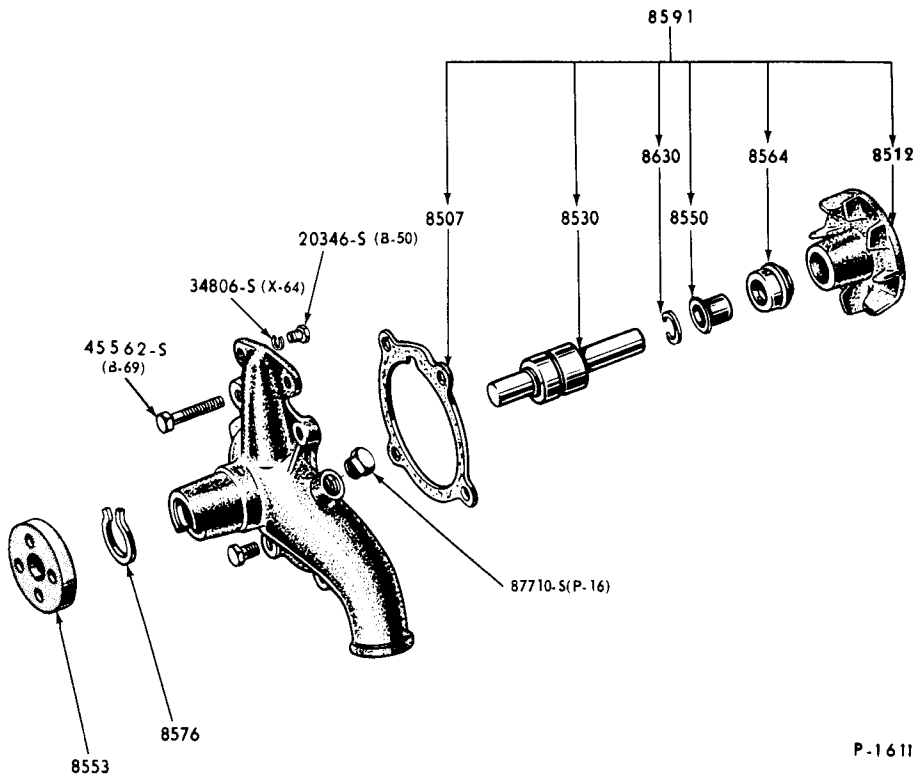
* REFER TO GROUP IN BODY SECTION
 • ALSO SUPPLIED IN 16054-5 APRON AND SIDE MEMBER ASSY.



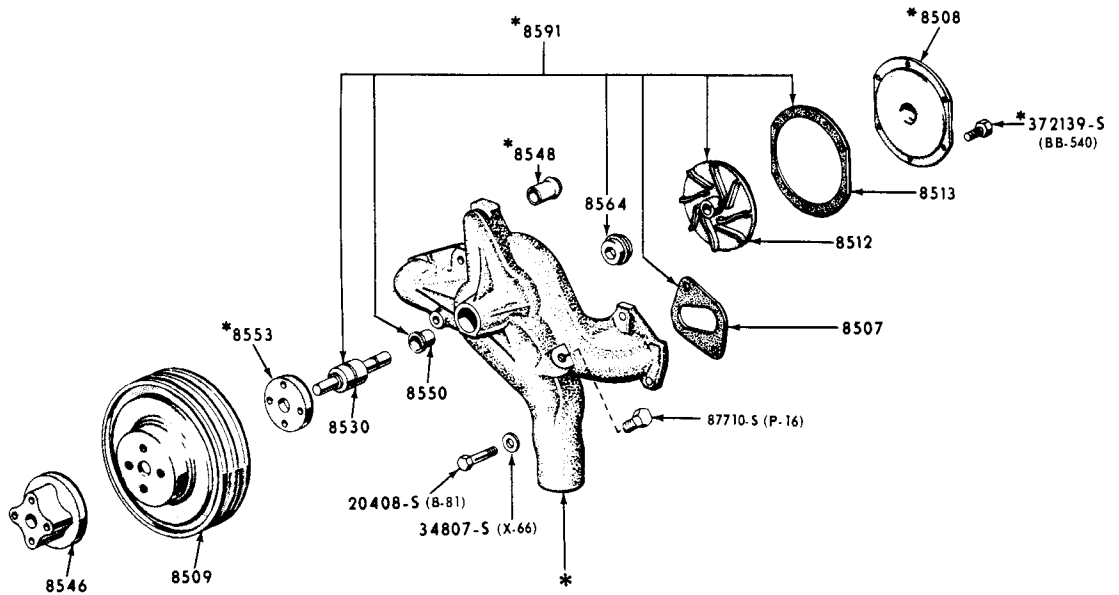
1960/64 WATER PUMP (6 CYLINDER 223 ENGINE)-TYPICAL



1960/ WATER PUMP (6 CYLINDER 144, 170, 200 ENGINES)

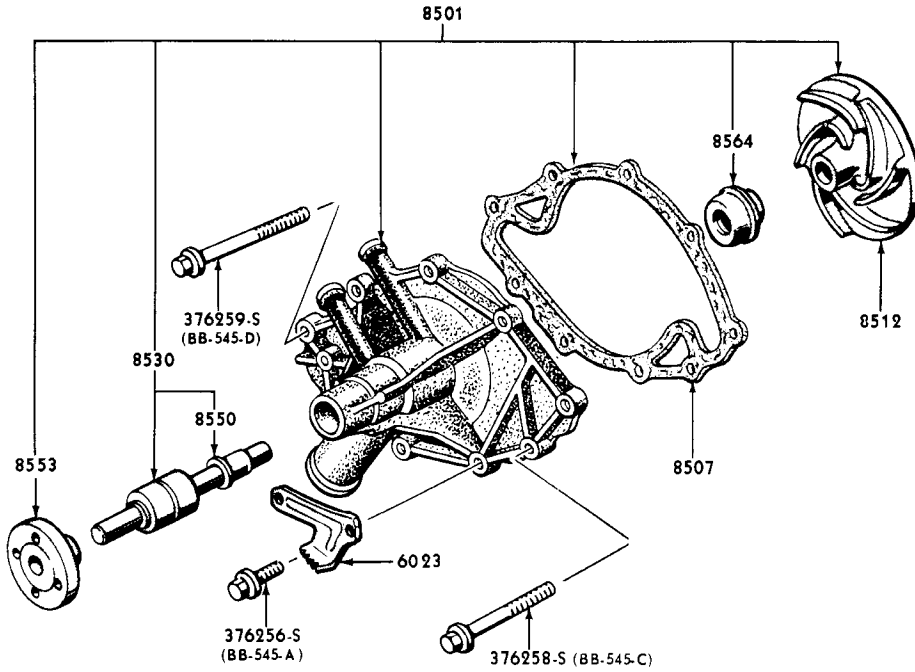


1960/62 WATER PUMP (8 CYL, 292 ENGINE)-TYPICAL



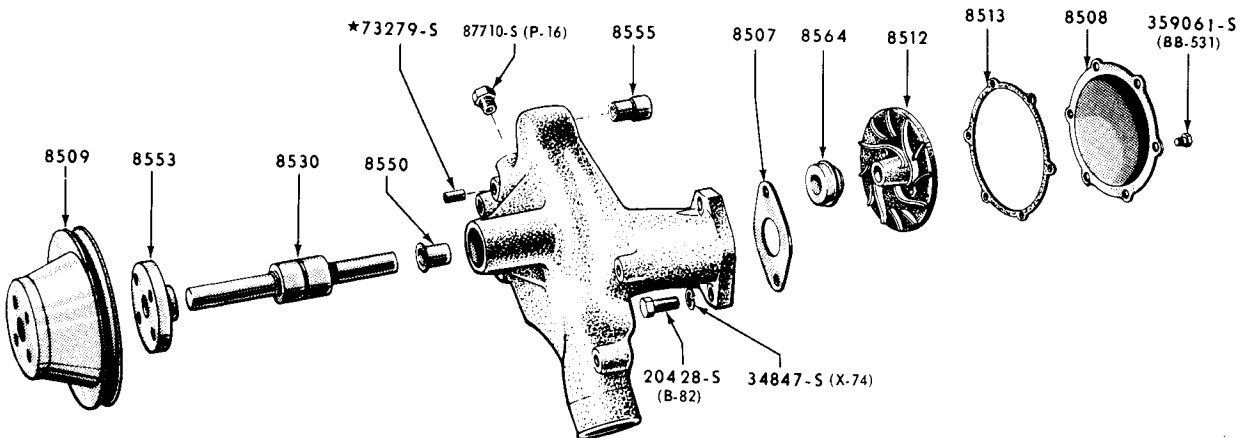
*ALSO SUPPLIED IN 8501 PUMP ASSEMBLY

1960 WATER PUMP (8 CYL, 430 ENGINE)



P-3772

1962/ WATER PUMP WITHOUT COVER (8 CYLINDER 221, 260, 289 ENGINES)



P-2491

1960/ WATER PUMP (8 CYLINDER 352, 390, 406, 427 ENGINES)

