

**INDEX**

Below is a list of the major groups and the order in which they are listed in this Index.

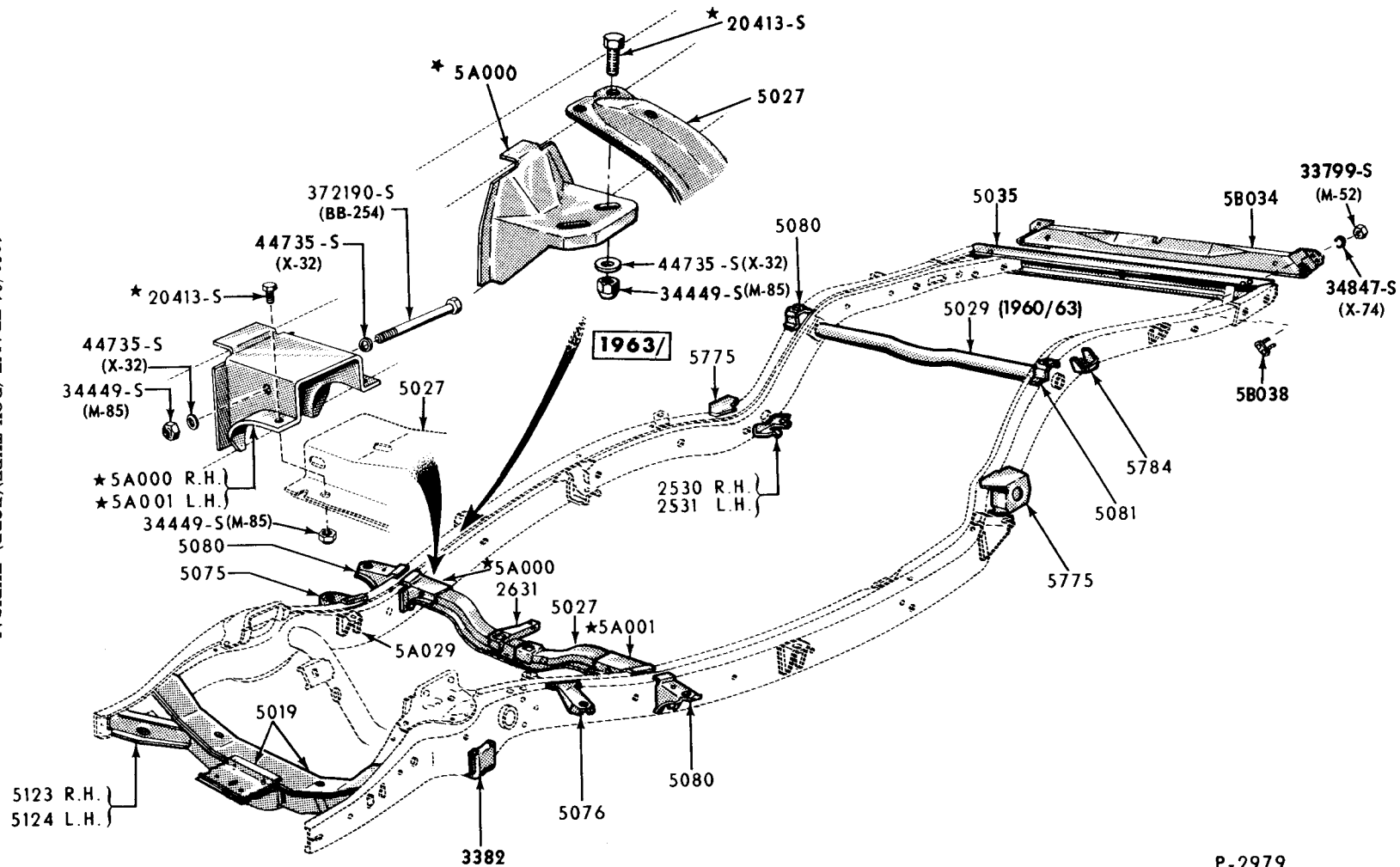
FRAME  
EXHAUST SYSTEM

FRONT SPRINGS  
REAR SUSPENSION & SPRINGS

STABILIZER

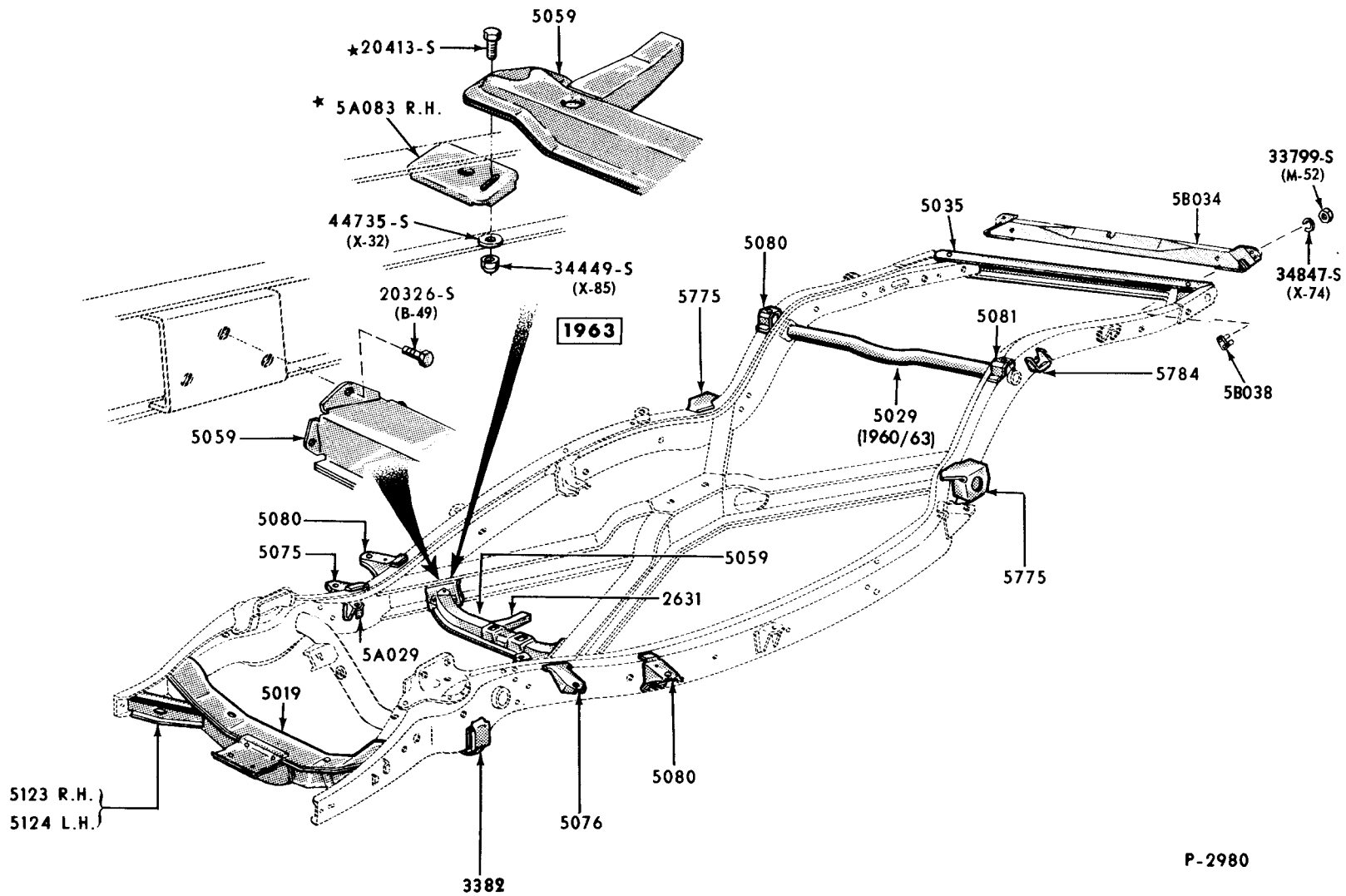
YEAR	TITLE	ILLUS. NO.	SECTION	PAGE
<b>FRAME</b>				
1960/64	Frame (box type)(Ford)-Typical	P-2979	50	116
1960/64	Frame ("X" type)(Ford)-Typical	P-2980	50	117
	For Cars With Unitized Construction-See Sheet Metal Illustration Section			
<b>EXHAUST SYSTEM</b>				
- A -				
1960/62	Exhaust System-Single (Ford-6 & 8 Cylinder)-Typical	P-3083	52	118
1960/62	Exhaust System-Dual (Ford-8 Cylinder)-Typical	P-3084	52	119
1963/64	Exhaust System-Single (Ford-Custom & Galaxie-except Model 76)	P-4113	52	120
1963/64	Exhaust System-Dual & Single (Galaxie Model 76)	P-4114	52	121
- B -				
1962/	Exhaust System-Single (Fairlane Sedans & Convertibles)-6 & 8 Cylinder Engines	P-3735	52	122
1963/	Exhaust System-Single (Fairlane-Station Wagon)-6 & 8 Cylinder Engines	P-4065	52	123
1964/	Exhaust System-Dual (Fairlane)-8 Cylinder 289 Special	P-4572	52	124
- S -				
1960	Exhaust System (Thunderbird) -8 cyl. 352	P-2727	52	125
1960	Exhaust System (Thunderbird) -8 cyl. 430	P-3050	52	126
1961/62	Exhaust System-Dual (Thunderbird)	P-3219	52	127
1963	Exhaust System-Single (Thunderbird-8 Cylinder 390 -4V Engine)	P-4120	52	128
1963	Exhaust System-Dual (Thunderbird-8 Cylinder 390-6V Engine)	P-4454	52	129
1964/	Exhaust System-Dual (Thunderbird-8 Cylinder 390-4V Engine)	P-4453	52	130
- X -				
1960/63	Exhaust System (Falcon Sedans & Convertibles)-Typical	P-3123	52	131
1960/63	Exhaust System (Falcon Station Wagon & Ranchero)-Typical	P-3223	52	132
1964	Exhaust System-Single (Falcon 6 Cylinder)	P-4528	52	133
1964	Exhaust System-Single (Falcon 8 Cylinder)	P-4529	52	134
<b>FRONT SPRINGS</b>				
	Refer to Illustration Section 30			
<b>REAR SUSPENSION &amp; SPRINGS</b>				
1960/64	Rear Suspension (Ford)	P-2985	53	135
1962/	Rear Suspension (Fairlane)	P-3662	53	136
1961	Rear Suspension (Thunderbird)	P-3277	53	137
1962/63	Rear Suspension (Thunderbird)	P-3912	53	138
1964/	Rear Suspension (Thunderbird)	P-4351	53	138
1960/	Rear Suspension (Falcon)	P-3125	53	139
<b>STABILIZER</b>				
1960/64	Stabilizer (Ford)	P-2978	53	140
1960/	Stabilizer (Fairlane, Falcon)-Typical	P-3124	53	140
1960	Stabilizer (Thunderbird)-typical	P-3092	53	141
1961/	Stabilizer Bar (Thunderbird)	P-3275	53	141

1960/64 FRAME (BOX TYPE)(FORD)-TYPICAL



P-2979

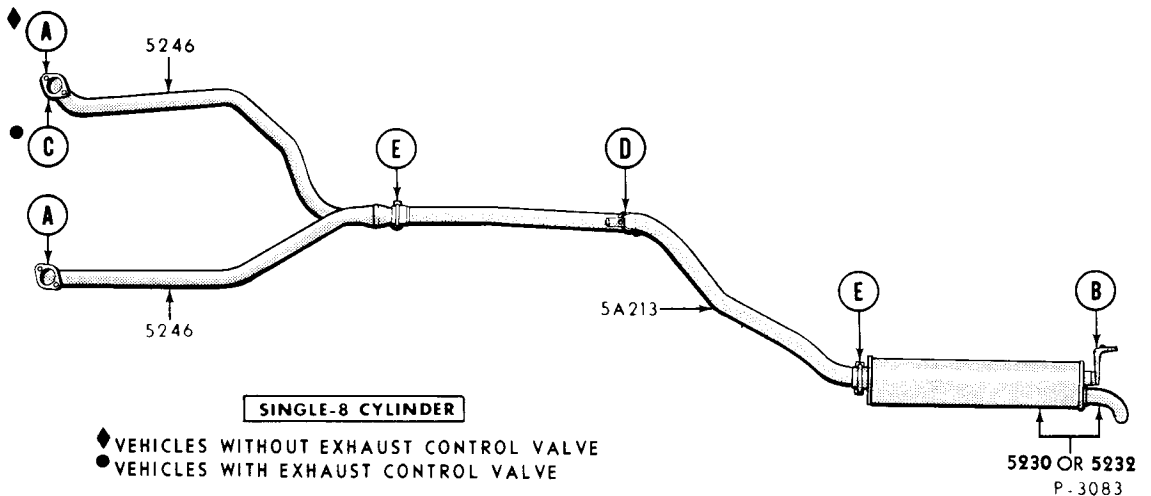
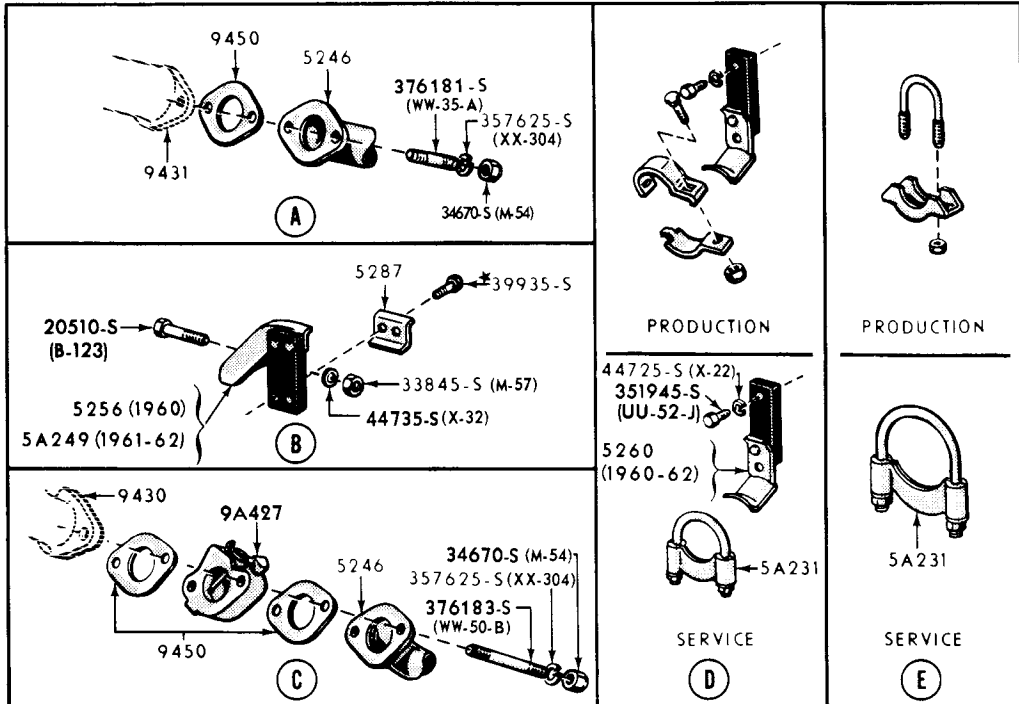
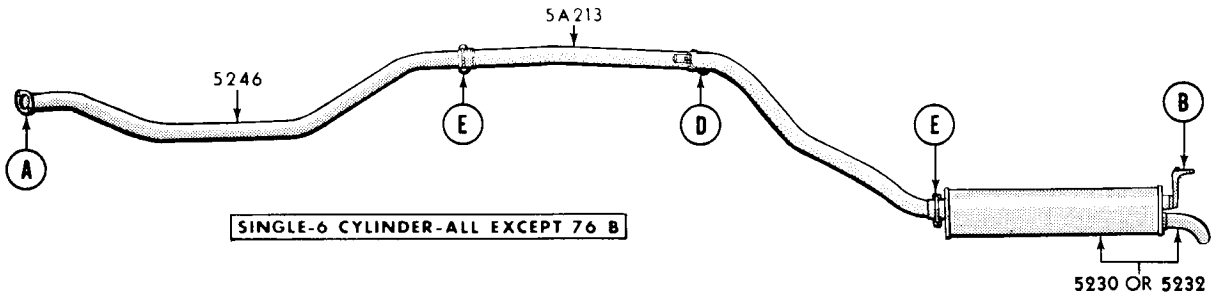
1960/64 FRAME ("X" TYPE)(FORD)-TYPICAL



FORD CAR PARTS

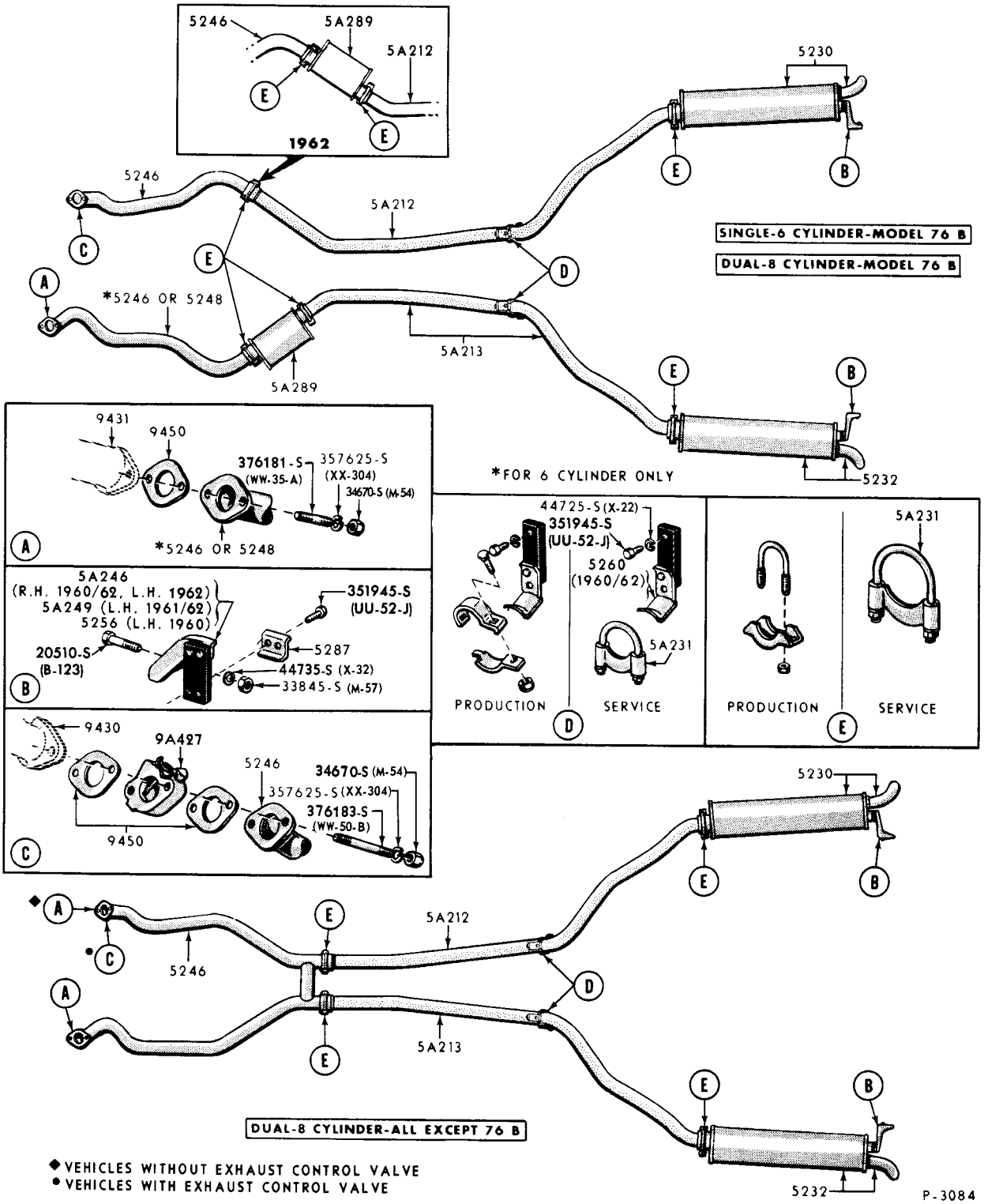
ILLUSTRATION SECTION 50

P-2980

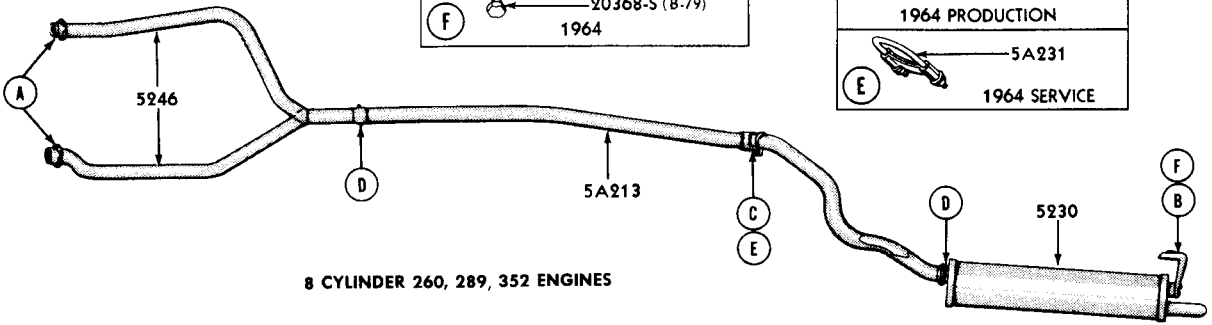
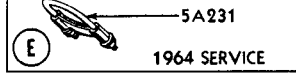
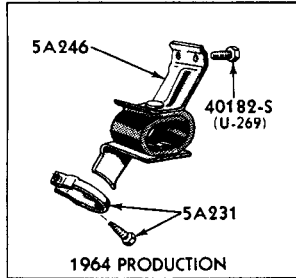
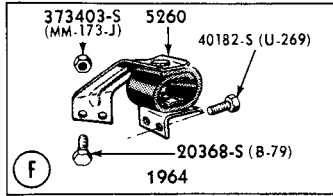
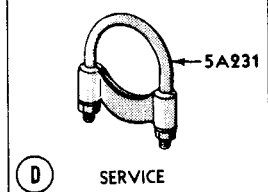
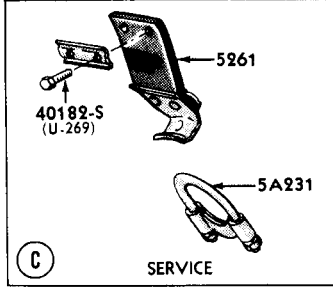
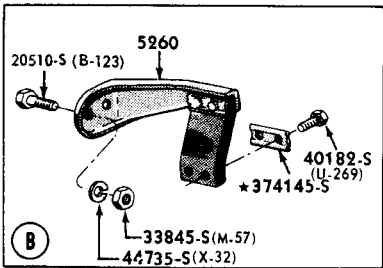
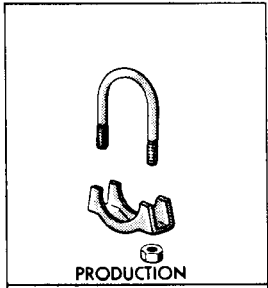
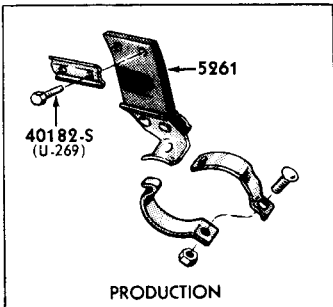
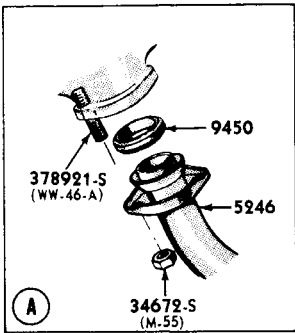
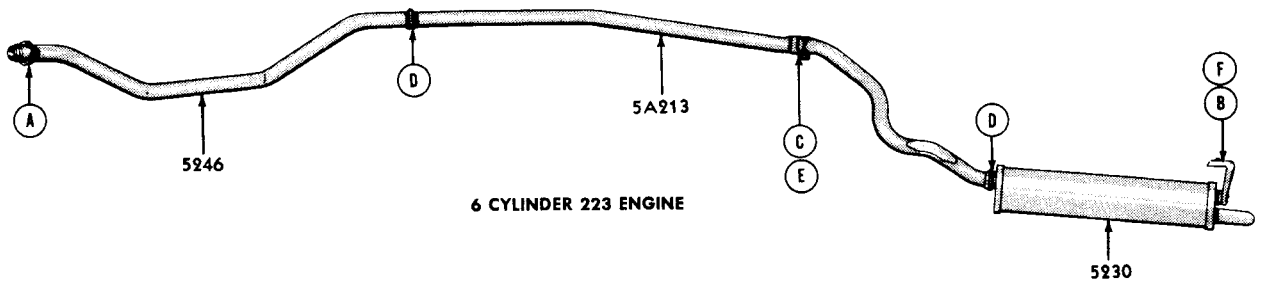


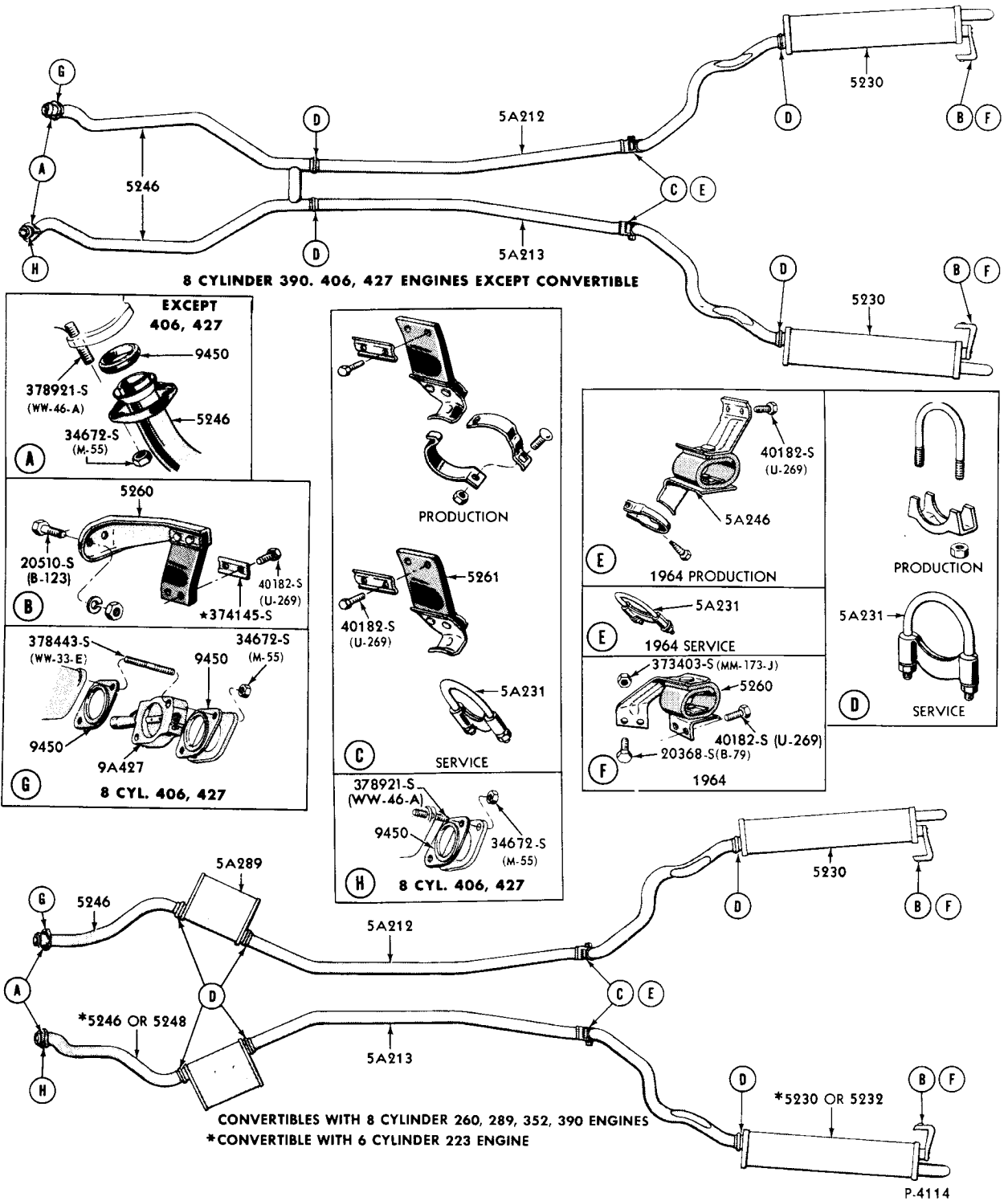
- ◆ VEHICLES WITHOUT EXHAUST CONTROL VALVE
- VEHICLES WITH EXHAUST CONTROL VALVE

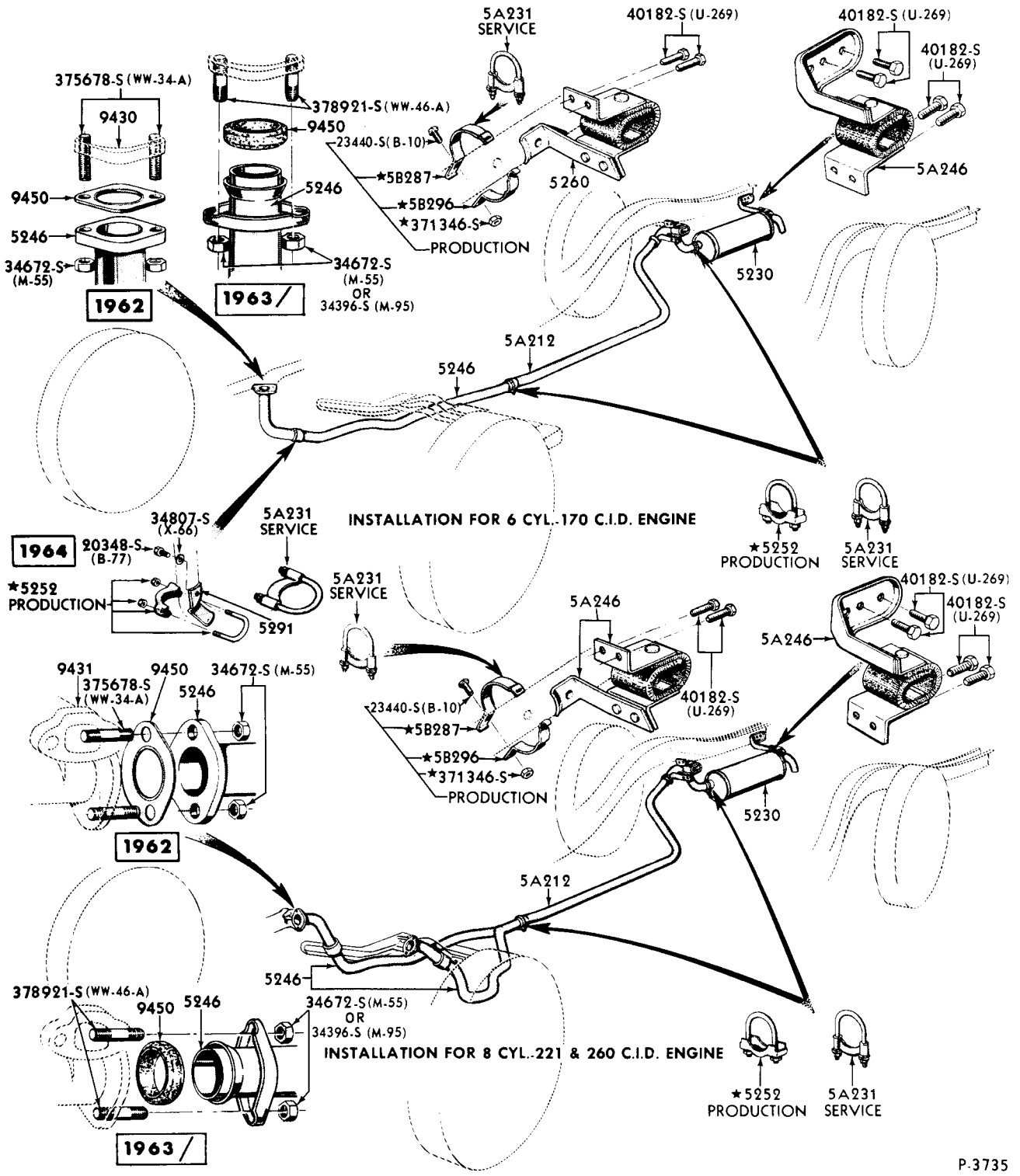
5230 OR 5232  
P-3083



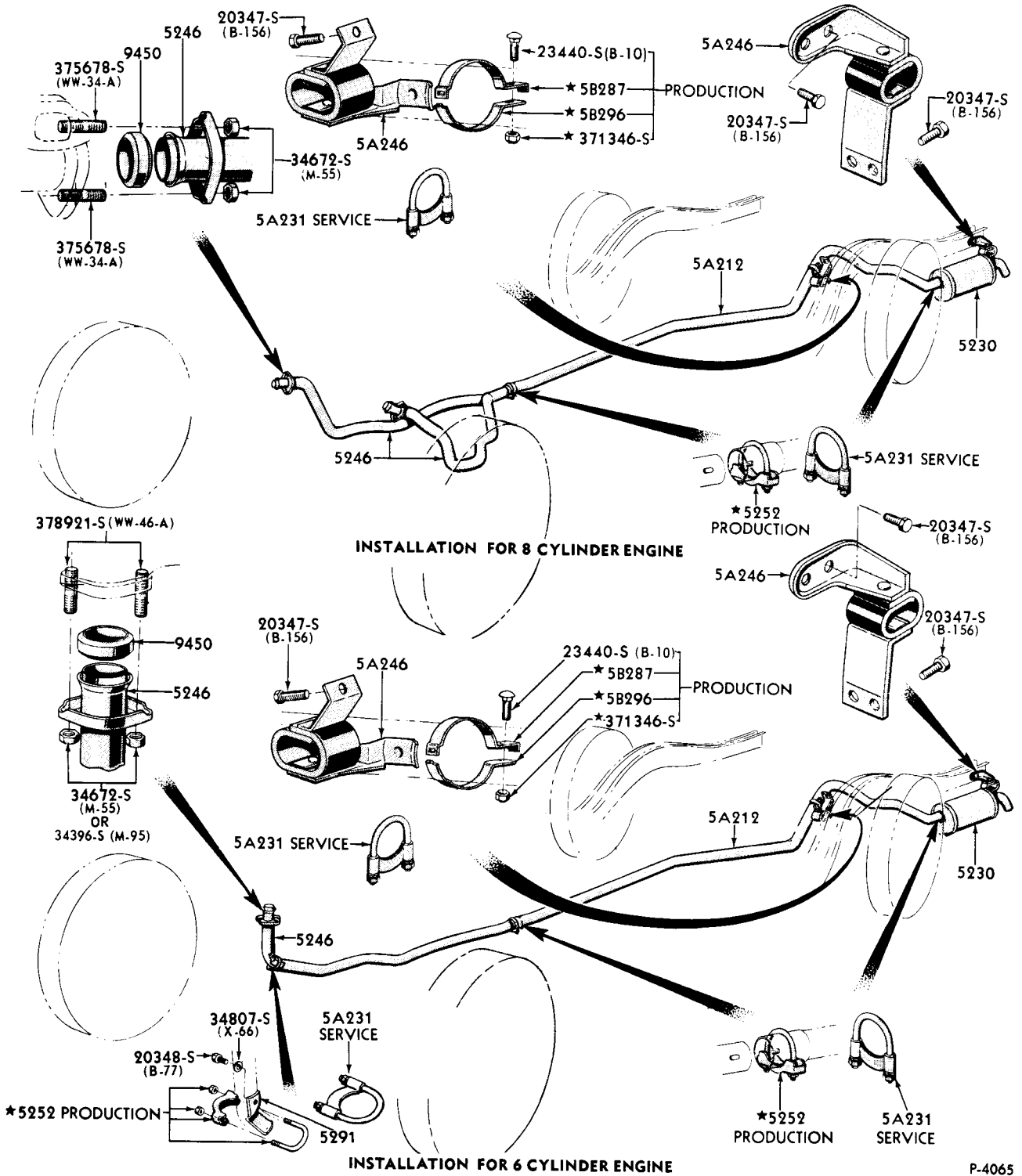
1960/62 EXHAUST SYSTEM - DUAL (FORD - 8 CYLINDER)-TYPICAL

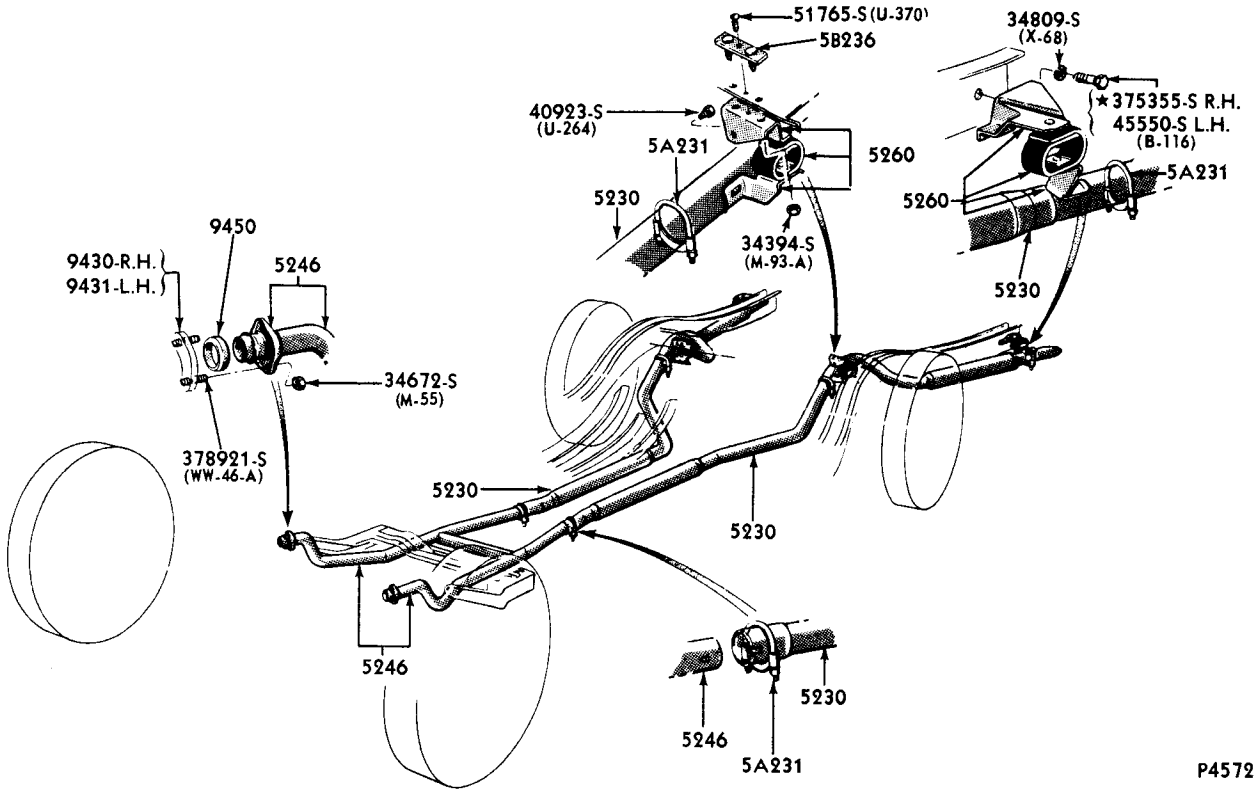






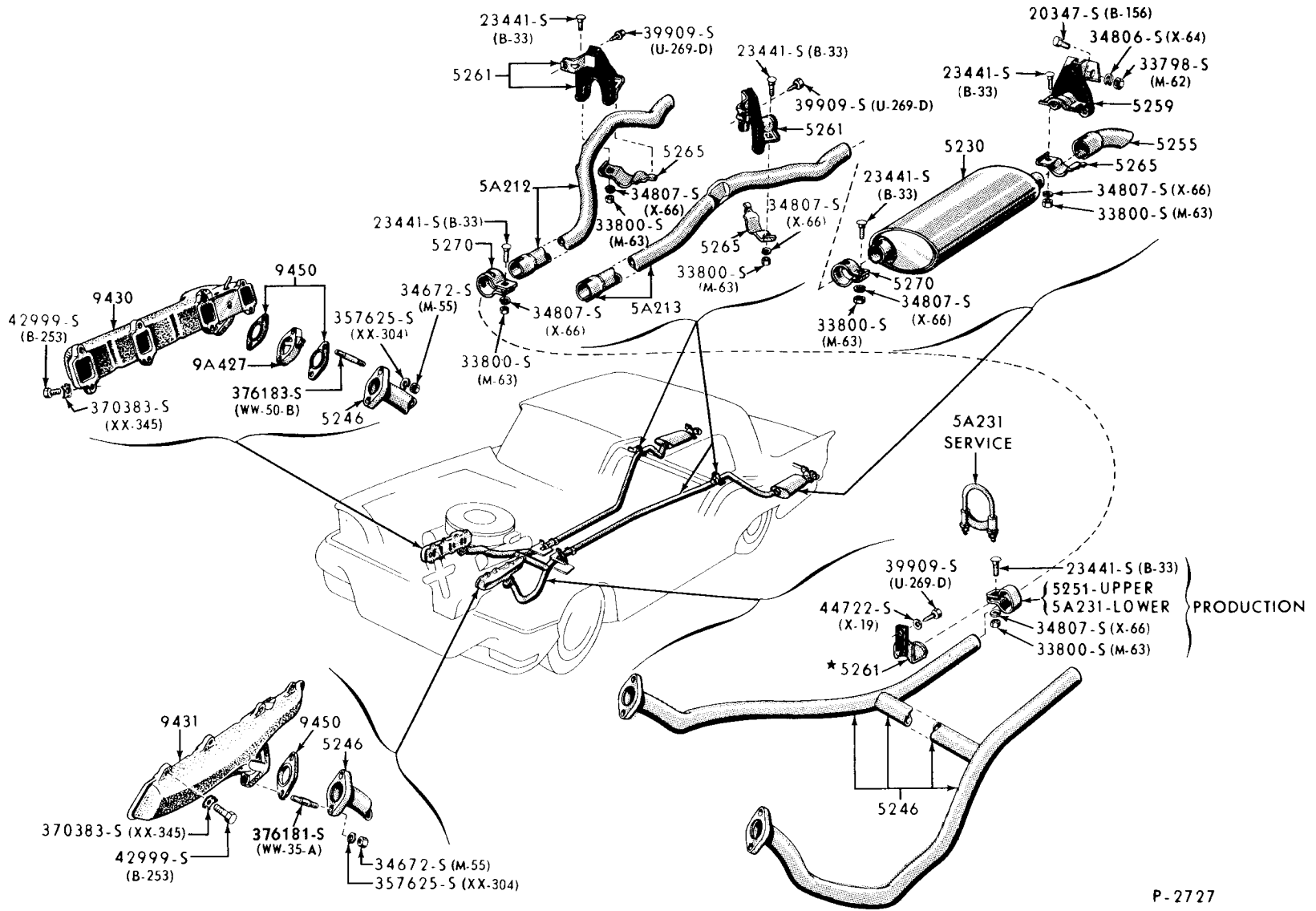


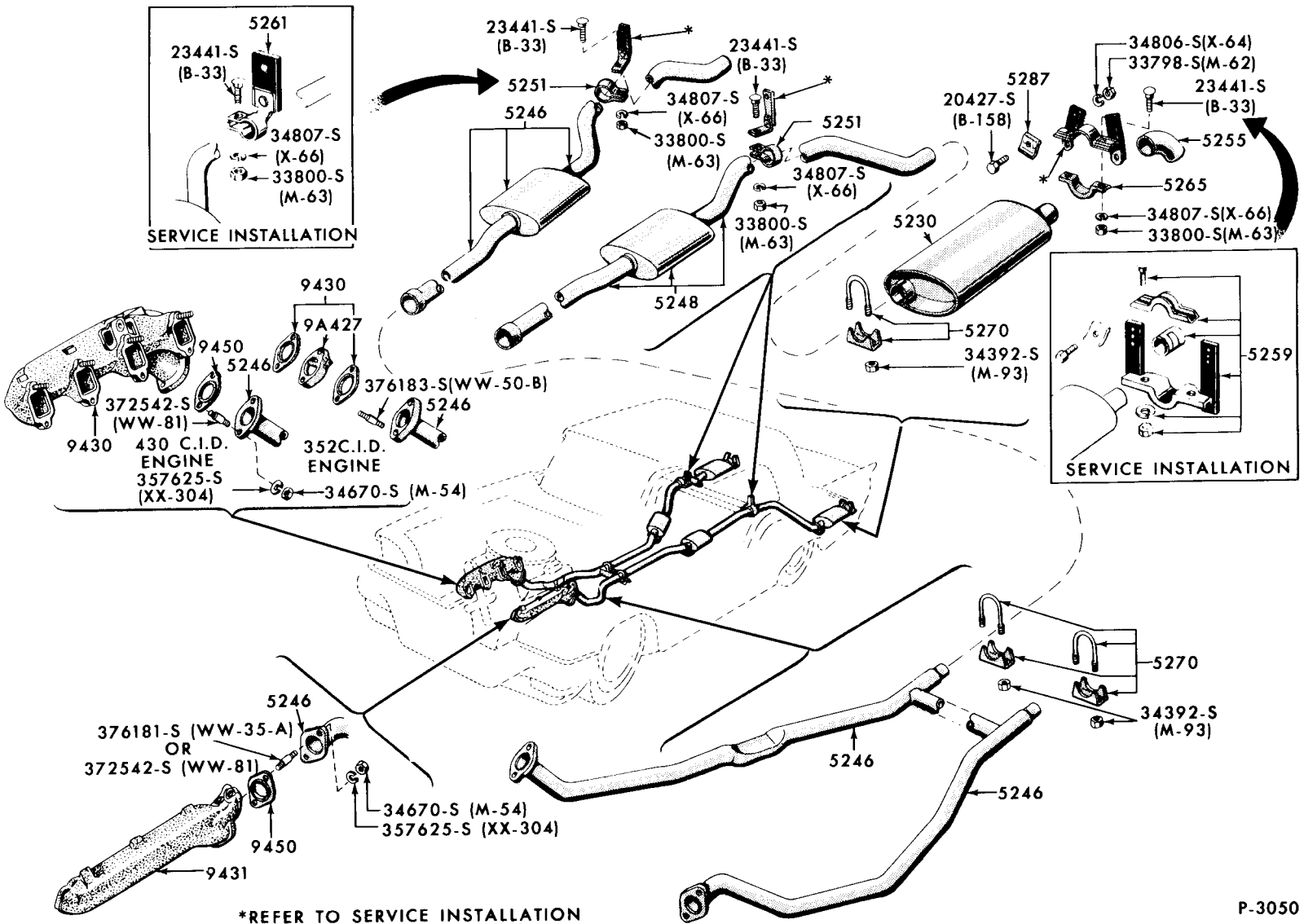




P4572

1964/ EXHAUST SYSTEM-DUAL (FAIRLANE)-8 CYLINDER 289 SPECIAL

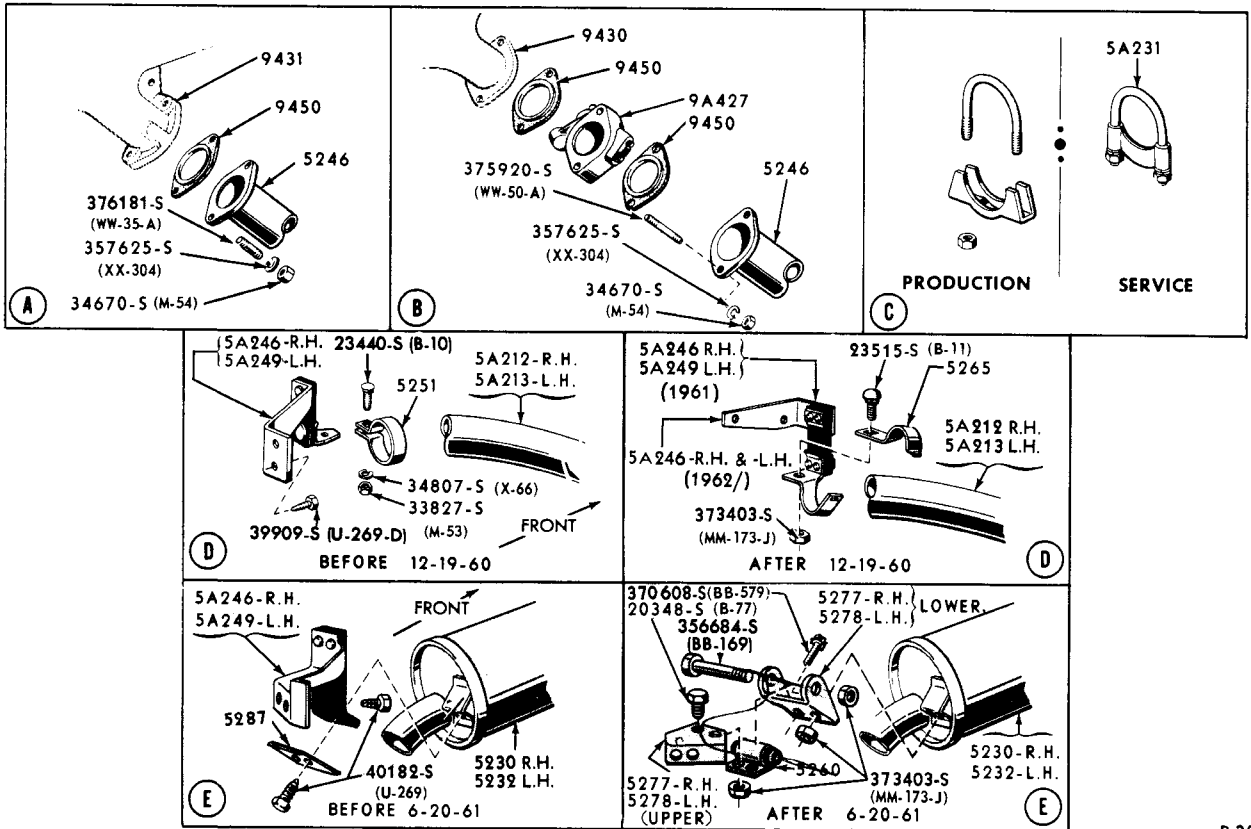
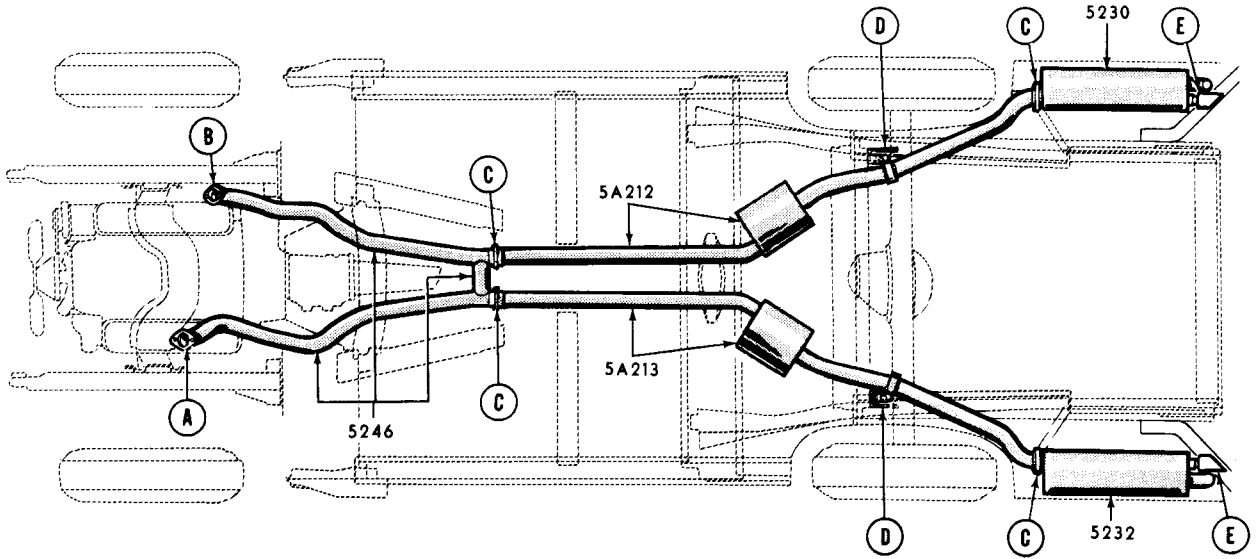




\*REFER TO SERVICE INSTALLATION

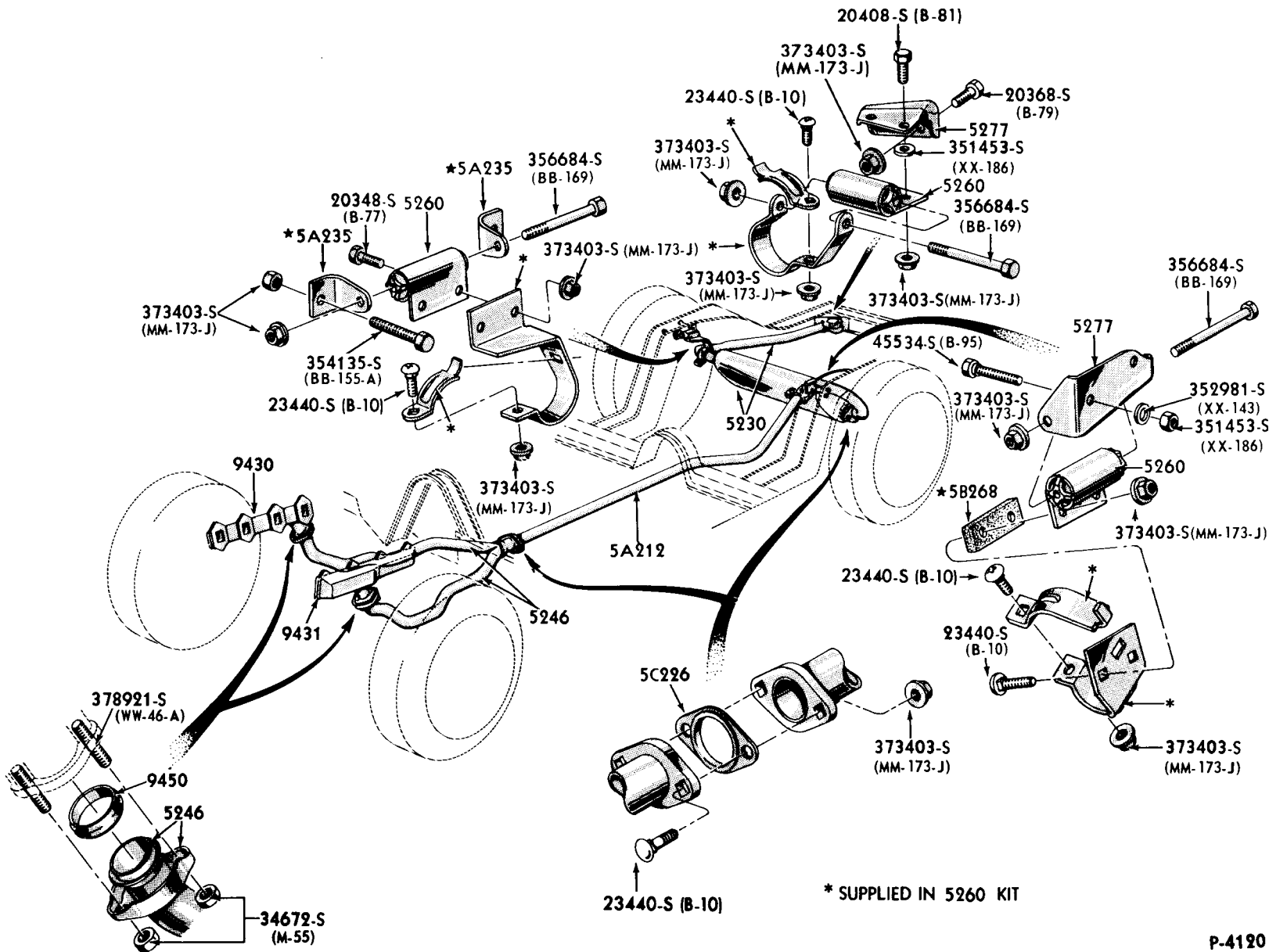
P-3050

1960 EXHAUST SYSTEM (THUNDERBIRD)-8 CYL. 430

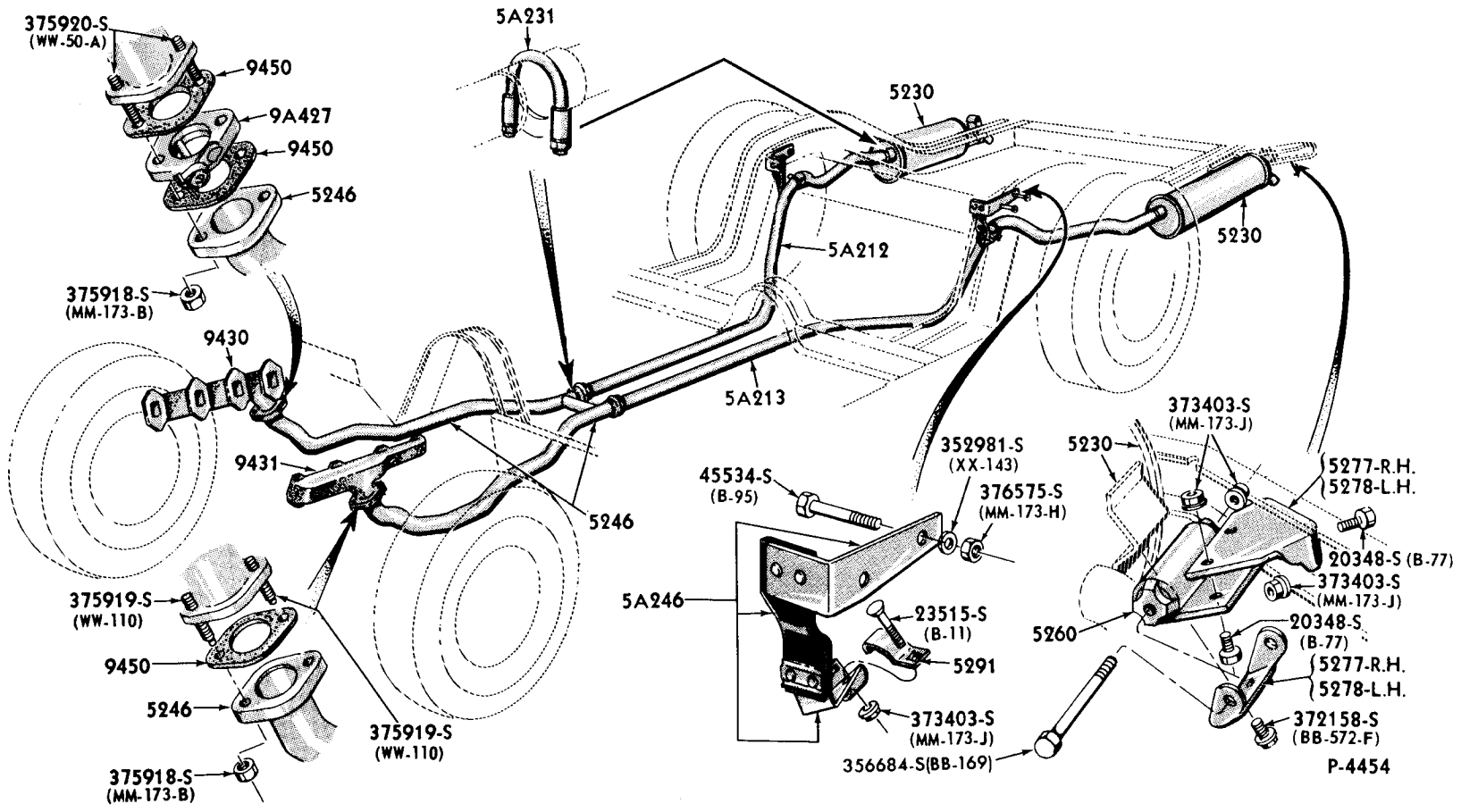


P-3219

1963 EXHAUST SYSTEM - SINGLE (THUNDERBIRD) - 8 CYLINDER 390-4V ENGINE

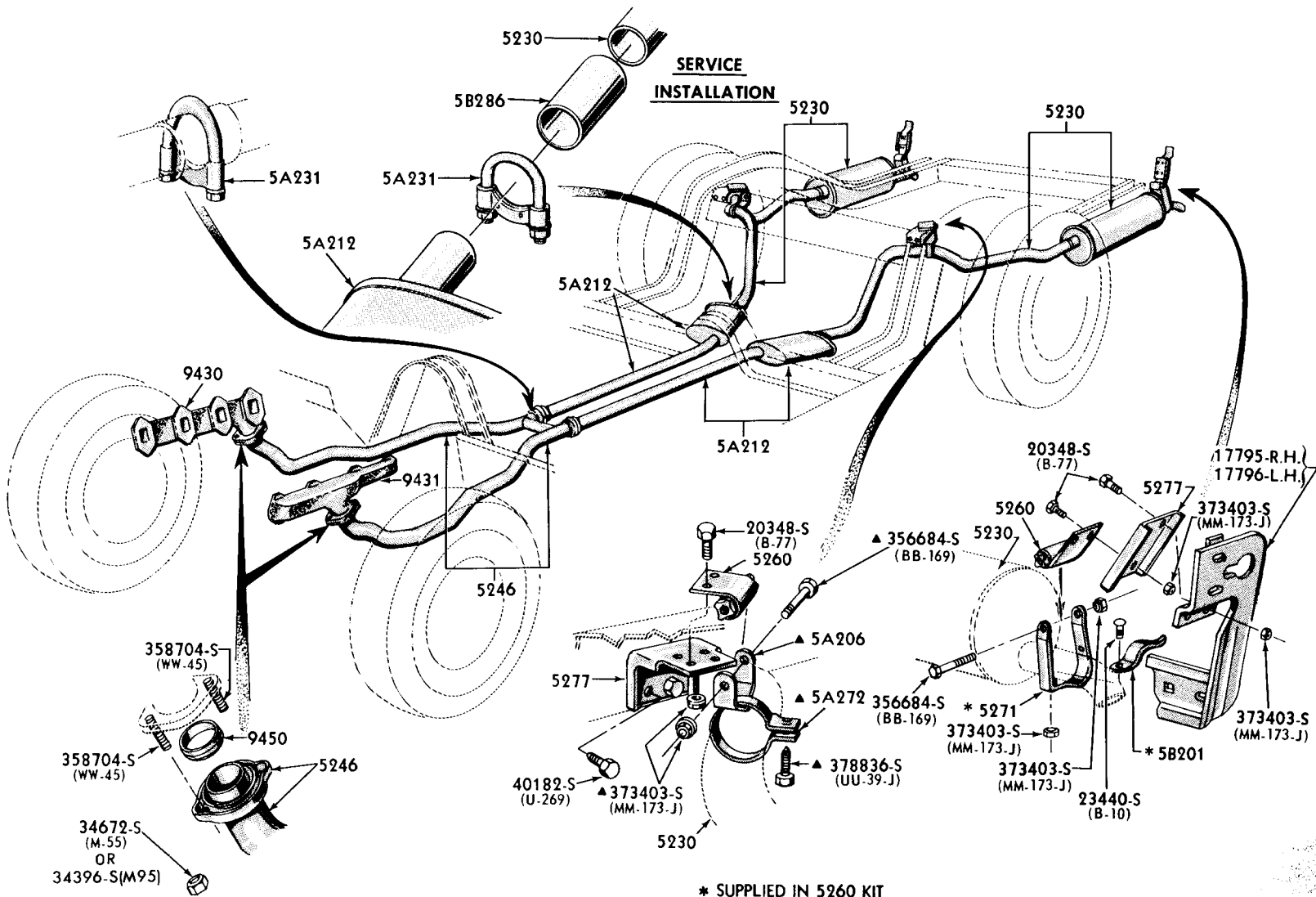


1968 EXHAUST SYSTEM - DUAL (THUNDERBIRD - 8 CYLINDER 390-6V ENGINE)



FORD CAR PARTS

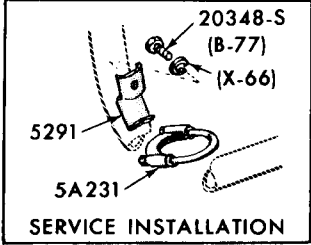
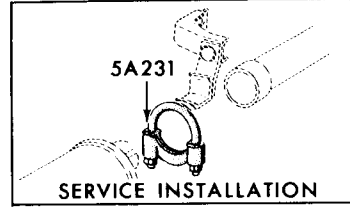
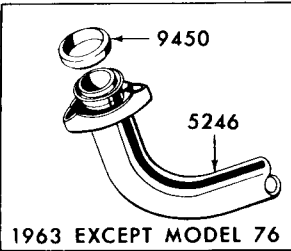
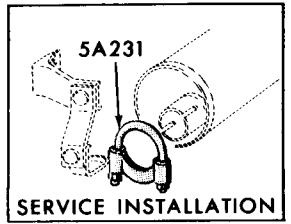
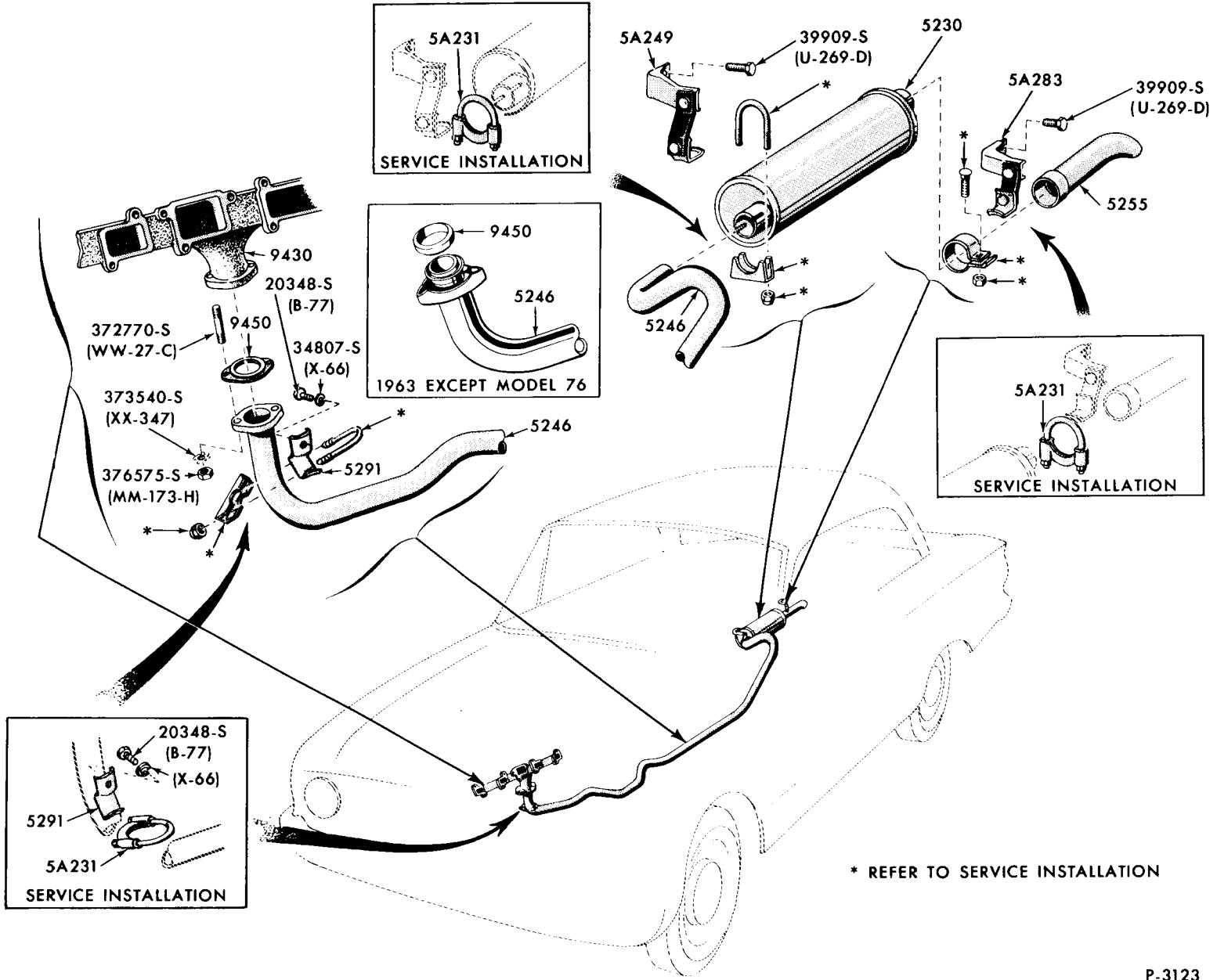
ILLUSTRATION SECTION 52



\* SUPPLIED IN 5260 KIT  
 ▲ SUPPLIED IN 5A246 KIT

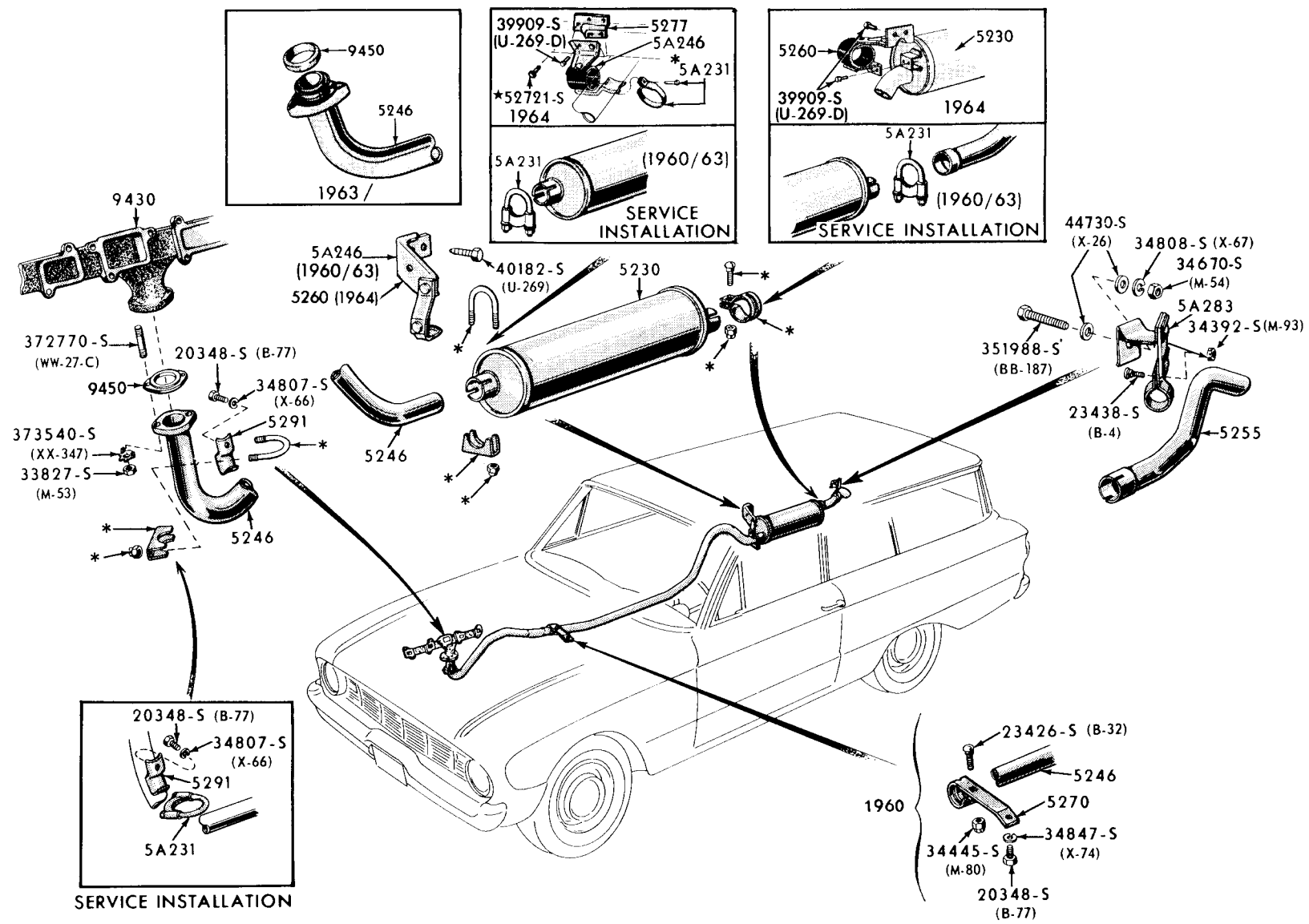
P-4453



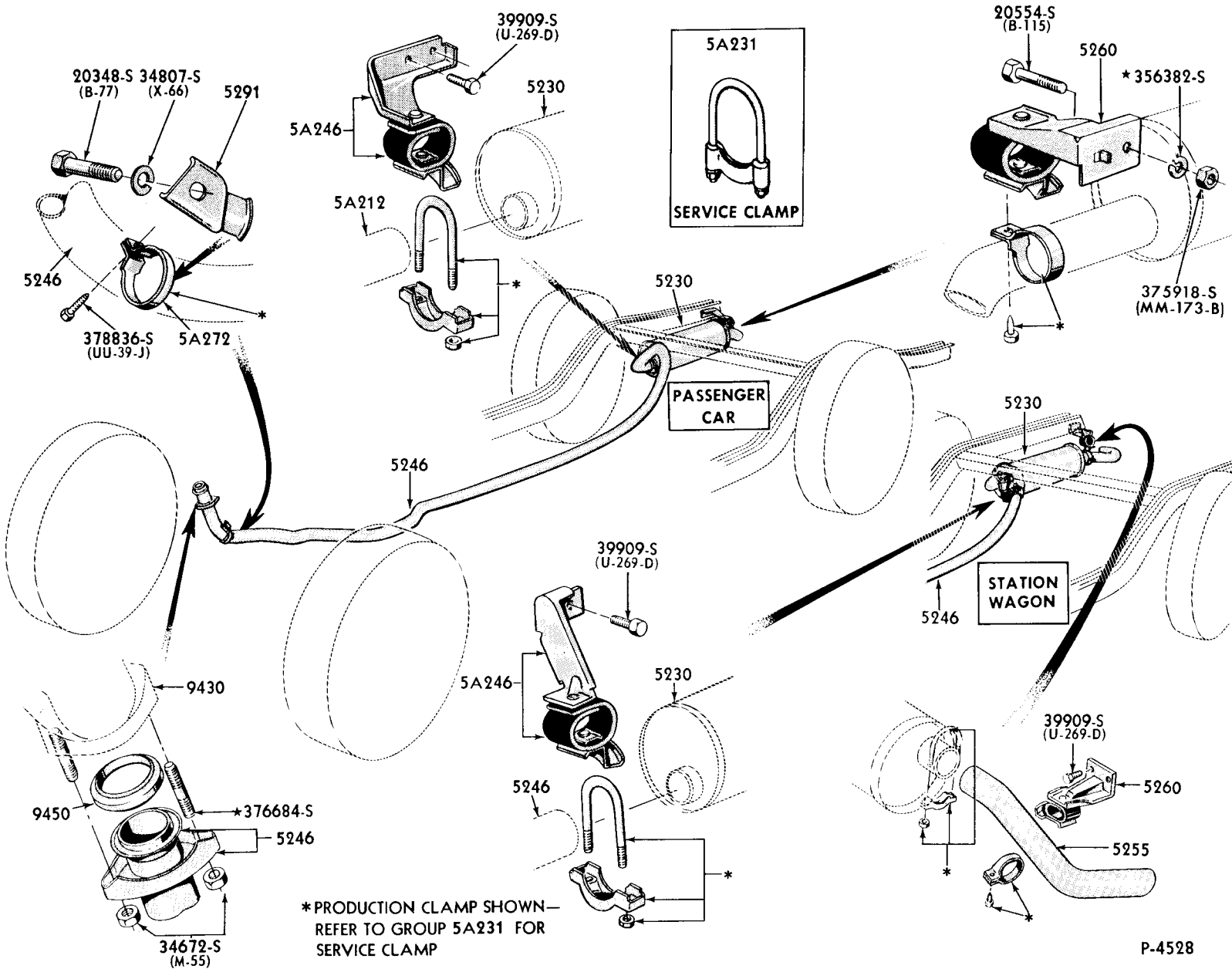


\* REFER TO SERVICE INSTALLATION

1960/63 EXHAUST SYSTEM (FALCON STATION WAGON & RANCHERO)-TYPICAL

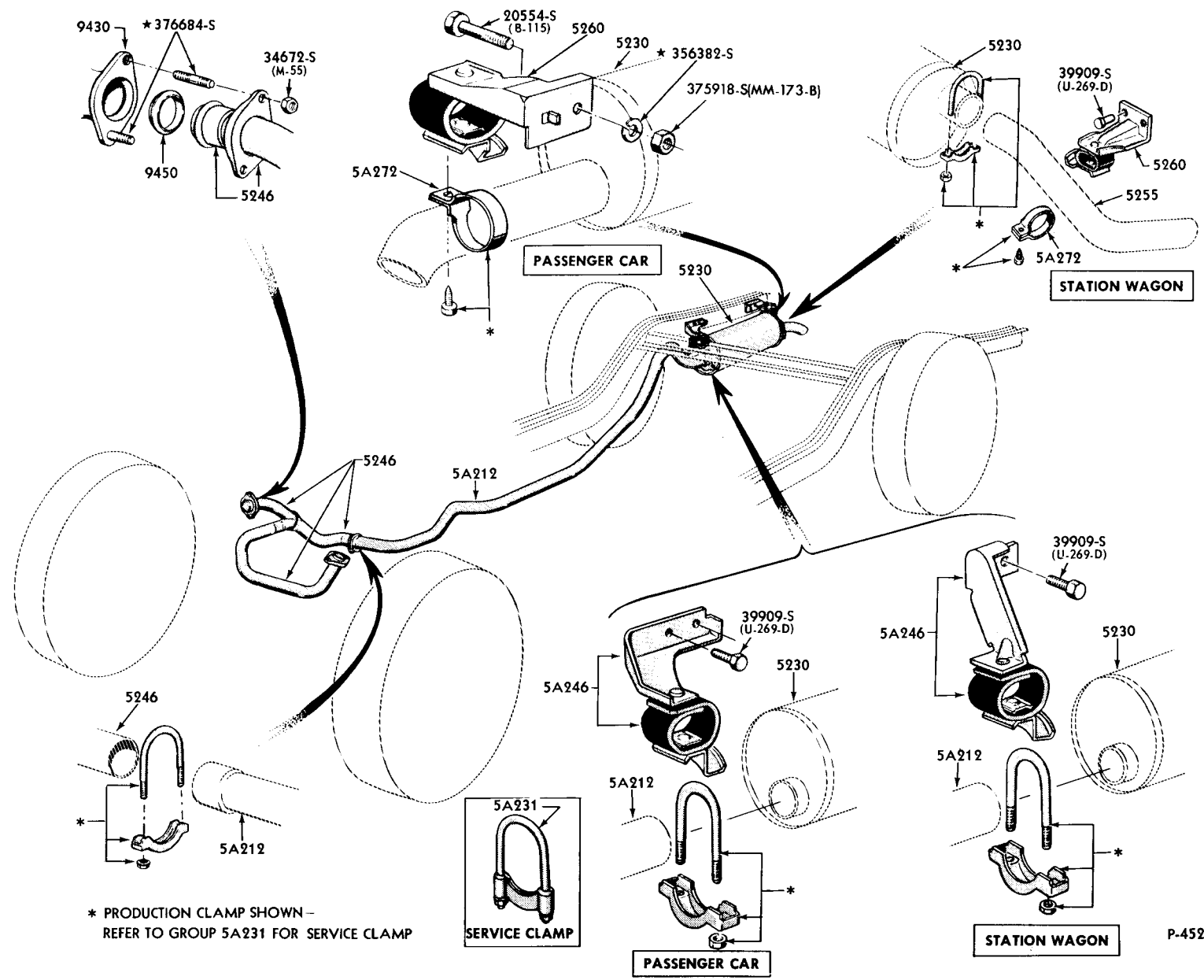


\* REFER TO SERVICE CLAMP INSTALLATION P-3223

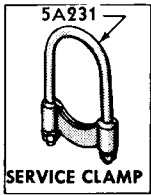


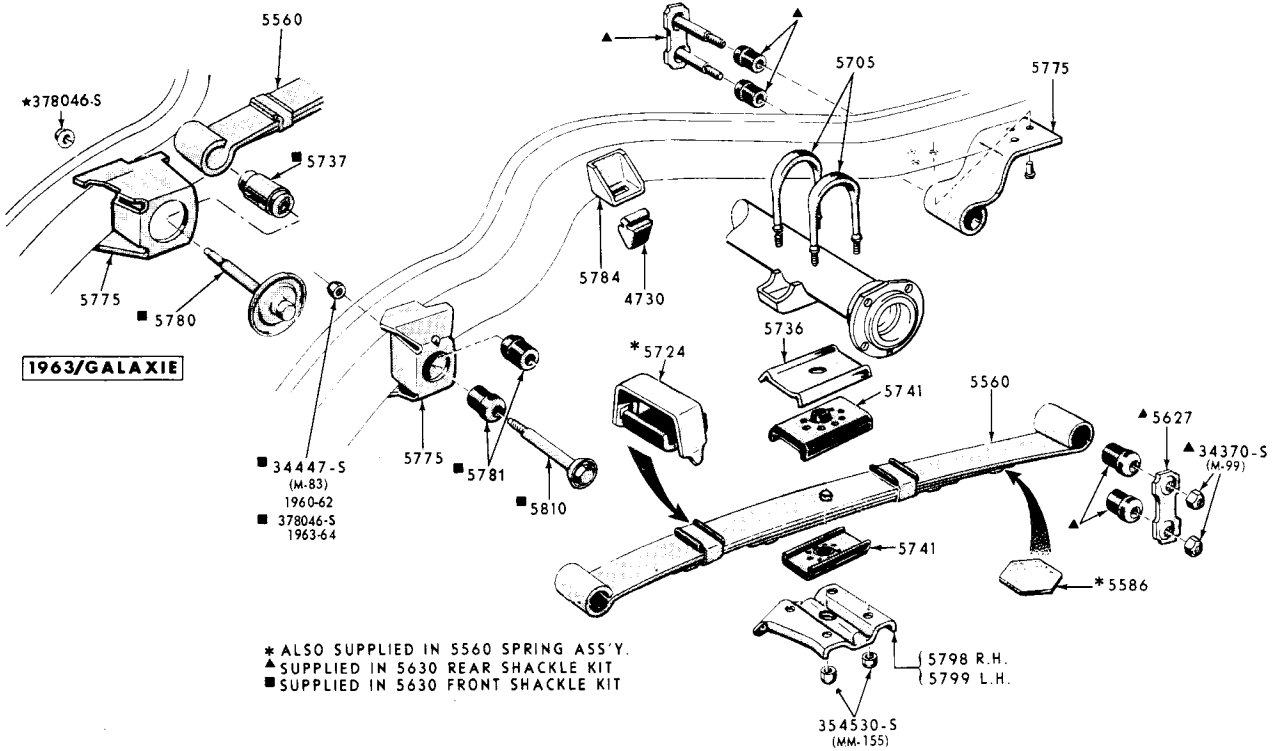
\*PRODUCTION CLAMP SHOWN—REFER TO GROUP 5A231 FOR SERVICE CLAMP

1964 EXHAUST SYSTEM-SINGLE (FALCON 8 CYLINDER)



\* PRODUCTION CLAMP - REFER TO GROUP 5A231 FOR SERVICE CLAMP

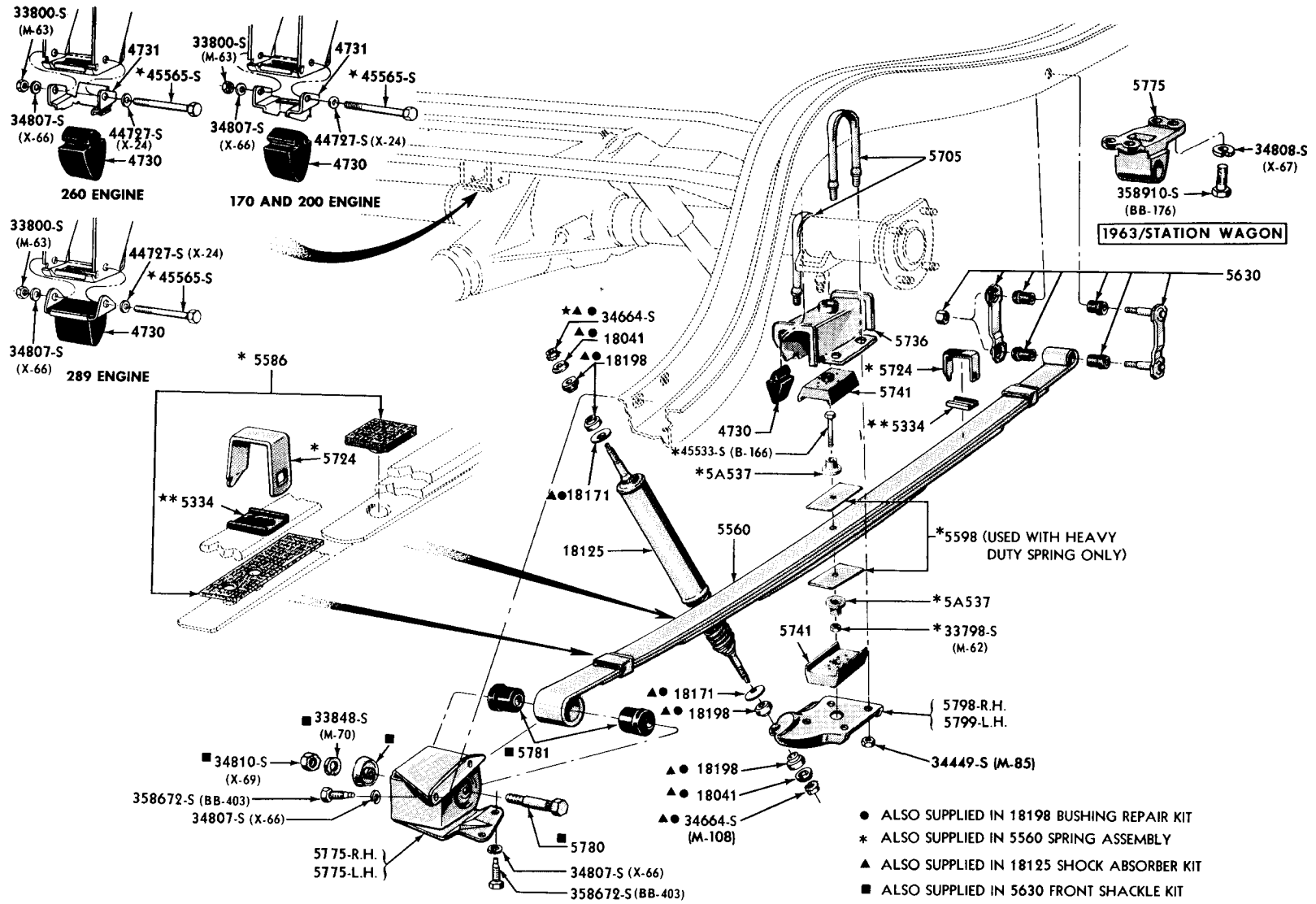




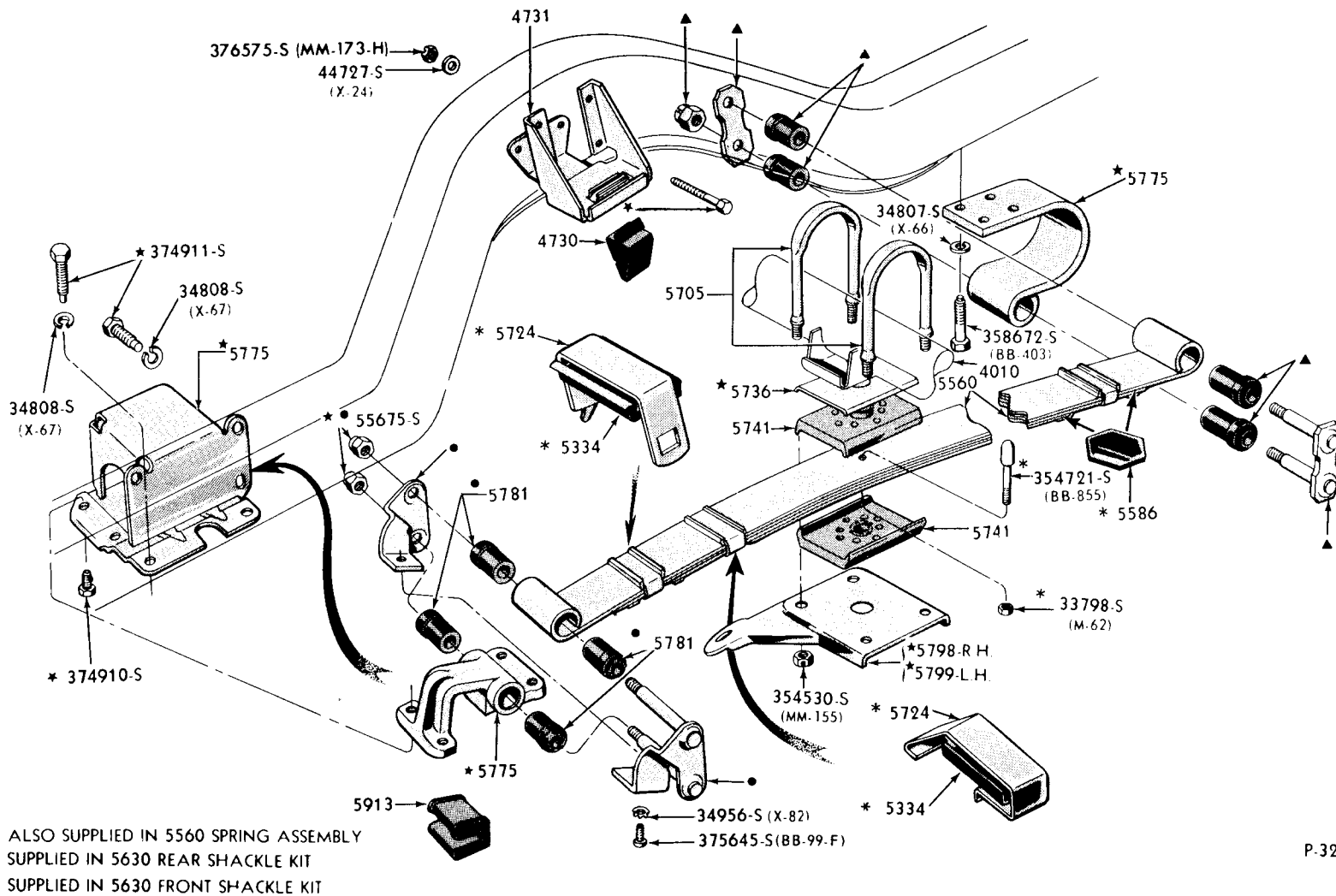
P-2985

1960/64 REAR SUSPENSION (FORD)

1962 / REAR SUSPENSION (FAIRLANE)

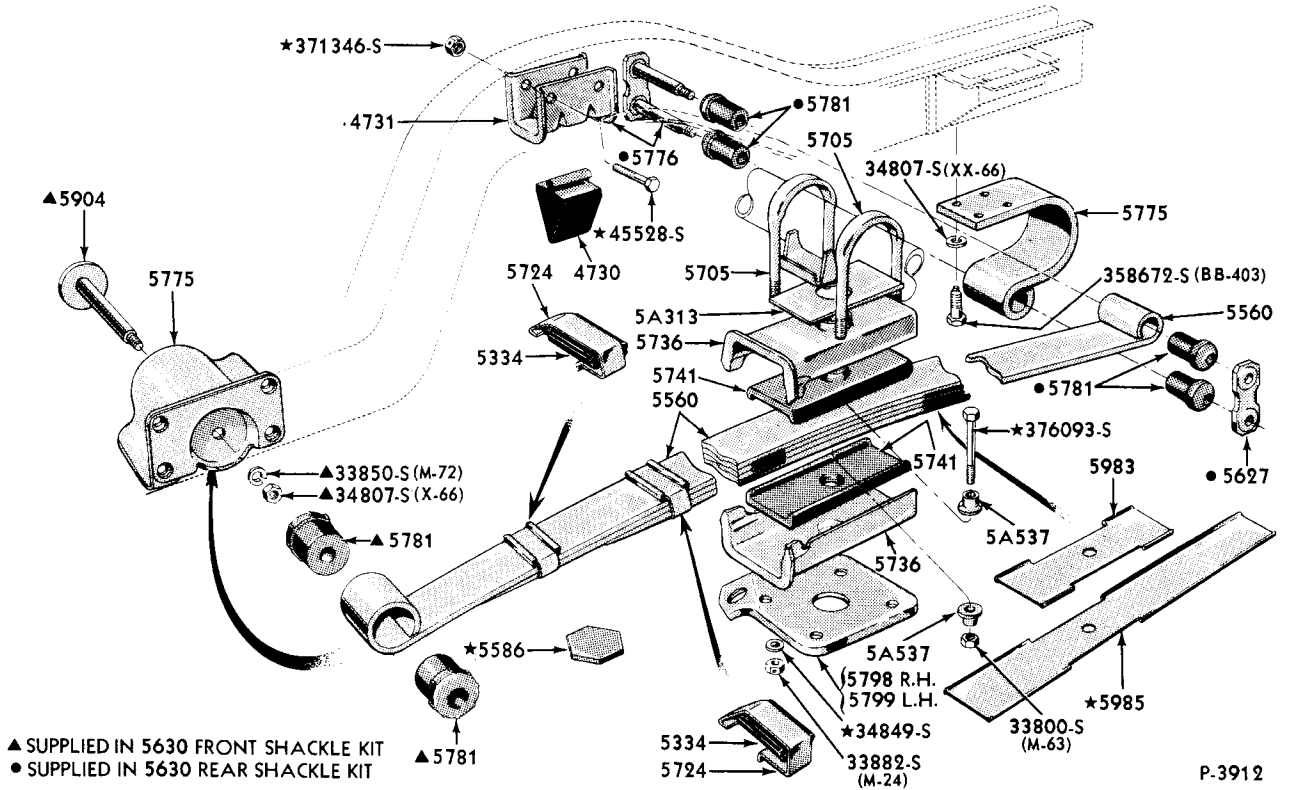


1961 REAR SUSPENSION (THUNDERBIRD)



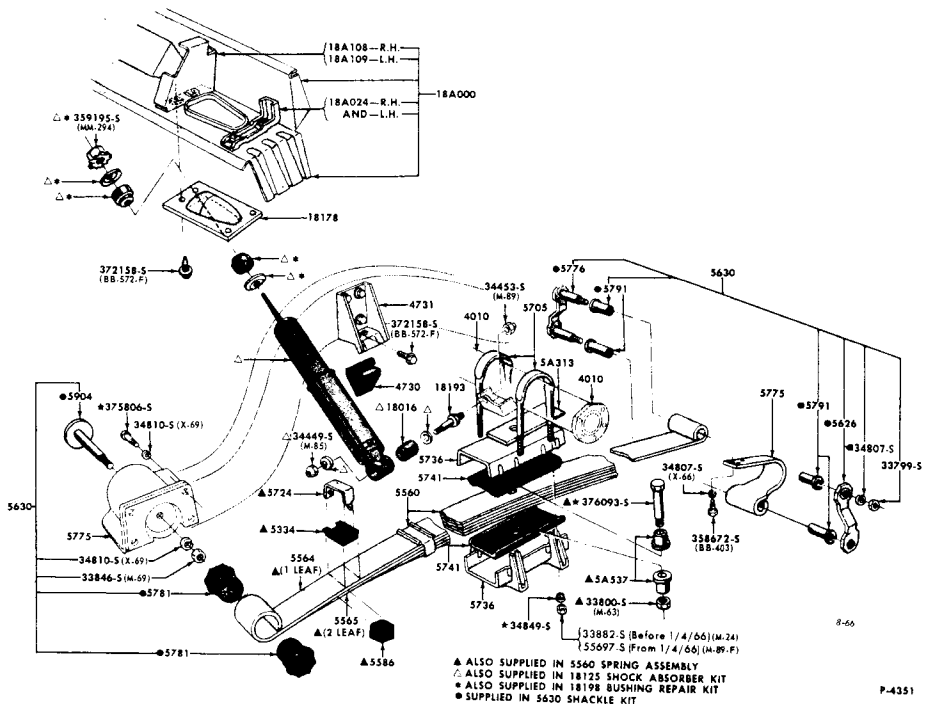
- \* ALSO SUPPLIED IN 5560 SPRING ASSEMBLY
- ▲ SUPPLIED IN 5630 REAR SHACKLE KIT
- SUPPLIED IN 5630 FRONT SHACKLE KIT

P-3277



P-3912

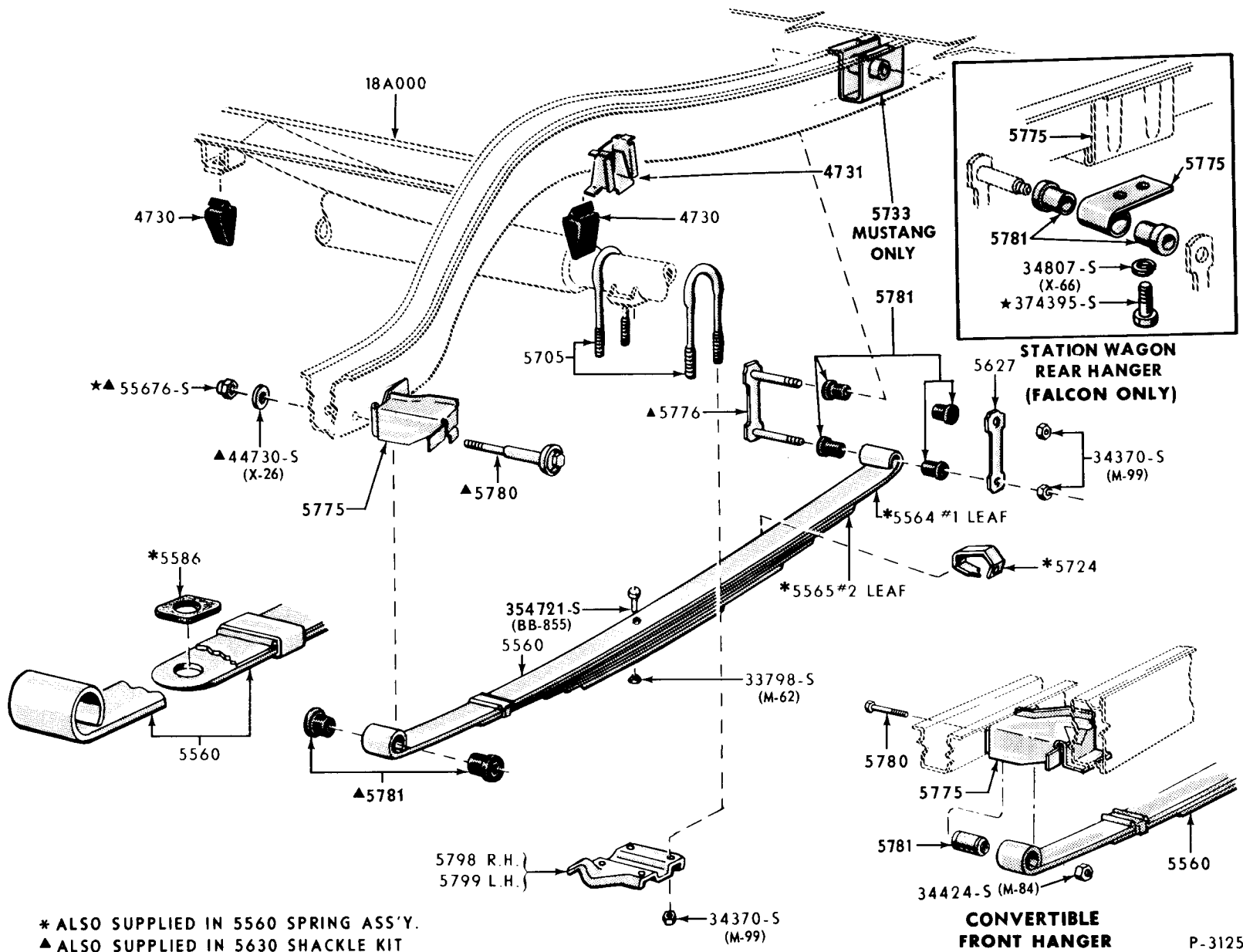
1962/63 REAR SUSPENSION (THUNDERBIRD)



P-4351

1964/ REAR SUSPENSION (THUNDERBIRD)



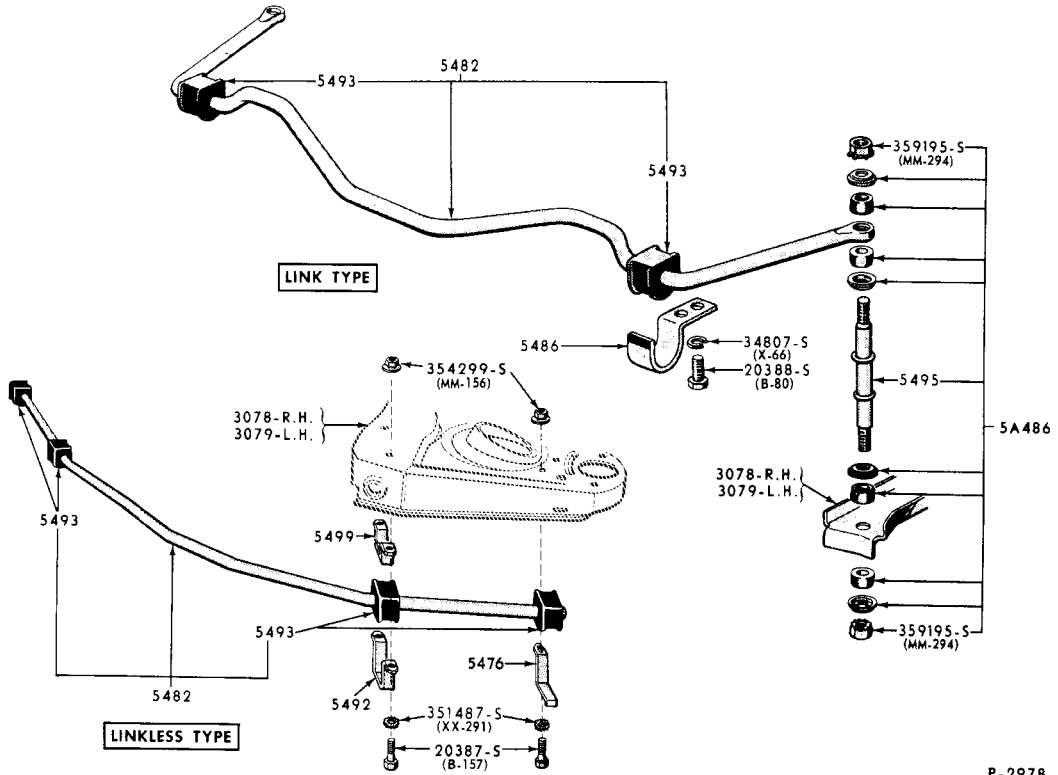


\* ALSO SUPPLIED IN 5560 SPRING ASS'Y.  
 ▲ ALSO SUPPLIED IN 5630 SHACKLE KIT

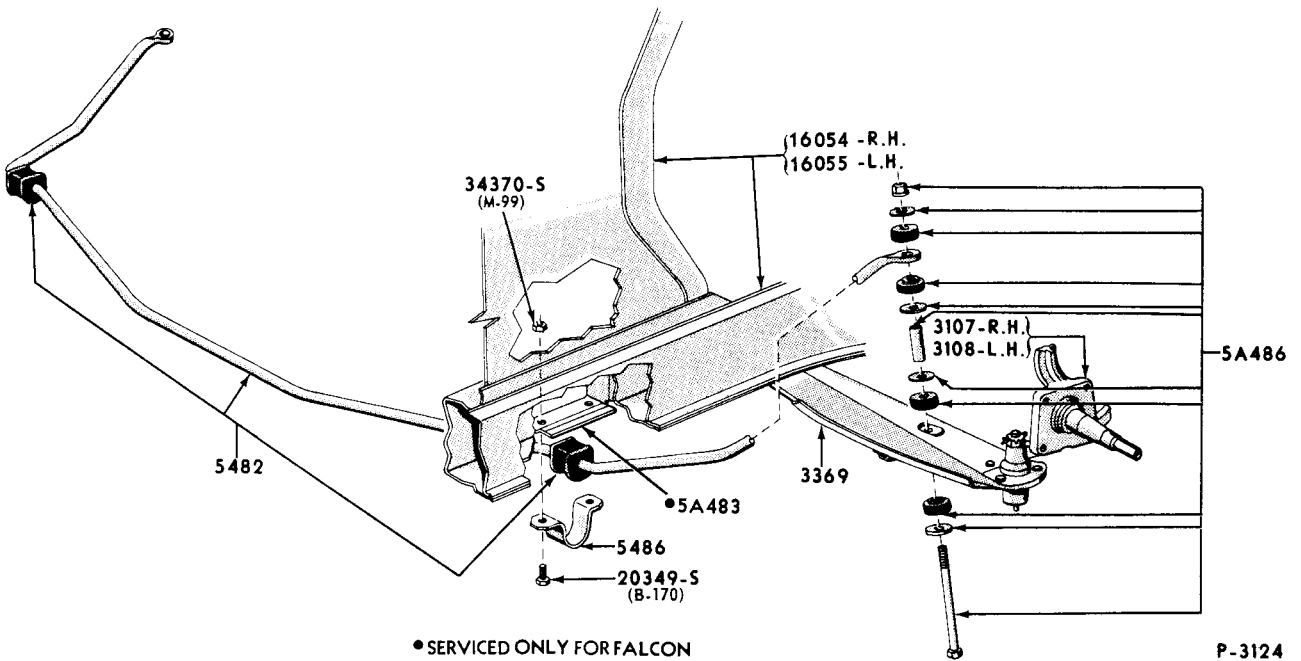
**CONVERTIBLE FRONT HANGER**

**STATION WAGON REAR HANGER (FALCON ONLY)**

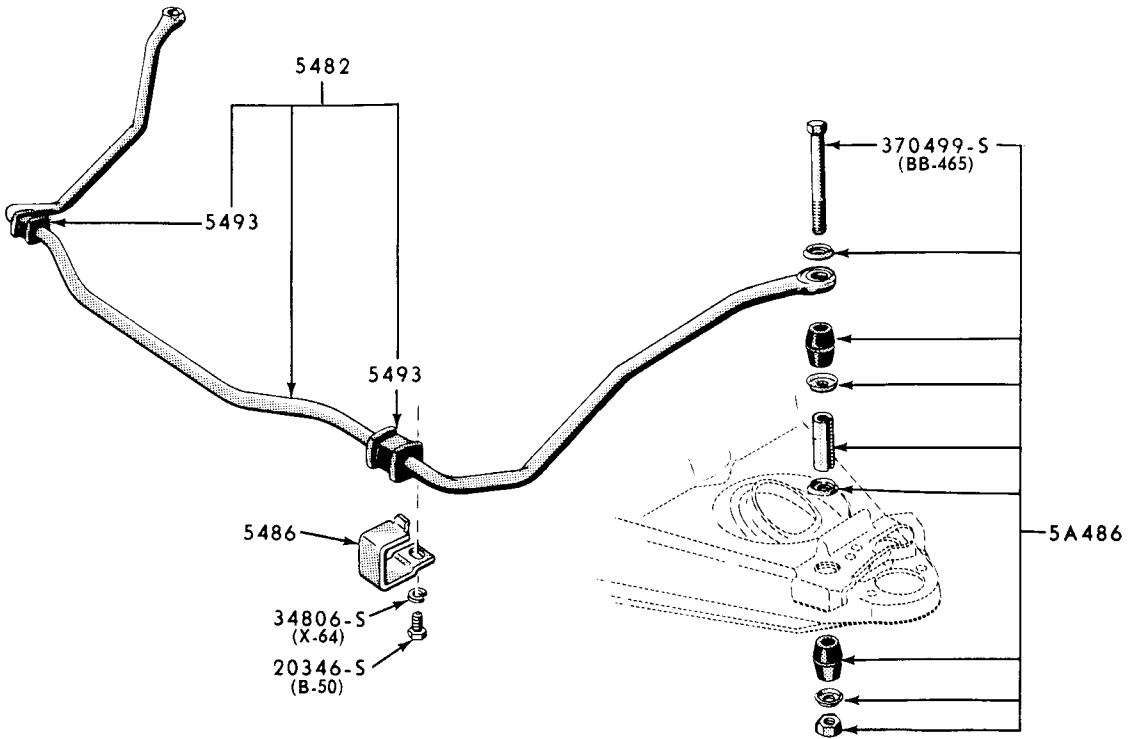
**5733 MUSTANG ONLY**



1960/64 STABILIZER (FORD)

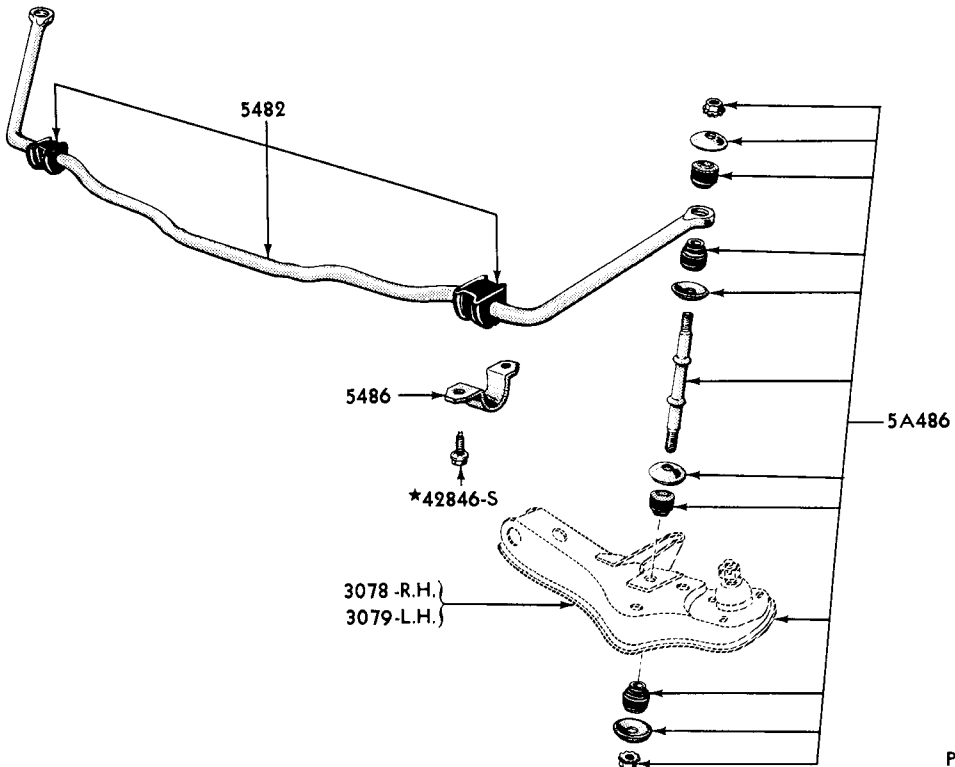


1960/ STABILIZER (FAIRLANE, FALCON)-TYPICAL



P-3092

1960 STABILIZER (THUNDERBIRD)-TYPICAL



P-3275

1961/ STABILIZER BAR (THUNDERBIRD)

