

INDEX

BELOW IS A LIST OF THE MAJOR GROUPS AND THE ORDER IN WHICH THEY ARE LISTED IN THIS INDEX.

WHEELS AND RELATED PARTS
SPARE WHEEL CARRIERS
BRAKE MASTER CYLINDERS

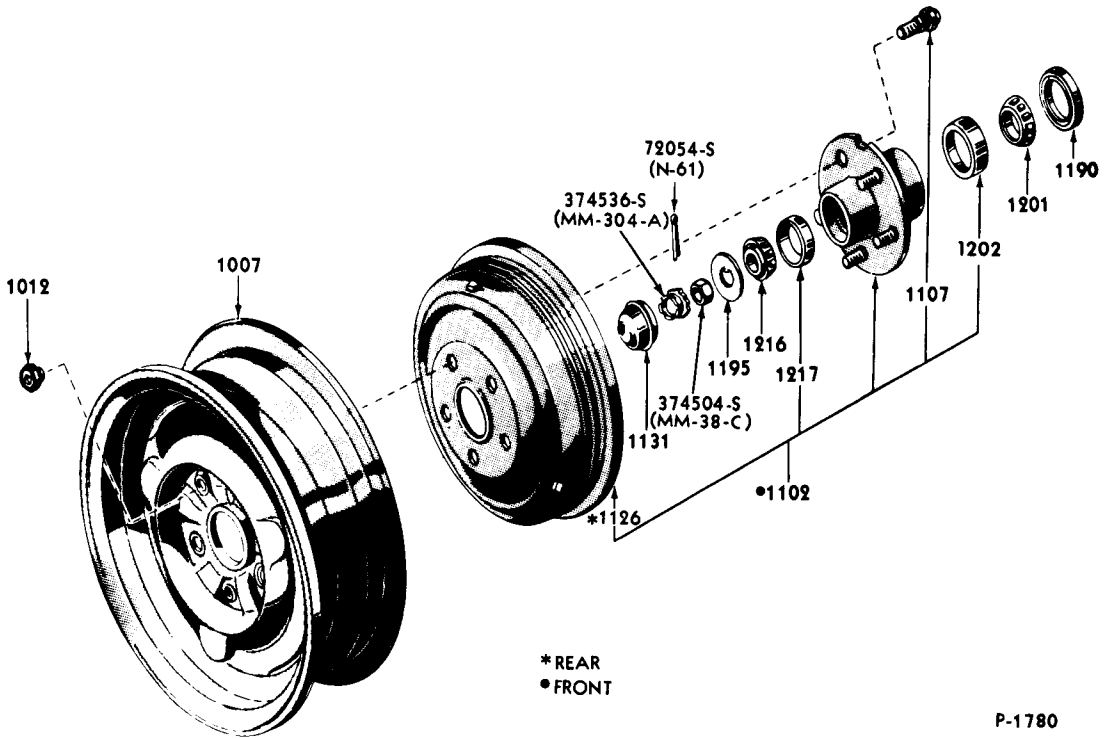
BRAKE WHEEL CYLINDERS
BRAKE SYSTEMS
FRONT AND REAR BRAKES

POWER BRAKE BOOSTERS
POWER BRAKE BOOSTER INSTALLATION
BRAKE AND CLUTCH PEDALS

YEAR	TITLE	ILLUS. NO.	SECTION	PAGE
WHEELS and RELATED PARTS				
1960	Front and Rear Wheel, Hub, Bearing, etc. (Ford, Fairlane & Thunderbird)-Typical	P-1780	10	30
1960/	Front and Rear Wheel, Hub, Bearings, etc. (Falcon)-Typical	P-3118	10	30
1960	Hub Cap and Wheel Cover -Typical	P-2988	10	31
1961/	Hub Cap and Wheel Cover (All Models) - Refer to Text Group 1130			
SPARE WHEEL CARRIERS				
1960	Spare Wheel Carrier (Ford) - Exterior	P-3178	10	32
1961	Spare Wheel Carrier (Ford)-Exterior	P-3671	10	33
1961/64	Spare Wheel and Jack Stowage (Ford)	P-3706	10	34
1962/	Spare Wheel and Jack Stowage (Fairlane-except Station Wagon)	P-3705	10	34
1963/	Spare Wheel and Jack Stowage (Fairlane Station Wagon)	P-4824	10	35
1960	Spare Wheel Carrier (Thunderbird)-Exterior	P-2900	10	36
1961/63	Spare Wheel and Jack Stowage (Thunderbird)	P-4598	10	37
1964/	Spare Wheel and Jack Stowage (Thunderbird)	P-4597	10	37
1960/	Spare Wheel and Jack Stowage (Falcon)	P-3916	10	38
BRAKE MASTER CYLINDERS				
1960/	Brake Master Cylinder (except 1960 Thunderbird) -Typical	P-3098	20	39
1960	Brake Master Cylinder (Thunderbird)	P-1786	20	39
BRAKE WHEEL CYLINDERS				
1960/	Brake Cylinder (Front)-(Ford)	P-2283	20	40
1960/	Brake Cylinder (Rear)-(Ford)	P-2284	20	40
1960/	Brake Cylinders (Front and Rear) (Thunderbird & Fairlane)	P-3906	20	40
1960/	Brake Cylinders (Front and Rear) (Falcon)	P-2990	20	41
BRAKE SYSTEMS				
1960/64	Brake System (Ford)	P-3099	20	42
1962/	Brake System (Fairlane)	P-3678	20	43
1960	Brake System (Thunderbird)	P-3104	20	44
1961/63	Brake System (Thunderbird)	P-3245	20	45
1964/	Brake System (Thunderbird)	P-4240	20	46
1960/	Brake System (Falcon)	P-3119	20	47
FRONT and REAR BRAKES				
1960	Front and Rear Brakes (except Falcon)-Typical	P-2164	20	48
1961/	Front & Rear Brakes (Self Adjusting) (Ford & Thunderbird)-Typical	P-3380	20	49
1962/	Front & Rear Brakes (Fairlane)	P-3703	20	50
1960/62	Front & Rear Brakes (Falcon)	P-2989	20	51
1963/	Front & Rear Brakes (Falcon)	P-3703	20	50

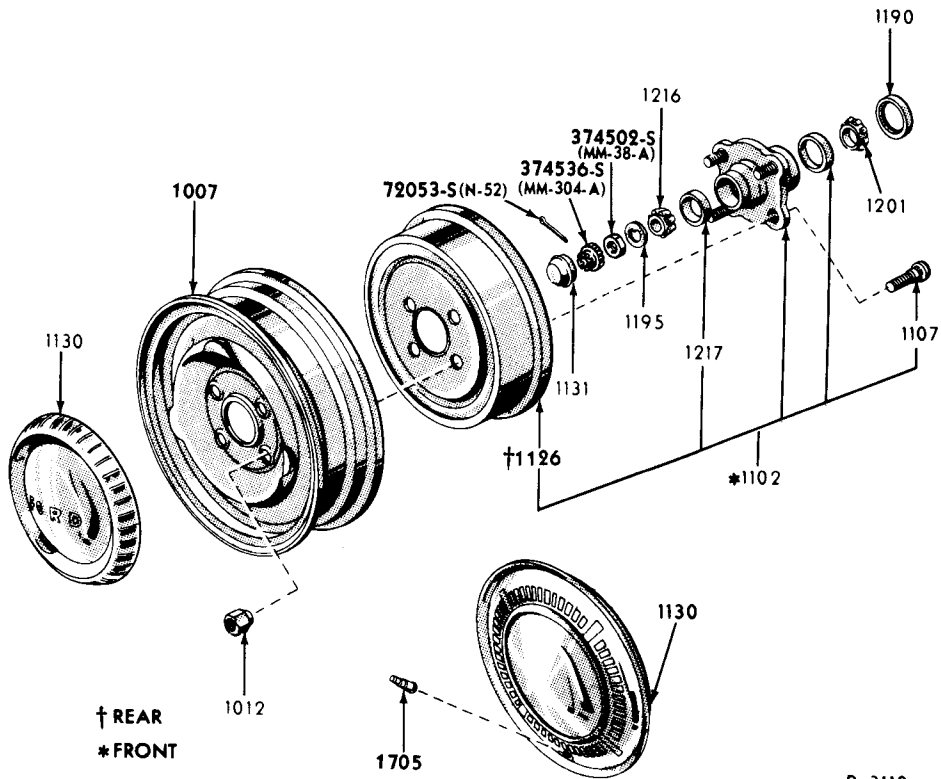
INDEX

YEAR	TITLE	ILLUS. NO.	SECTION	PAGE
POWER BRAKE BOOSTERS				
1960	Power Brake Booster (Ford-6 Cylinder)	P-2210	23	52
1960/61	Power Brake Booster -Ford & Thunderbird (Diaphragm Type) (Bendix)	P-3170	23	53
1961/63	Power Brake Booster (Ford & Thunderbird) (Midland Ross)	P-3589	23	54
1962/63	Power Brake Booster (Ford with S/T & Fairlane)(Midland Ross)	P-3768	23	55
1964/	Power Brake Booster (Falcon) (Bendix)	P-4590	23	56
1964	Power Brake Booster (Ford, Fairlane & Thunderbird) (Midland-Ross)	P-4894	23	56
POWER BRAKE BOOSTER INSTALLATION				
1960	Power Brake Booster Installation (Ford - 6 Cylinder)	P-2976	23	57
1960	Power Brake Booster Installation (Ford 8 Cylinder)	P-3134	23	58
1961/64	Power Brake Booster Installation (Ford)(Midland Ross)	P-3604	23	59
1962/	Power Brake Booster Installation (Fairlane)	P-3678	20	43
1961	Power Brake Booster Installation (Thunderbird) (Bendix)	P-3248	23	60
1961/63	Power Brake Booster Installation (Thunderbird)(Midland-Ross)	P-3603	23	61
1964/	Power Brake Booster Installation (Thunderbird)	P-4240	20	46
BRAKE and CLUTCH PEDALS				
1960	Brake Pedal and Related Parts (Fordomatic)(Ford)	P-2973	24	62
1960	Brake & Clutch Pedals & Related Parts (manual gear shift) (Ford)	P-2972	24	62
1963/64	Brake & Clutch Pedals & Related Parts (Ford)	P-4174	24	63
1962/	Brake & Clutch Pedals & Related Parts (Standard & Automatic Transmissions) (Fairlane)	P-3674	24	64
1960	Brake & Clutch Pedals & Related Parts (All Transmissions) (Thunderbird)	P-3079	24	64
1960/	Brake & Clutch Pedals and Related Parts (manual gear shift) (Falcon)	P-3130	24	65
1960/	Brake Pedal and Related Parts (Fordomatic) (Falcon)	P-3131	24	65



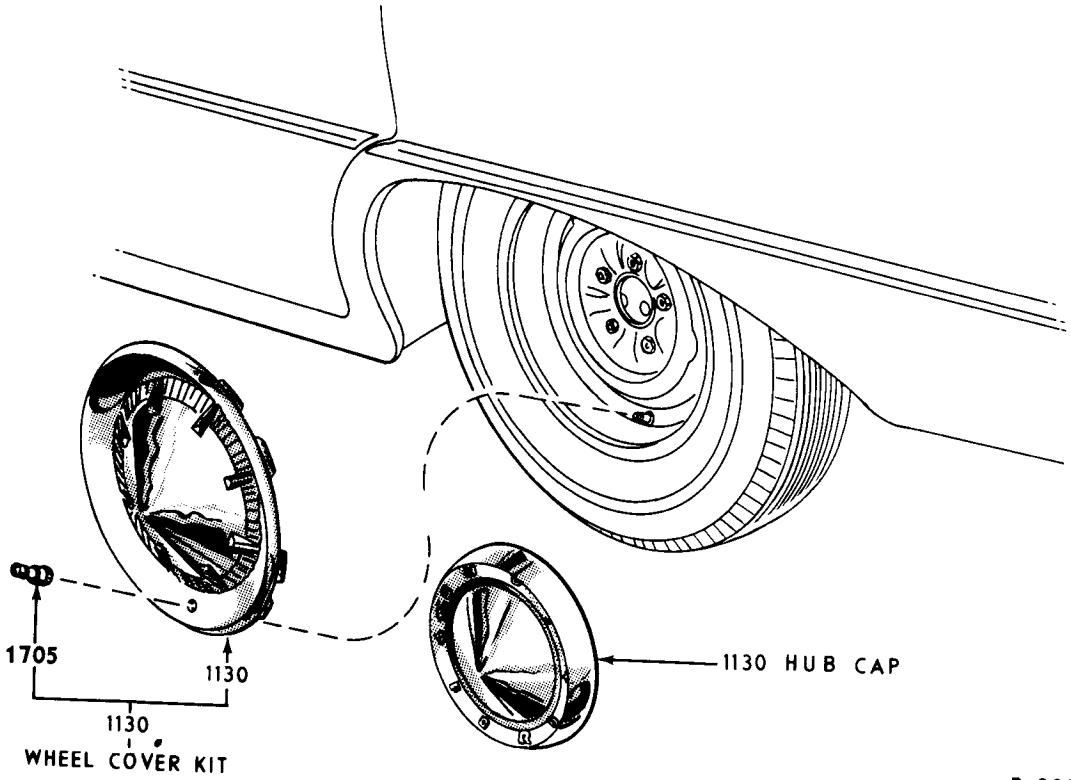
P-1780

1960/ FRONT and REAR WHEEL, HUB, BEARING, ETC. (FORD, FAIRLANE & THUNDERBIRD) - TYPICAL



P-3118

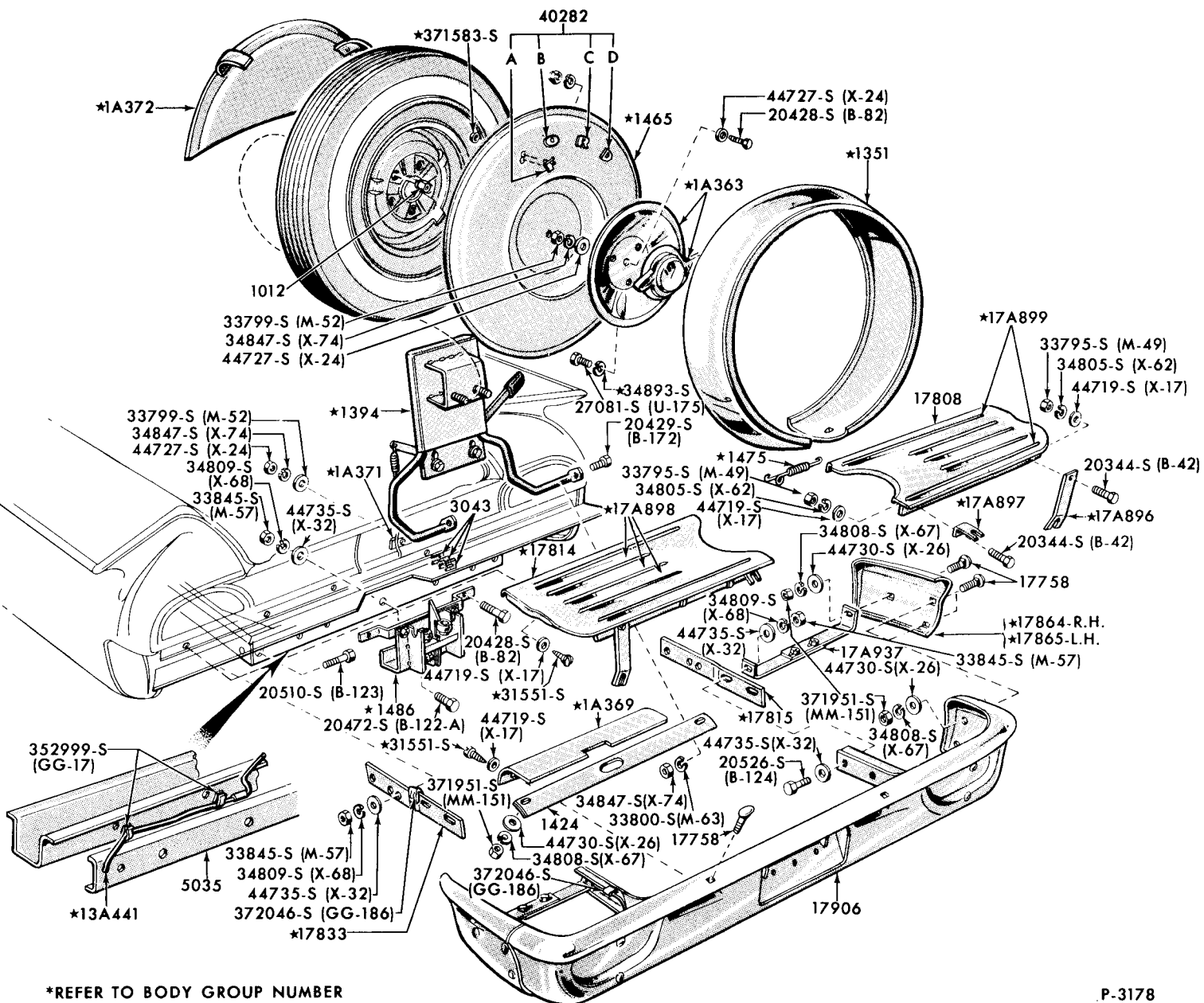
1960/ FRONT and REAR WHEEL, HUB, BEARINGS, ETC. (FALCON) - TYPICAL



P-2988

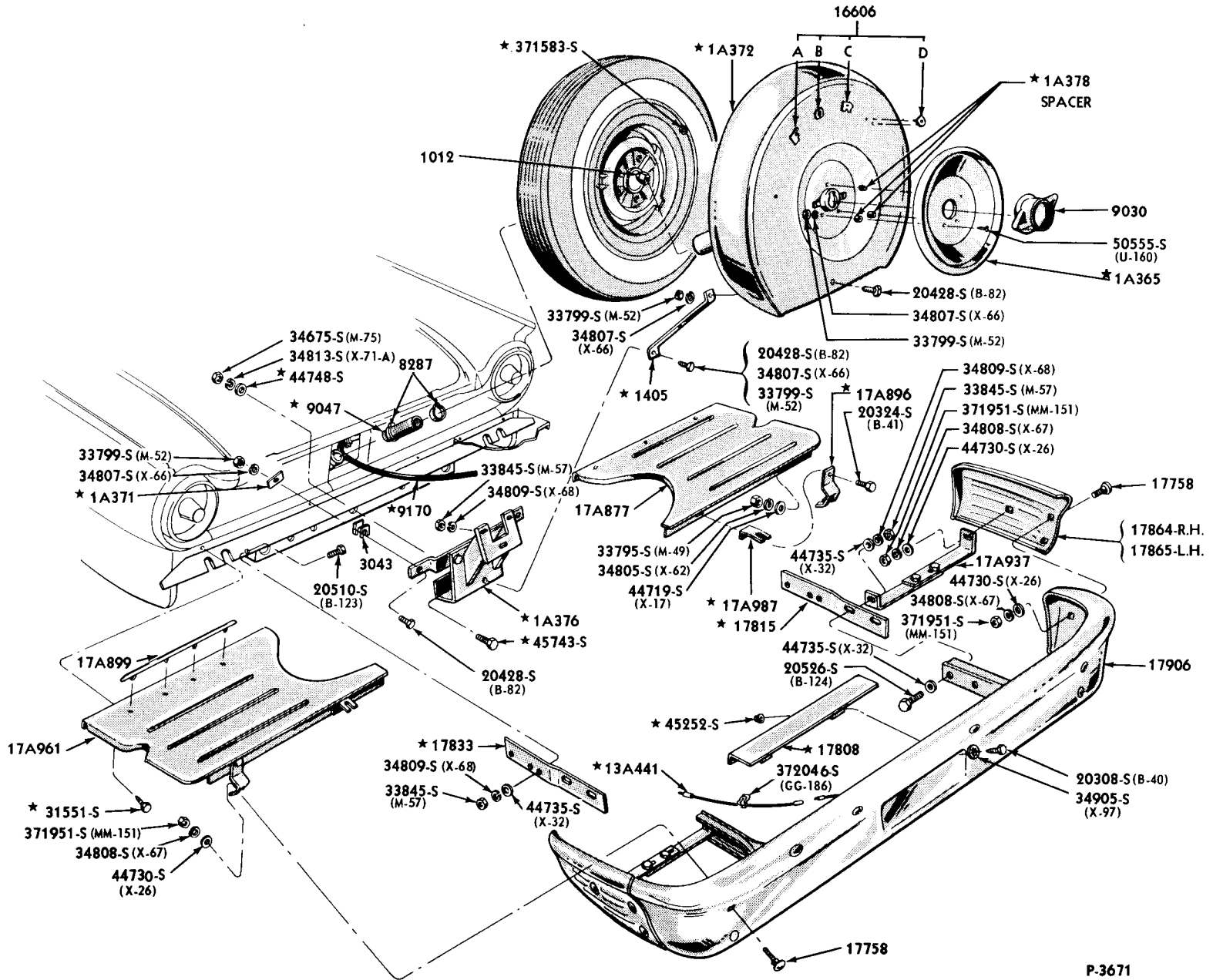
1960 HUB CAP & WHEEL COVER - TYPICAL

1960 SPARE WHEEL CARRIER (FORD) - EXTERIOR



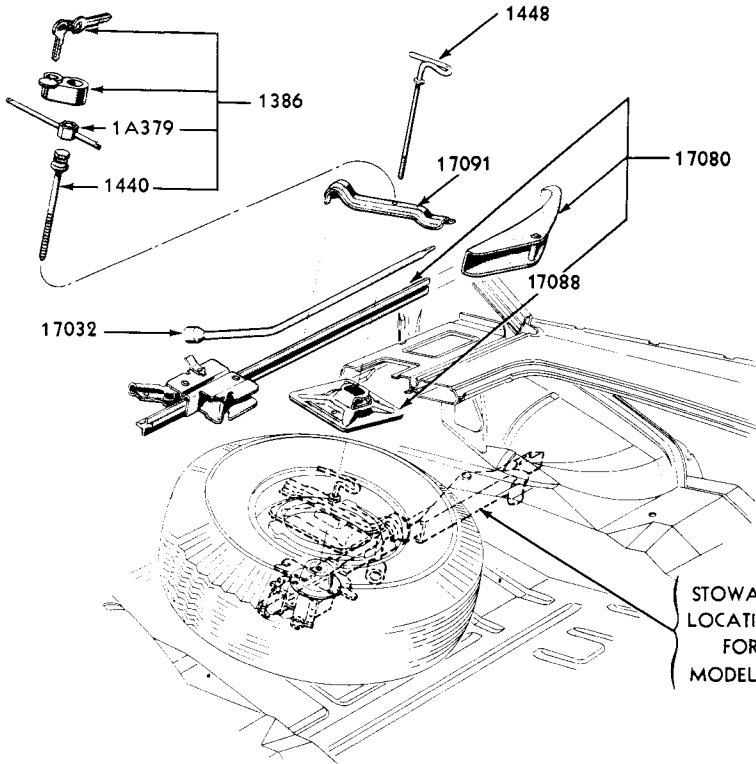
*REFER TO BODY GROUP NUMBER

P-3178

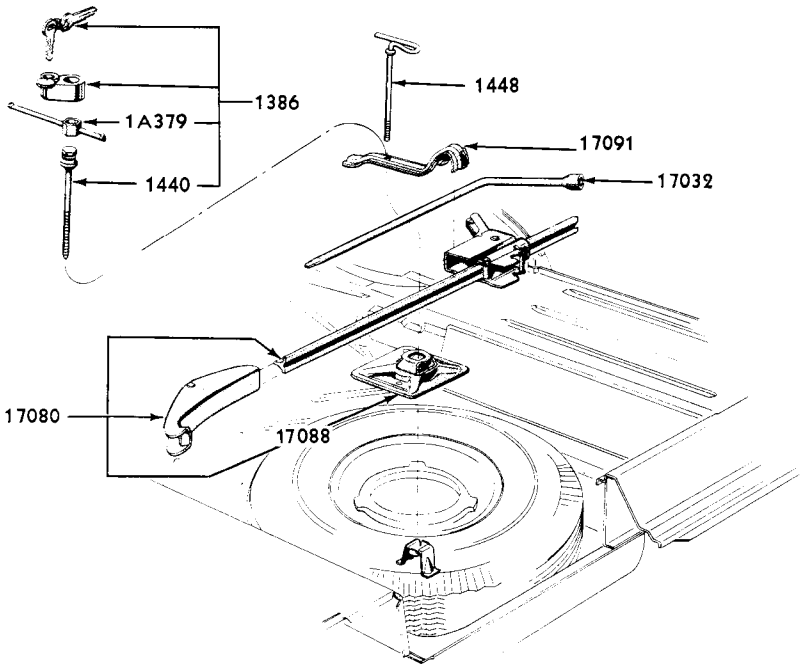


**ILLUSTRATION
SECTION 10**

FORD CAR PARTS

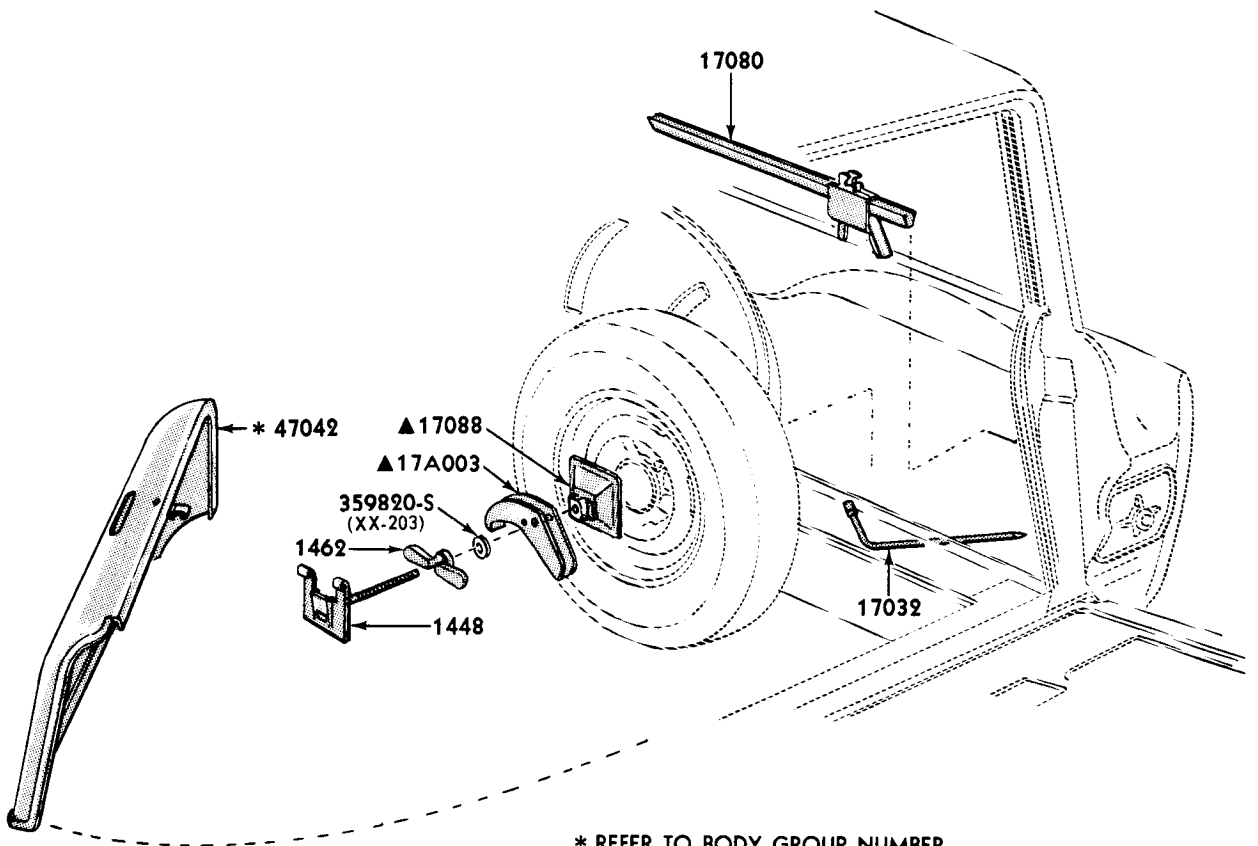


PASSENGER CAR



STATION WAGON

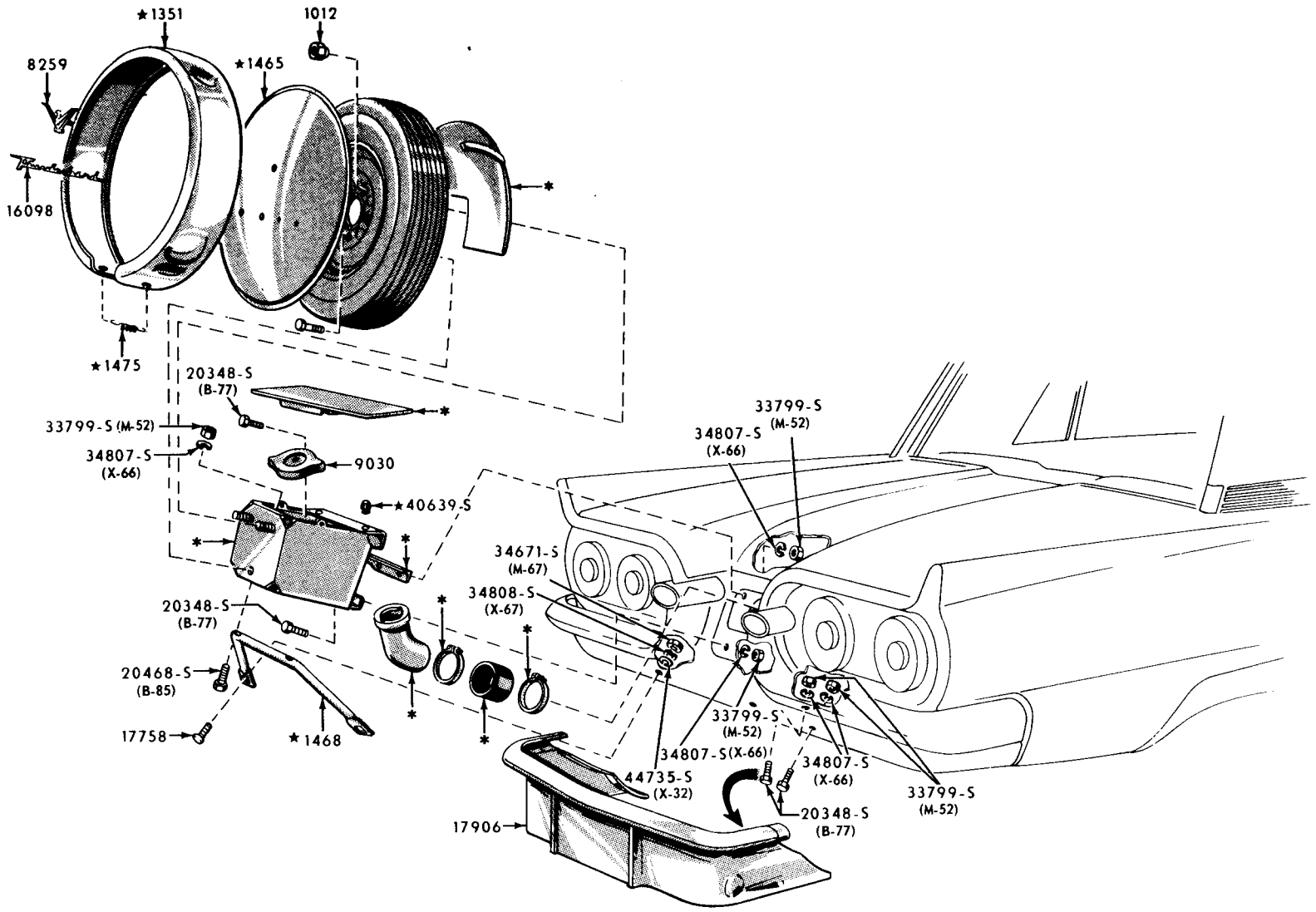
P-3706



* REFER TO BODY GROUP NUMBER
▲ ALSO SUPPLIED IN 17080 JACK ASSEMBLY

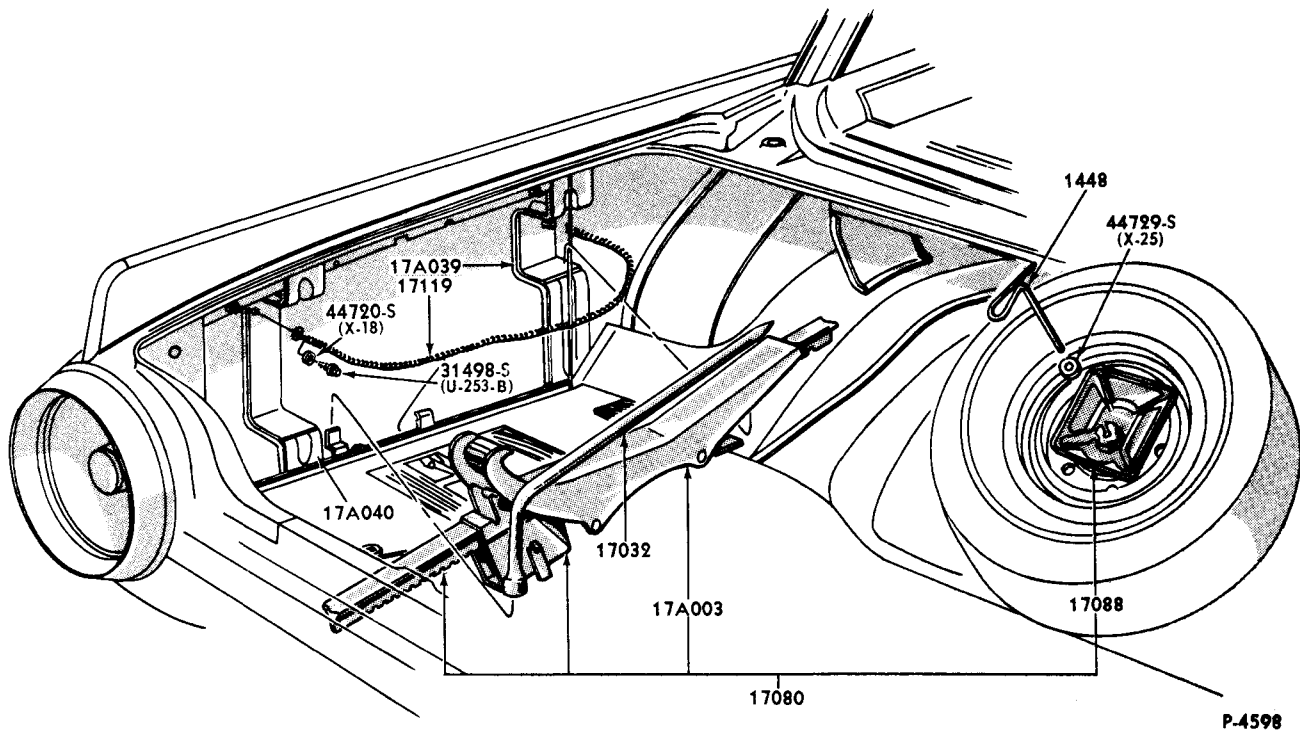
P-4824

1963/ SPARE WHEEL & JACK STOWAGE (FAIRLANE STATION WAGON)

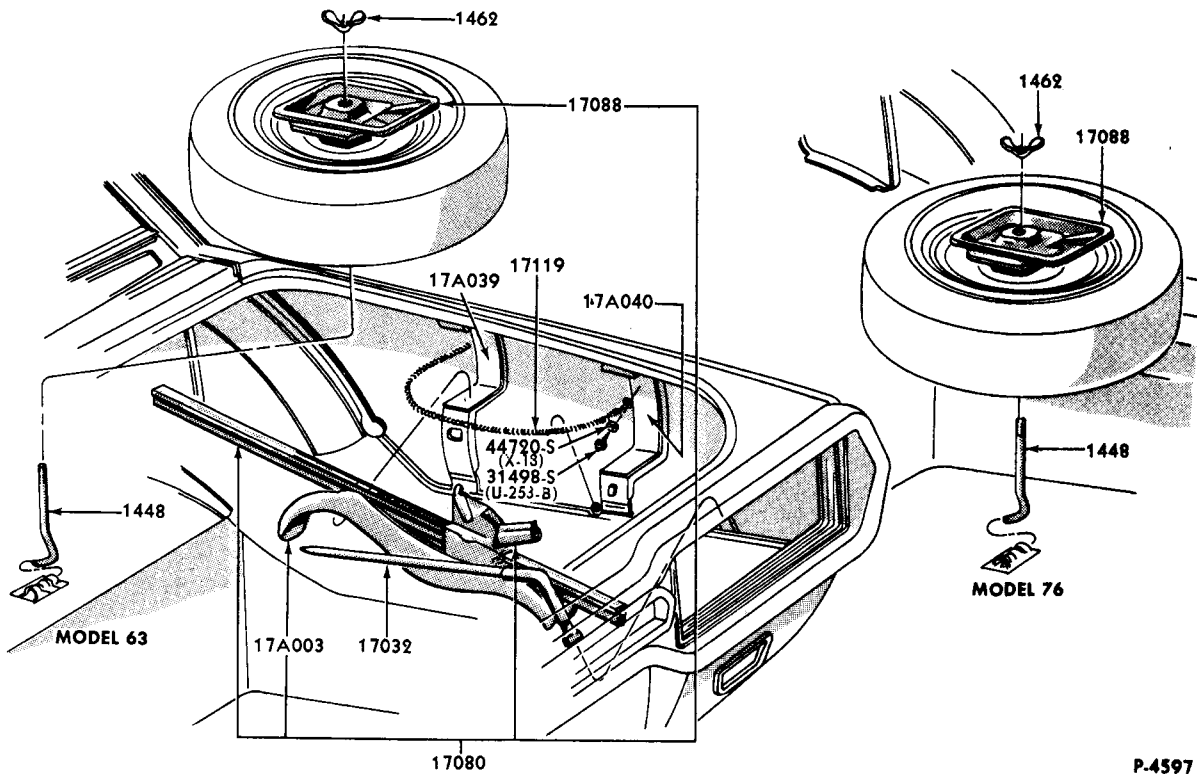


1960 SPARE WHEEL CARRIER (THUNDERBIRD) - EXTERIOR

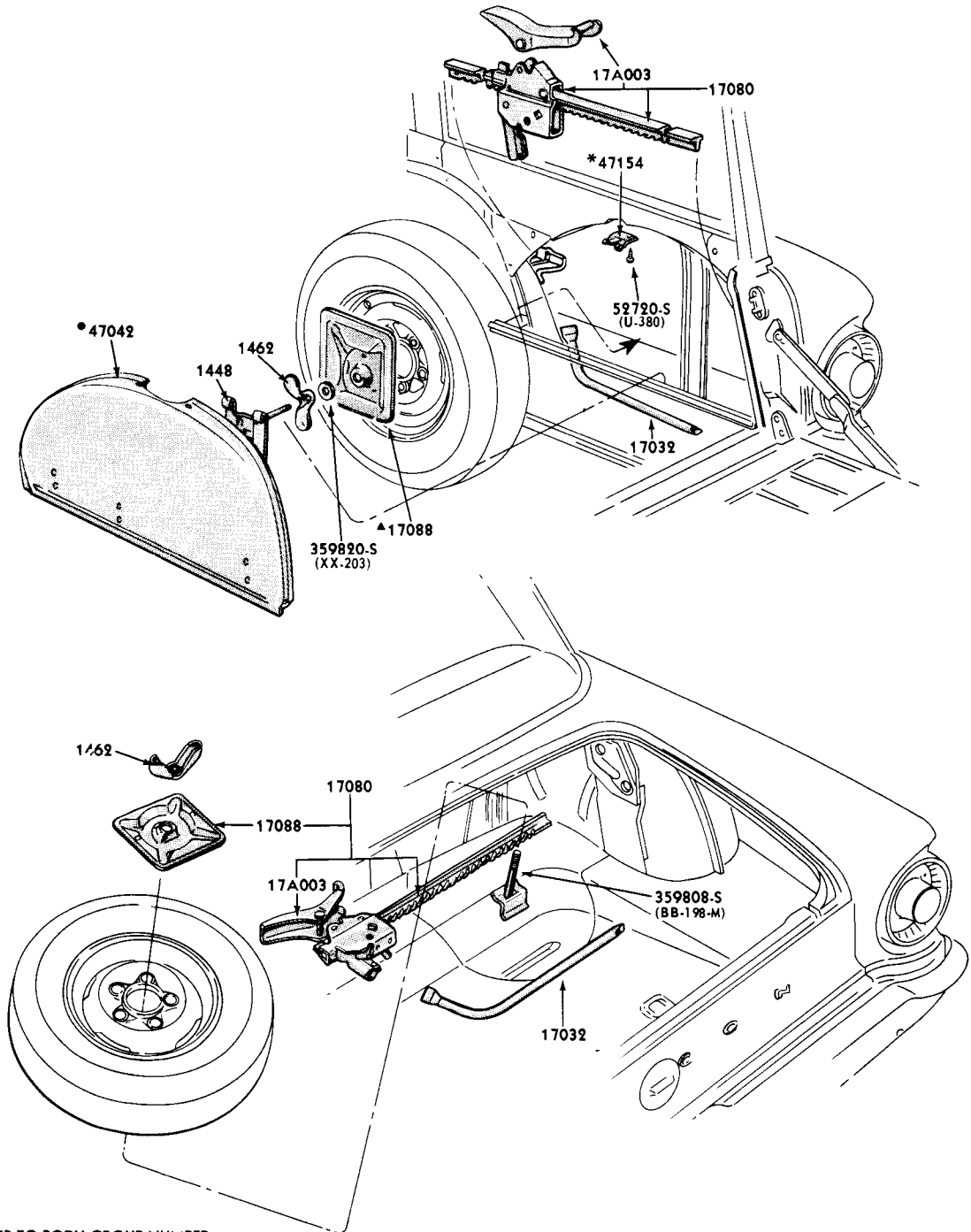
*SUPPLIED ONLY IN 1400 SPARE WHEEL CARRIER KIT



1961/63 SPARE WHEEL and JACK STOWAGE (THUNDERBIRD)



1964/ SPARE WHEEL and JACK STOWAGE (THUNDERBIRD)

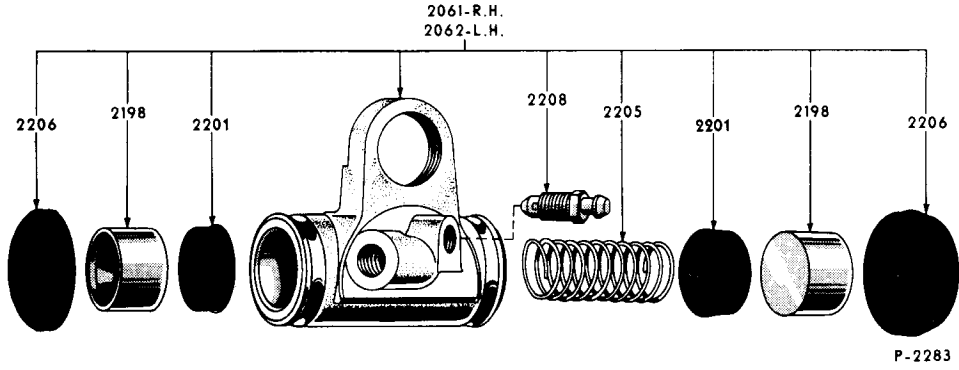
**ILLUSTRATION
SECTION 10**
FORD CAR PARTS


P-3916

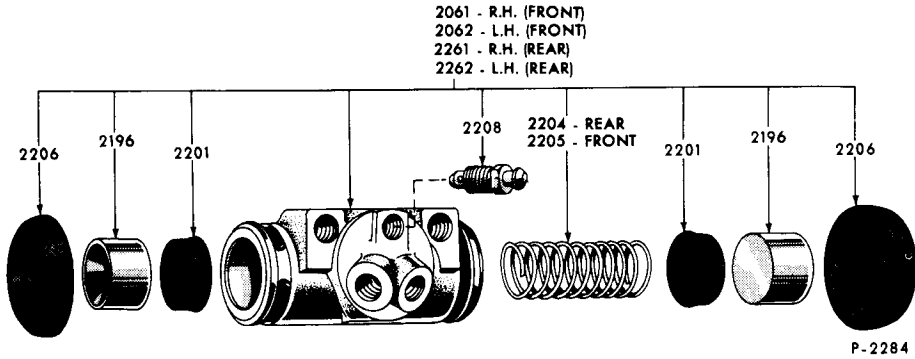
- * REFER TO BODY GROUP NUMBER
- ▲ ALSO SUPPLIED IN 17080 ASS'Y.
- REFER TO GROUP IN SOFT TRIM SECTION

FORD CAR PARTS

ILLUSTRATION SECTION 20

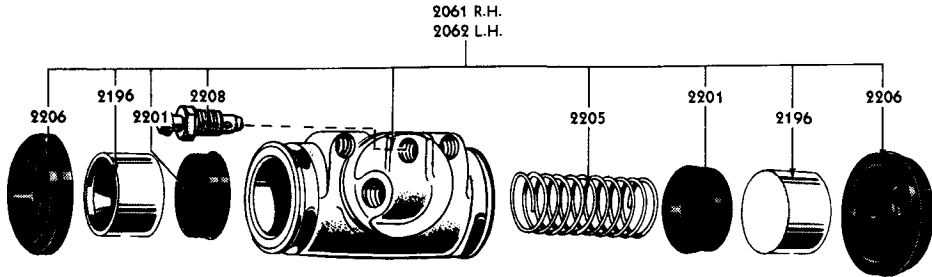


FRONT

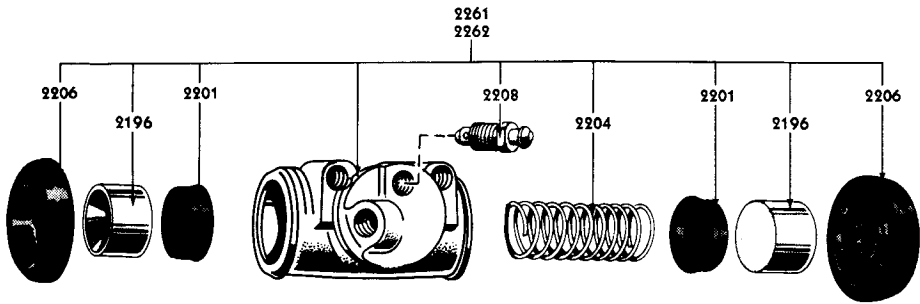


REAR

1960/ BRAKE CYLINDER (FORD)



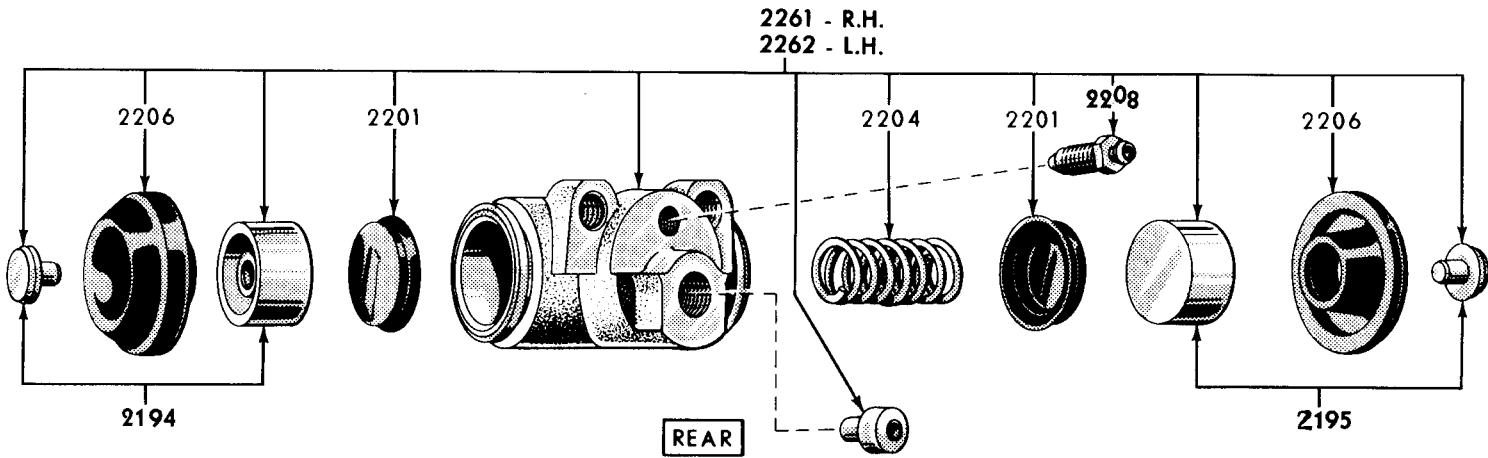
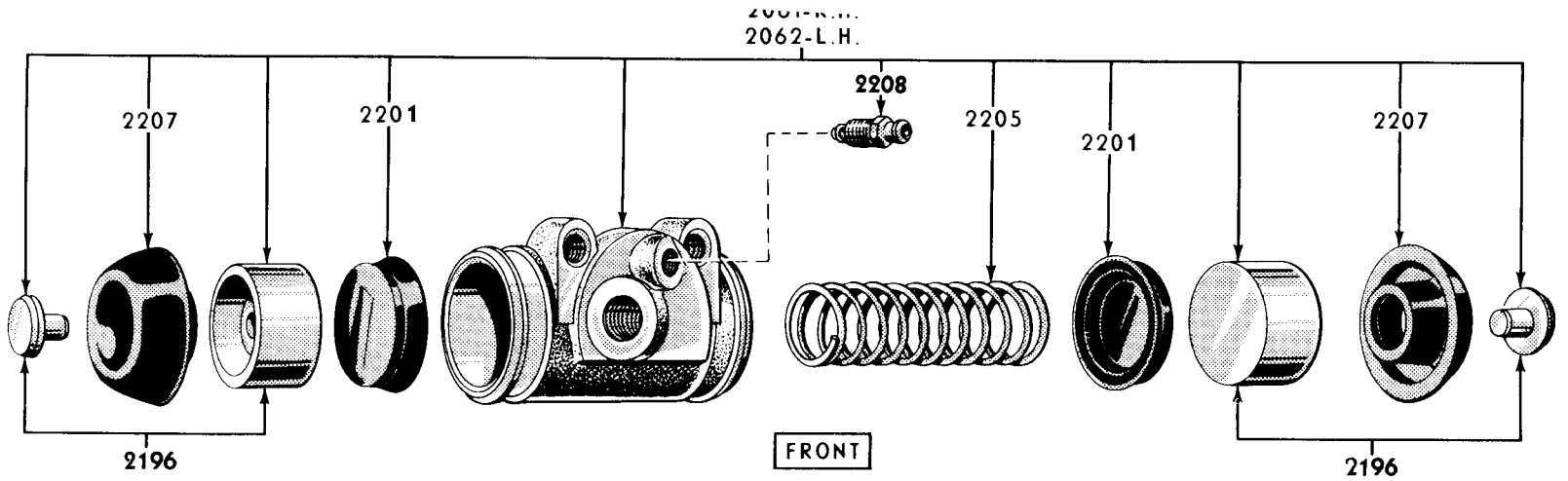
FRONT



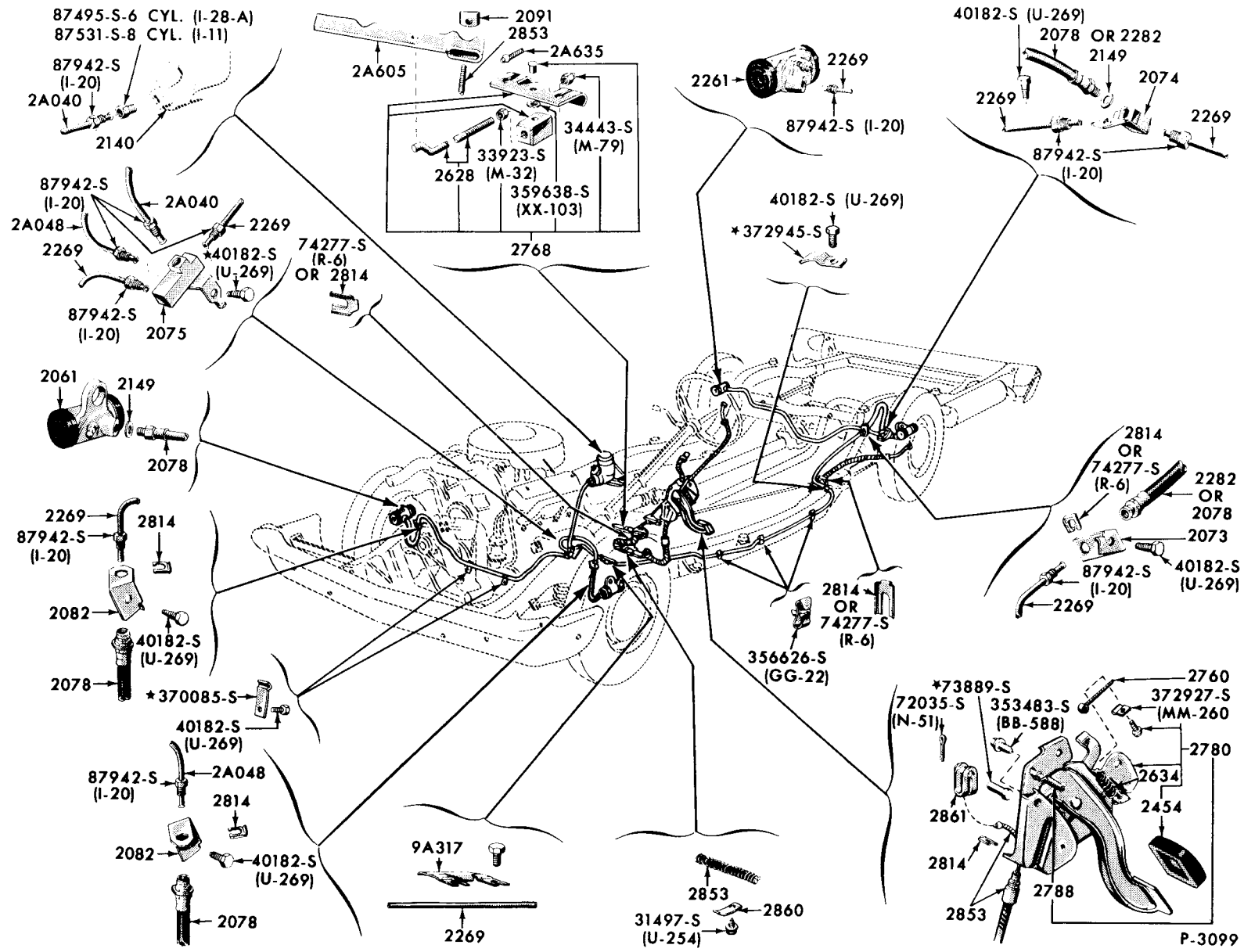
REAR

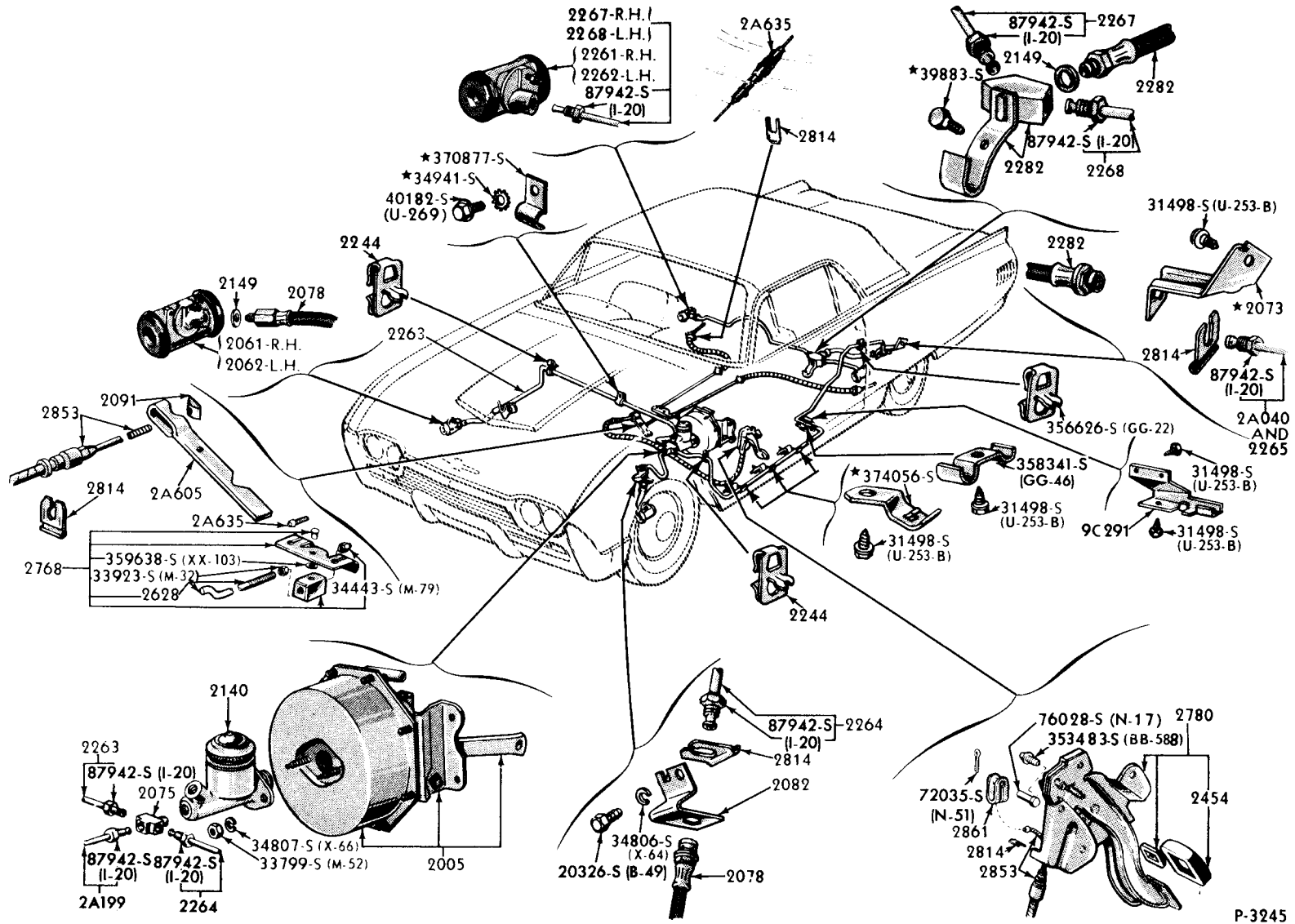
P-3906

1960/ BRAKE CYLINDER (THUNDERBIRD & FAIRLANE)

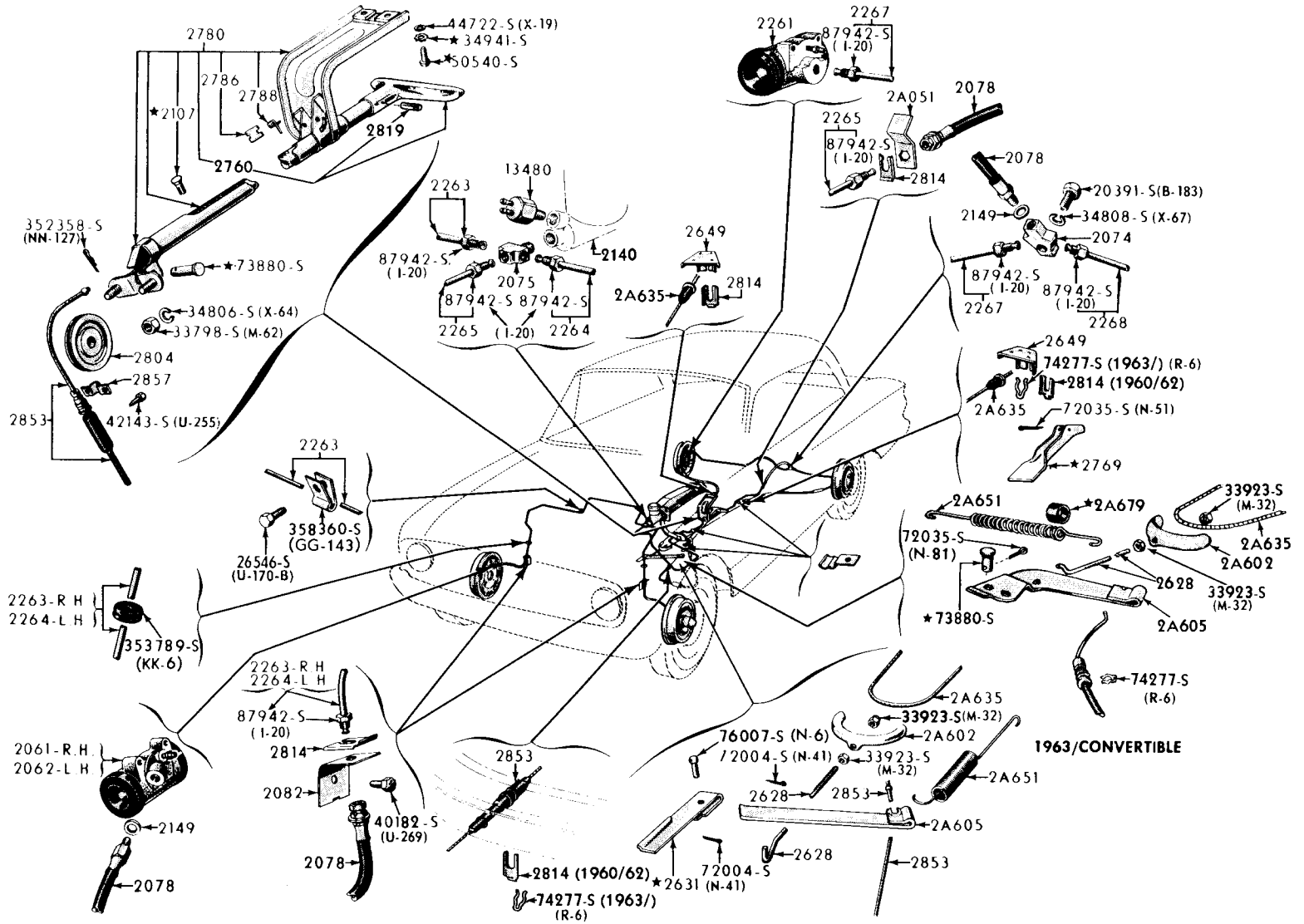


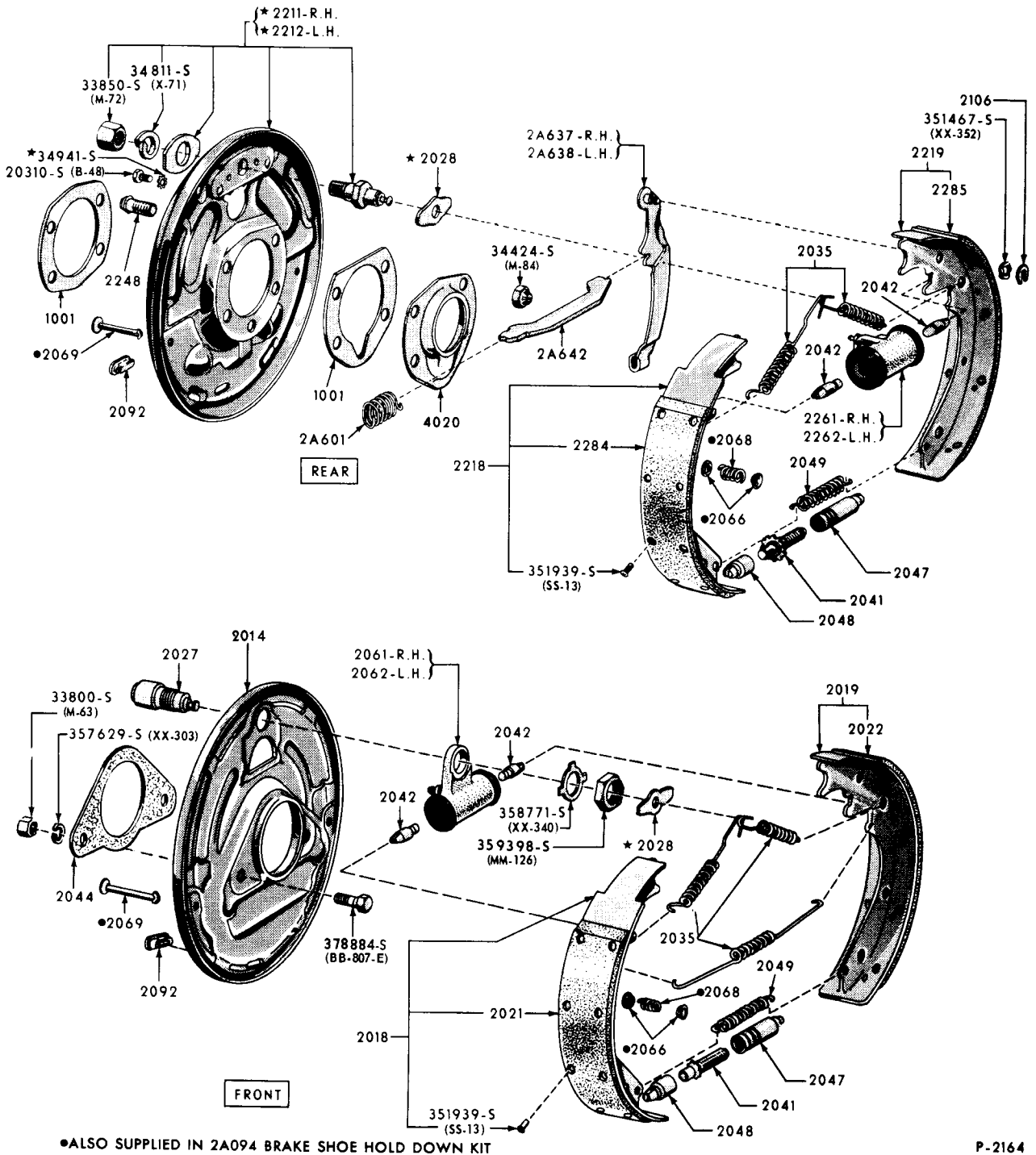
1960/64 BRAKE SYSTEM (FORD)

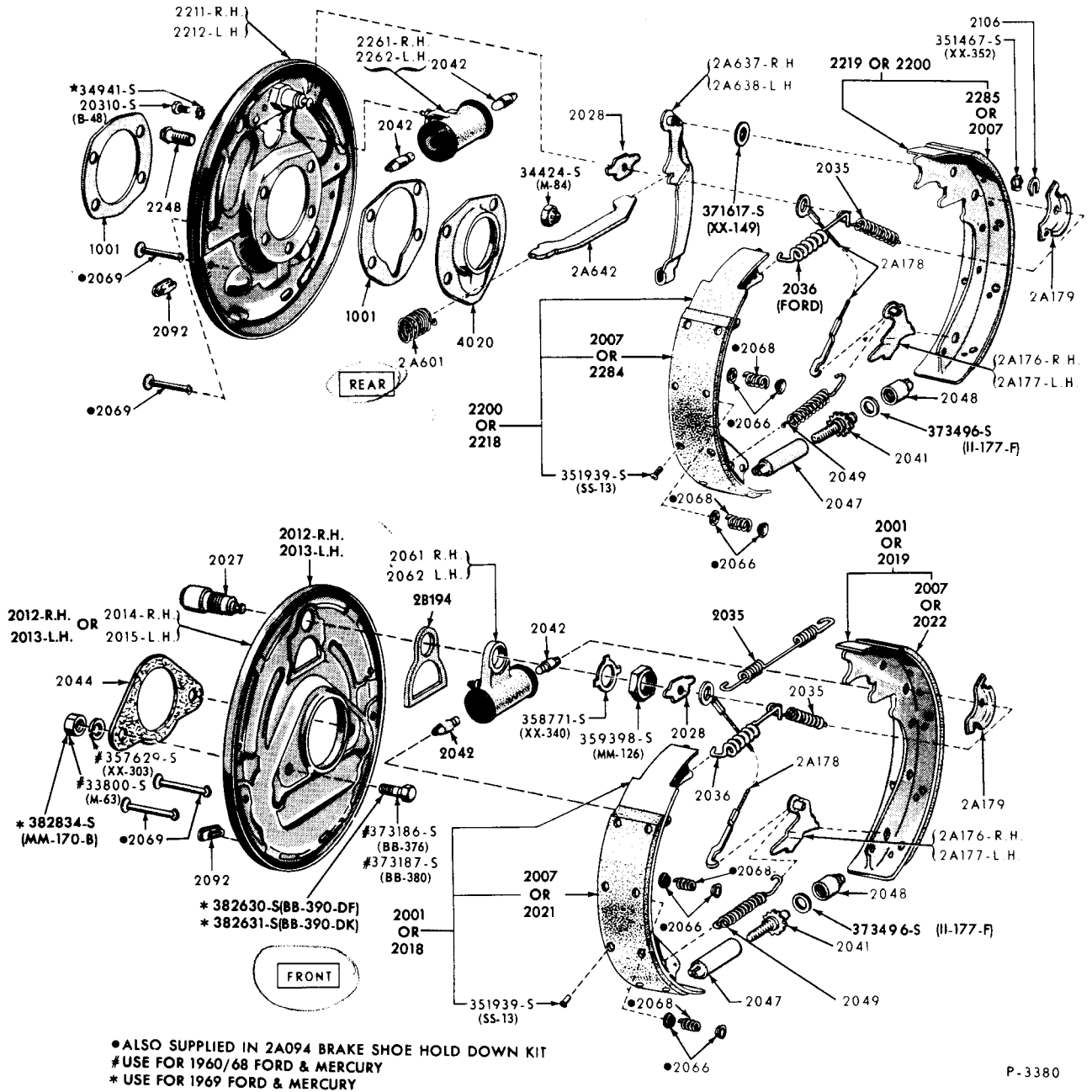




1960/
BRAKE SYSTEM (FALCON)

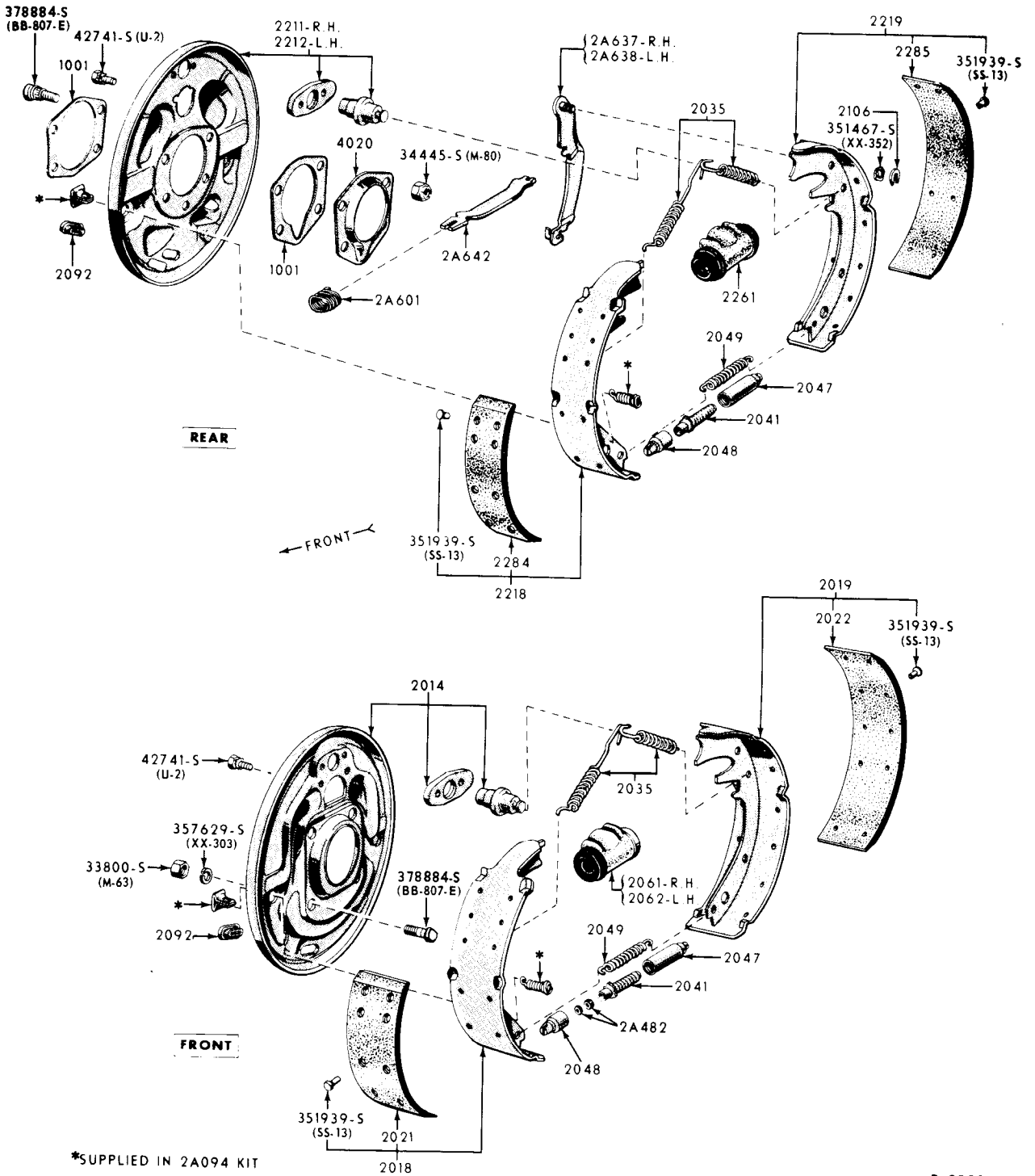


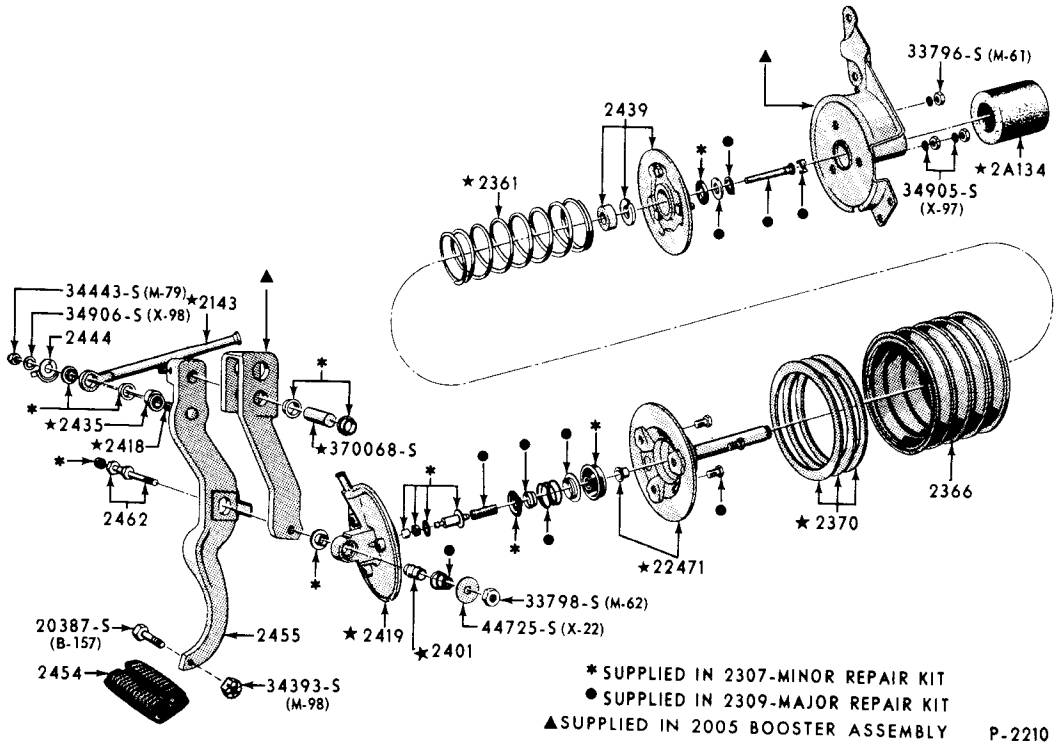




P-3380

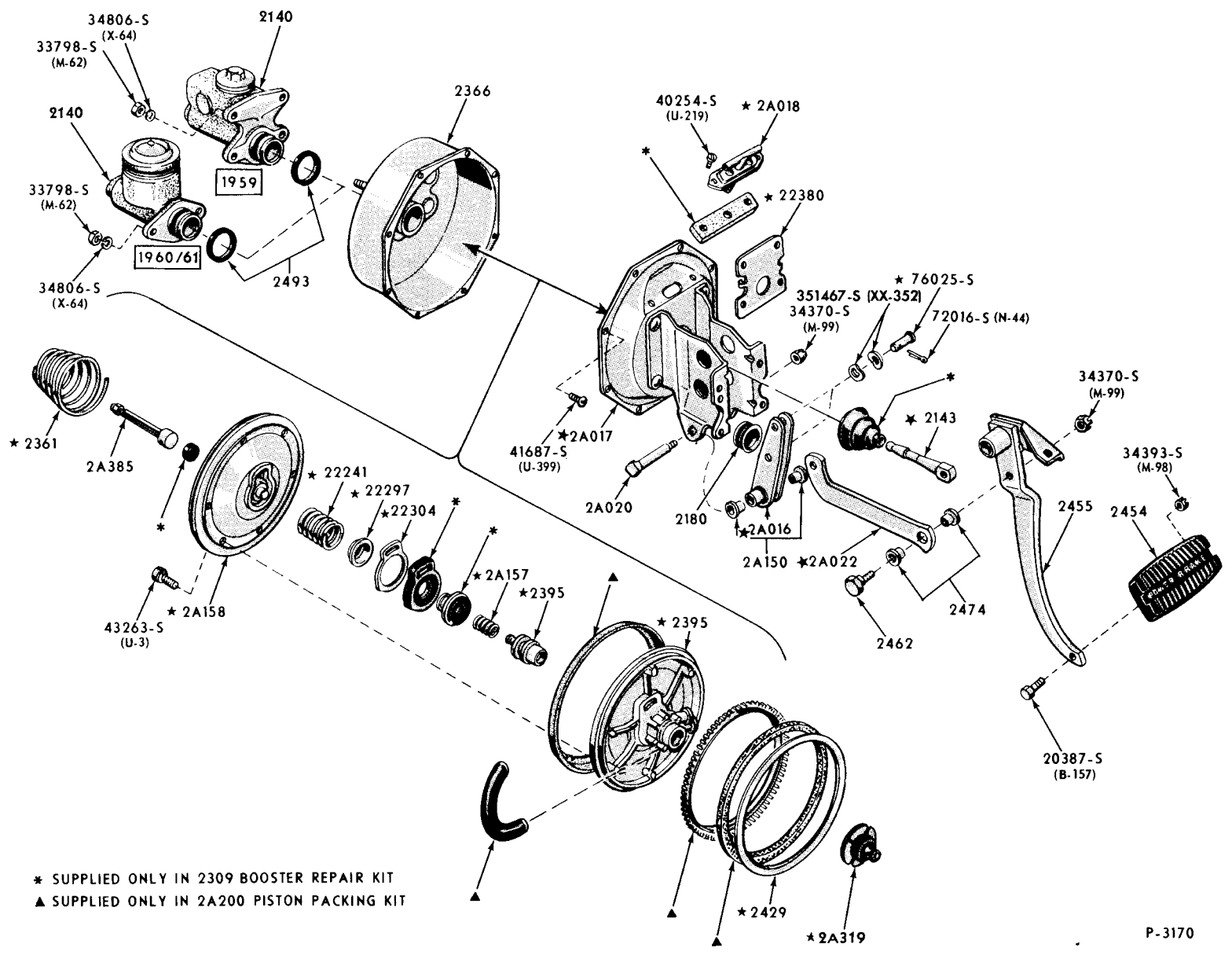
**FRONT & REAR DRUM BRAKES (SELF ADJUSTING)-TYPICAL
1961/ FORD & THUNDERBIRD**



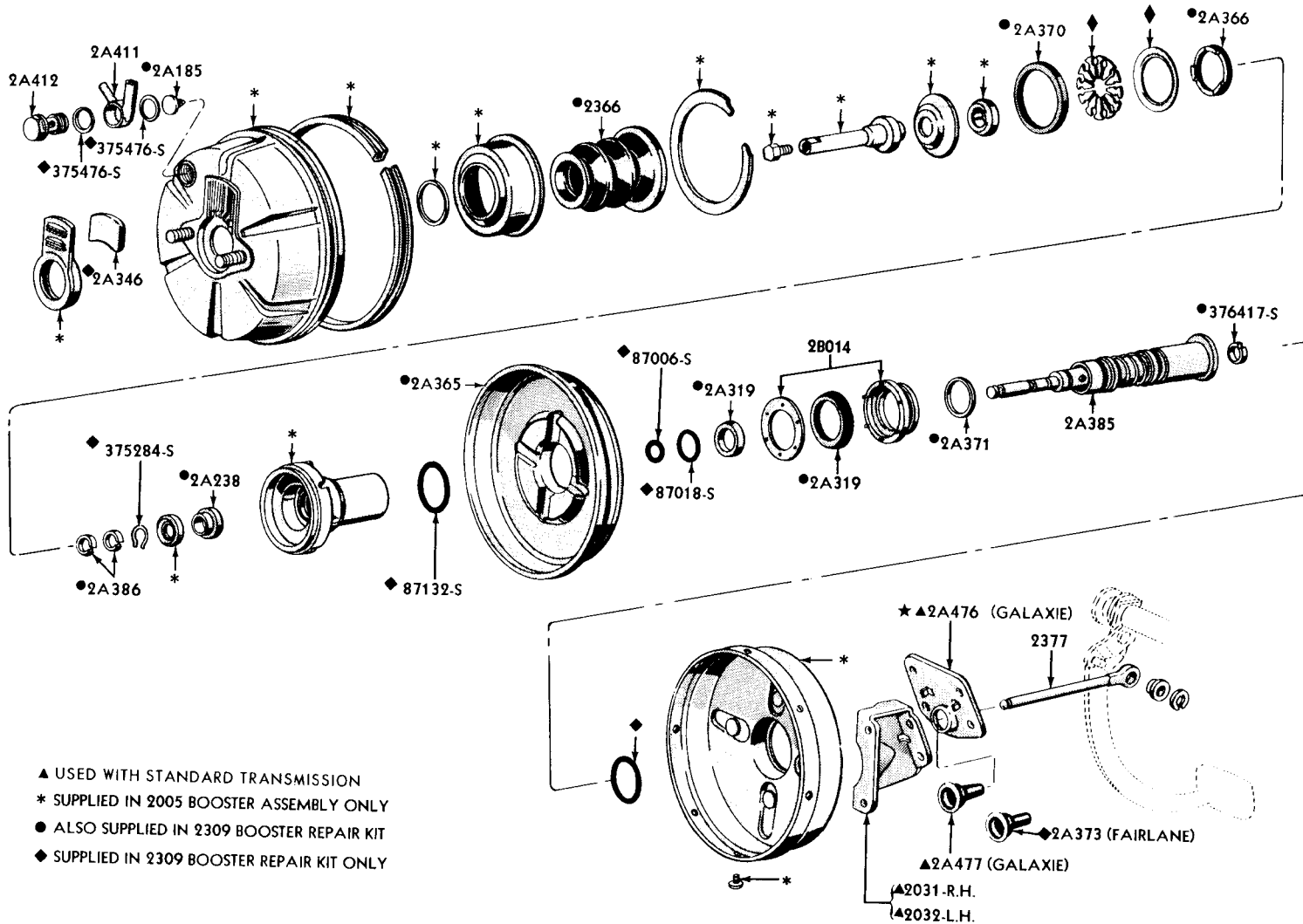


P-2210

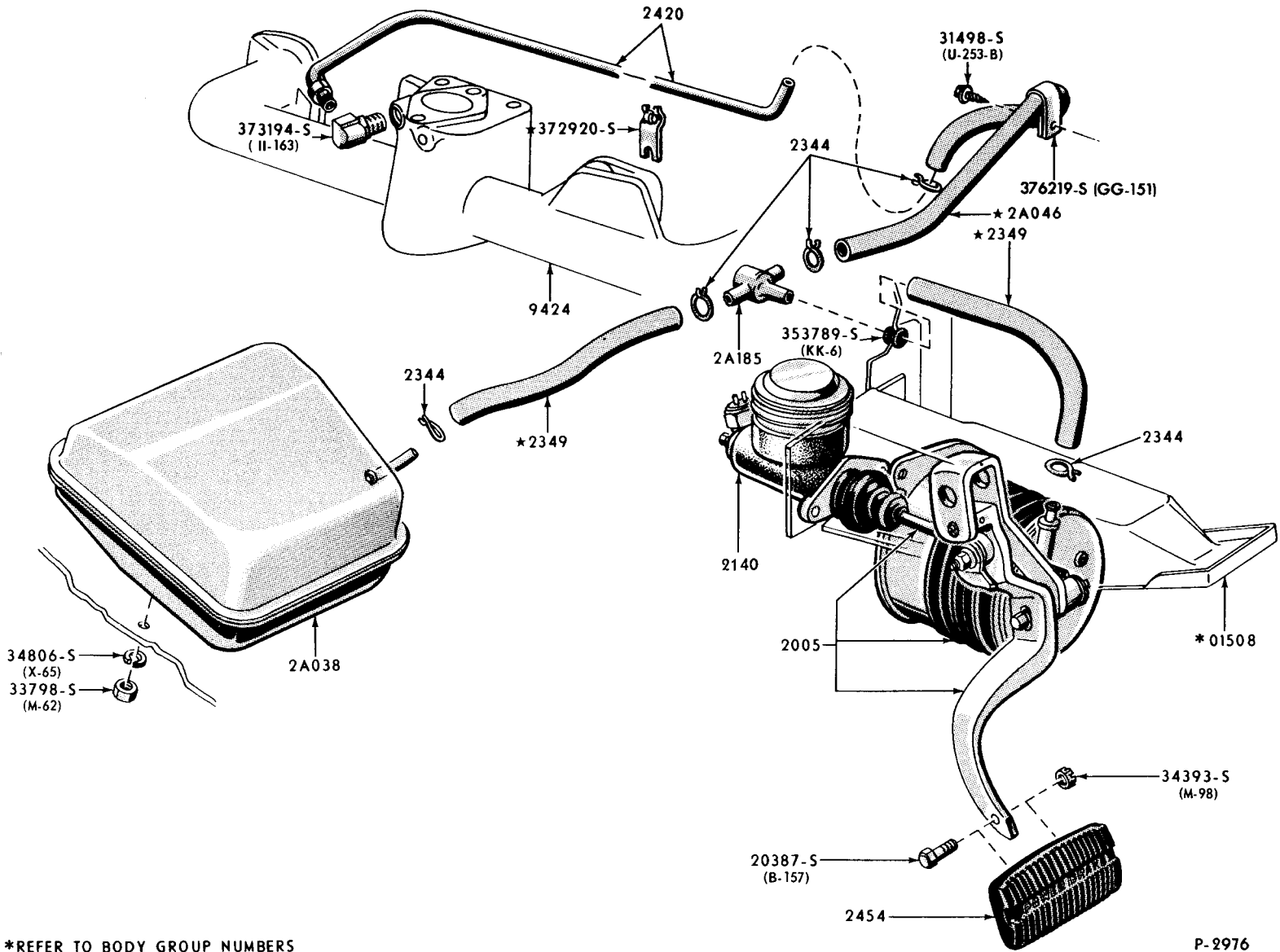
1960 POWER BRAKE BOOSTER (FORD-6 CYLINDER)



* SUPPLIED ONLY IN 2309 BOOSTER REPAIR KIT
 ▲ SUPPLIED ONLY IN 2A200 PISTON PACKING KIT

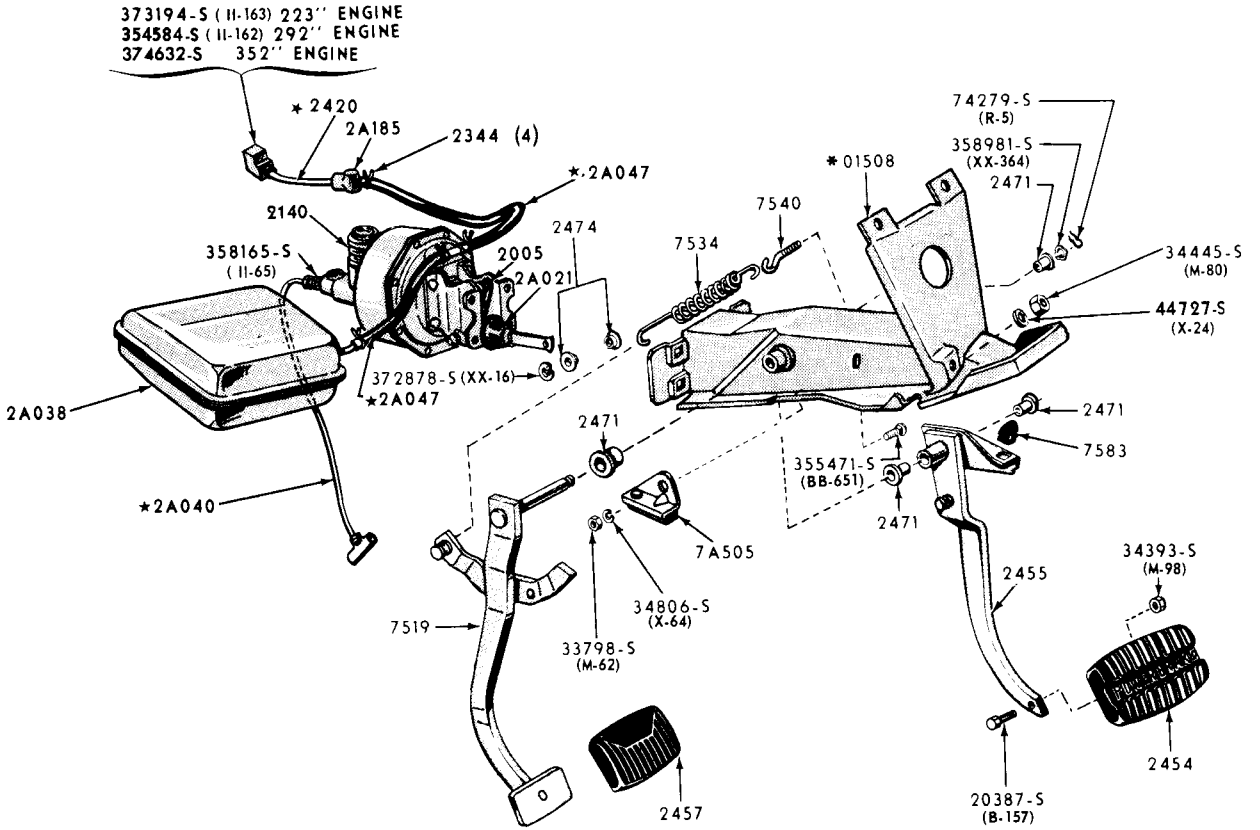


- ▲ USED WITH STANDARD TRANSMISSION
- * SUPPLIED IN 2005 BOOSTER ASSEMBLY ONLY
- ALSO SUPPLIED IN 2309 BOOSTER REPAIR KIT
- ◆ SUPPLIED IN 2309 BOOSTER REPAIR KIT ONLY



*REFER TO BODY GROUP NUMBERS

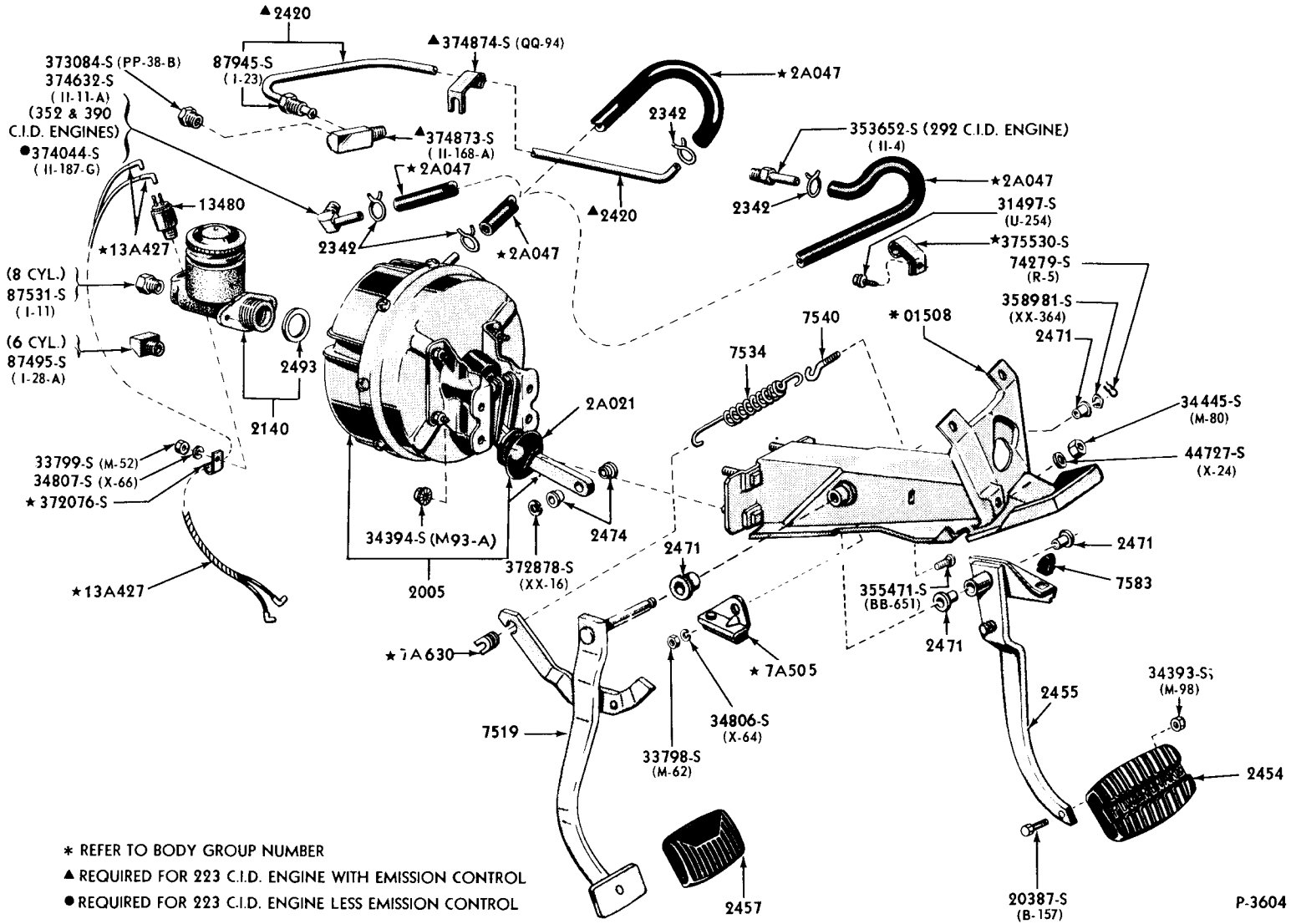
P-2976



* REFER TO BODY GROUP NUMBER

P-3134

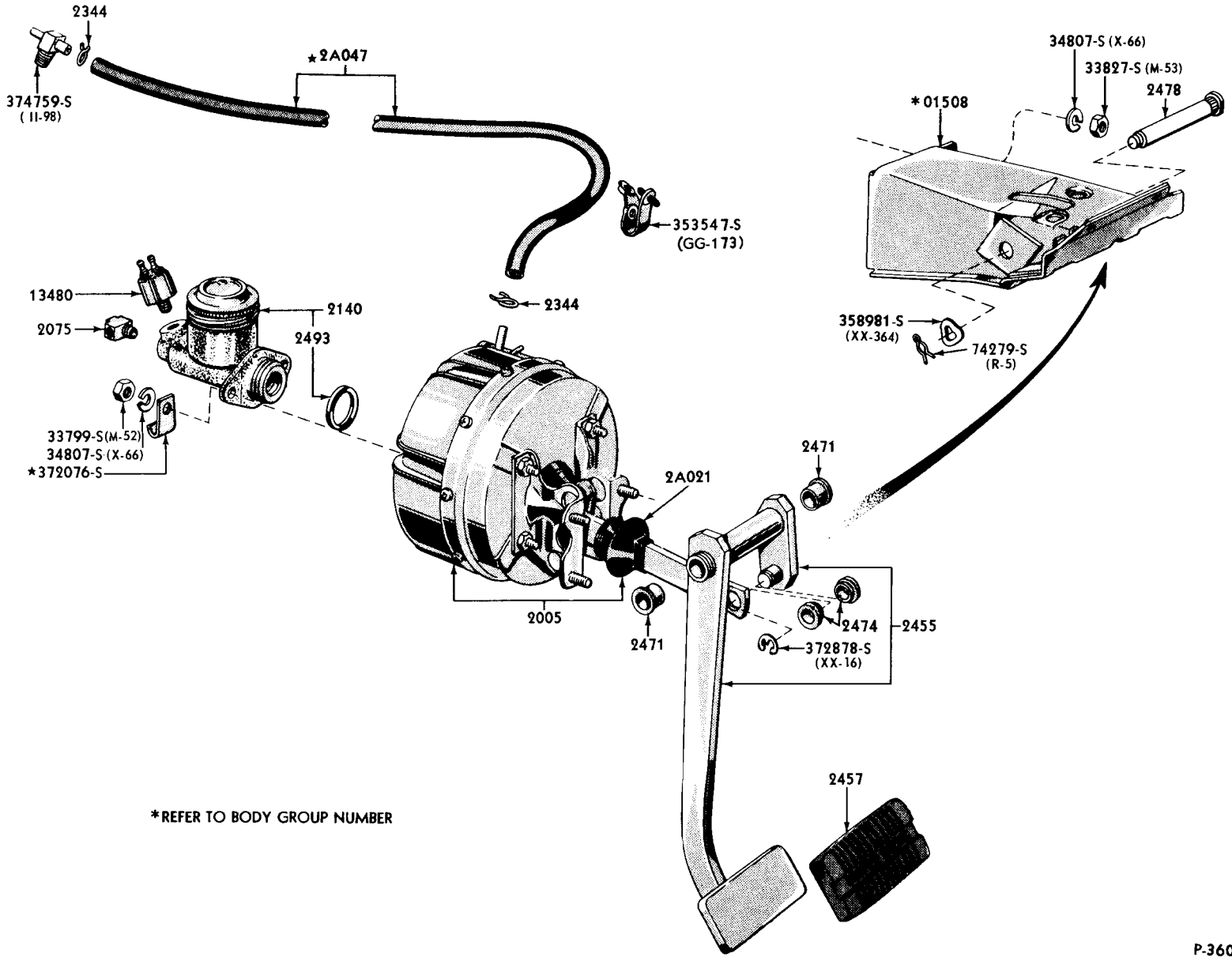
1960 POWER BRAKE BOOSTER INSTALLATION (FORD-8 CYLINDER)



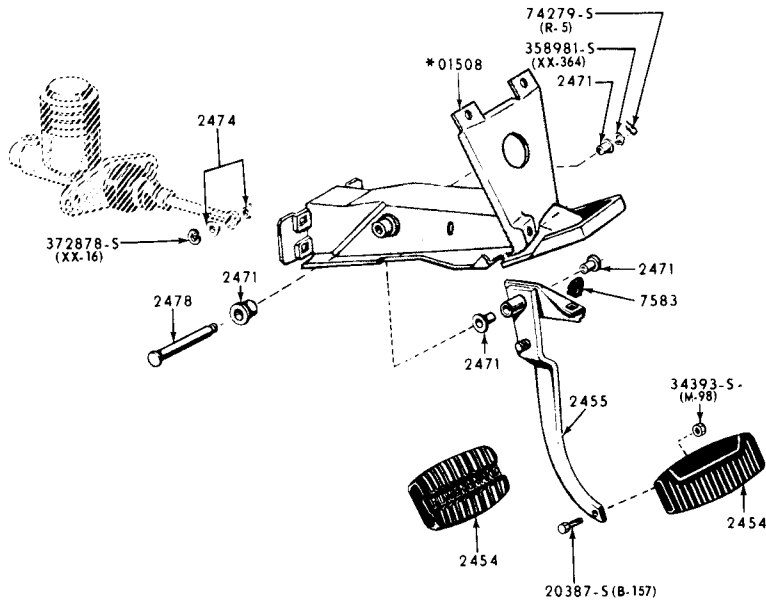
* REFER TO BODY GROUP NUMBER

▲ REQUIRED FOR 223 C.I.D. ENGINE WITH EMISSION CONTROL

● REQUIRED FOR 223 C.I.D. ENGINE LESS EMISSION CONTROL



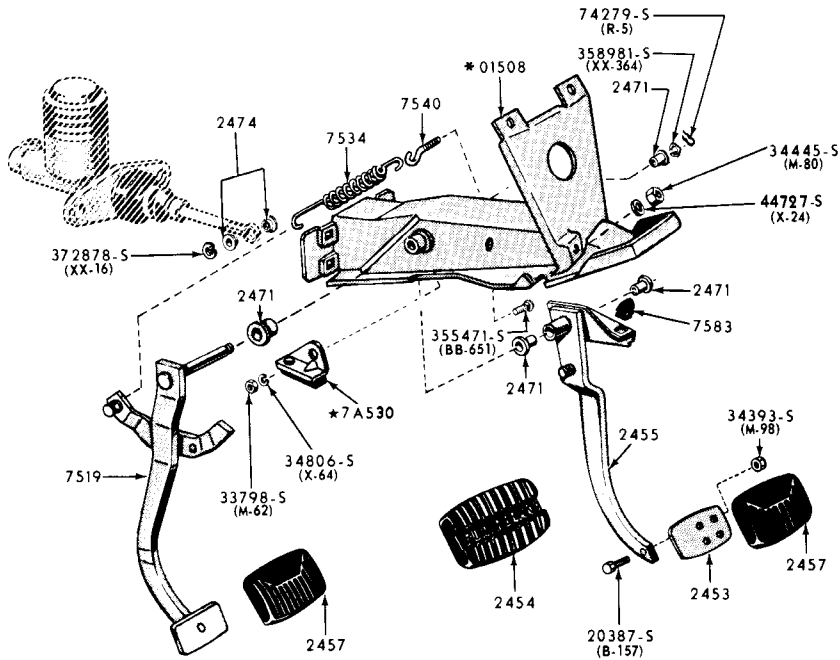
*REFER TO BODY GROUP NUMBER



* REFER TO BODY GROUP NUMBER

P-2973

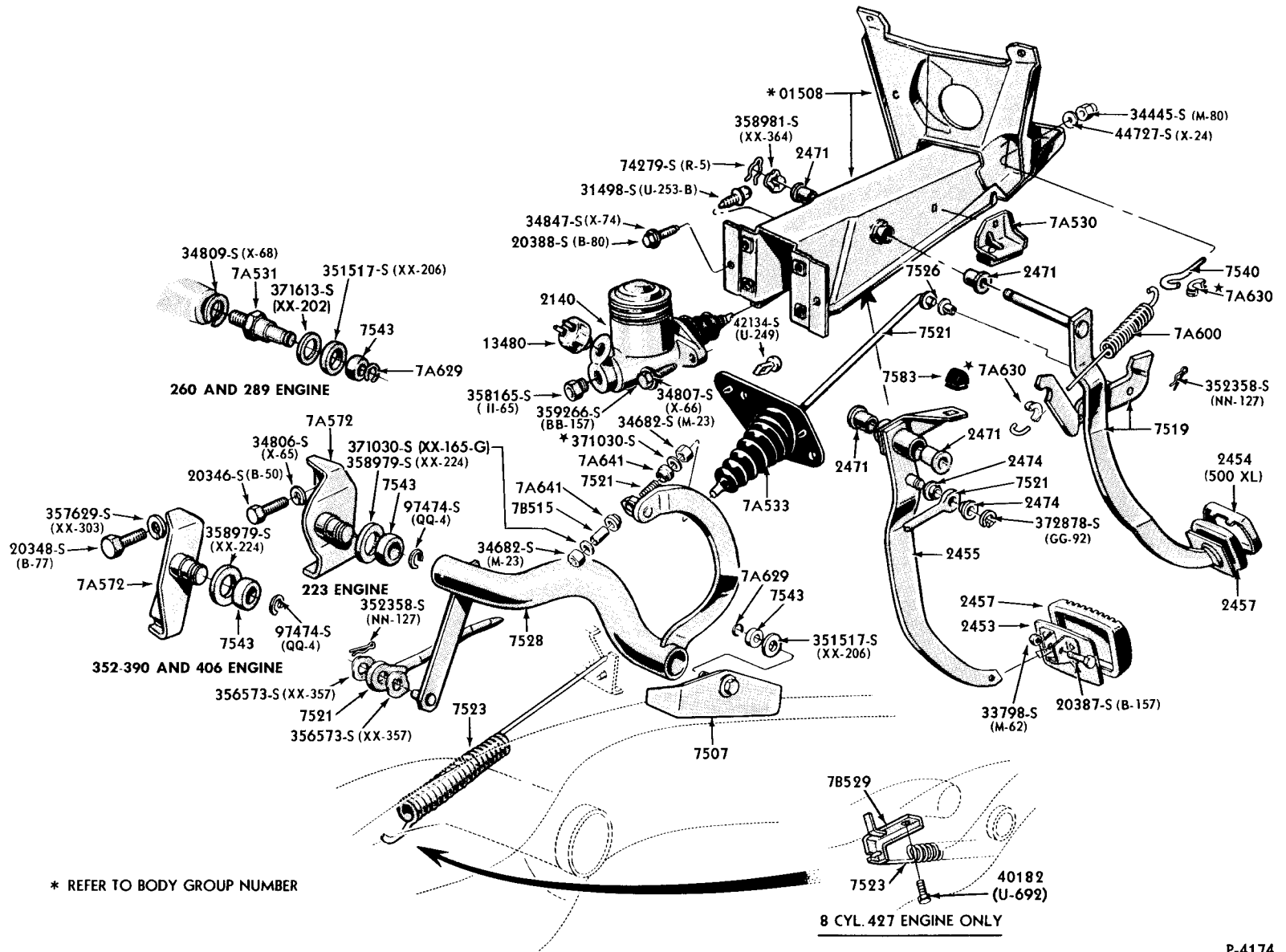
1960 BRAKE PEDAL & RELATED PARTS (FORDOMATIC)(FORD)



* REFER TO BODY GROUP NUMBER

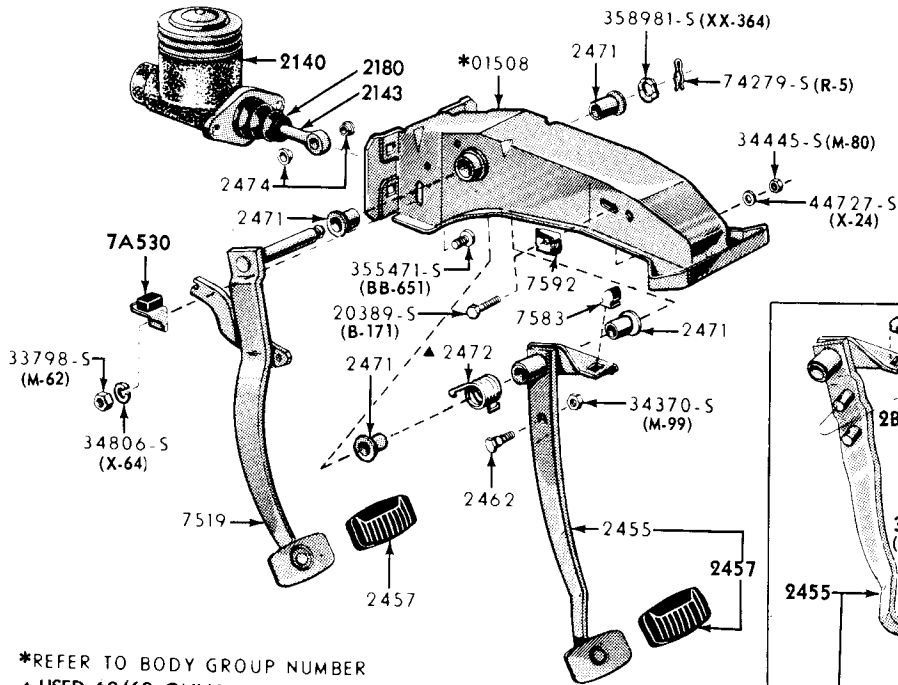
P-2972

1960 BRAKE & CLUTCH PEDALS & RELATED PARTS (MANUAL GEAR SHIFT) (FORD)

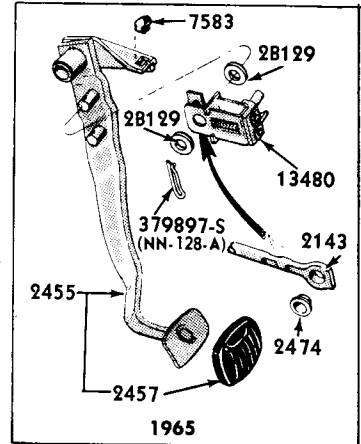


* REFER TO BODY GROUP NUMBER

8 CYL. 427 ENGINE ONLY

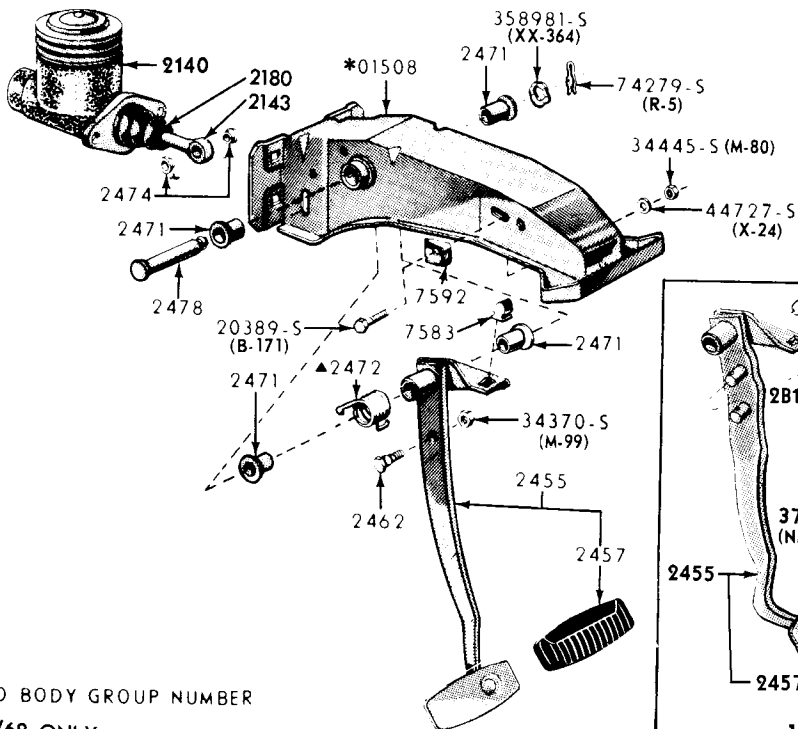


*REFER TO BODY GROUP NUMBER
▲ USED 60/62 ONLY

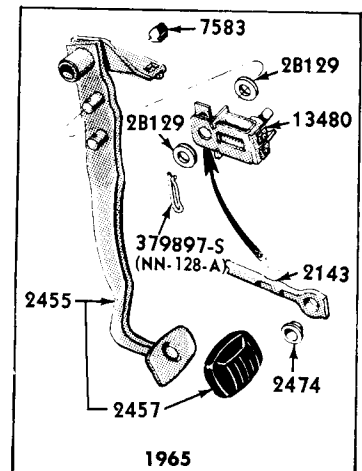


P-3130

1960/ BRAKE & CLUTCH PEDALS & RELATED PARTS (MANUAL GEAR SHIFT) (FALCON)



*REFER TO BODY GROUP NUMBER
▲ USED 60/62 ONLY



P-3131

1960/ BRAKE PEDAL & RELATED PARTS (FORDOMATIC) (FALCON)